



Colchester Operatic Society presents

An Amateur production by arrangement with  
The Really Useful Group Ltd

**Jesus Christ**  
**Superstar**

by Tim Rice and Andrew Lloyd Webber

The Mercury Theatre    12th - 22nd October 2011



# Saturday Morning Theatre Schools

Little Stars – ages 4–7

Juniors – ages 8–12

Seniors – ages 13–16

Theatricool is a fun and friendly performing arts school with the emphasis on **excellent training** whilst having **lots of fun**.

Lead Staff are all fully qualified to degree level, fully insured and CRB checked.

Performing Arts training, focussing on **DRAMA, SINGING and DANCE**

## FREE TASTER SESSION! BOOK NOW

CALL Sally Fisher (Principal) 07736713909

Our friendly, encouraging tutors have many years of experience as professional musicians and music teachers.

100% of our exam students have passed an exam with distinction in the past year.

All ages and abilities welcome.

**Singing Lessons**  
**Music Theatre**

**Guitar**  
**Bass**

**Drums**  
**Theory**

## ACADEMY 121

### One-to-one Music Tuition

Email: [lessons@academy121.com](mailto:lessons@academy121.com)

or call Laura: 079444 85103



for more information please visit  
[www.academy121.com](http://www.academy121.com)



**AN AMATEUR PRODUCTION  
PRESENTED BY ARRANGEMENT WITH THE  
REALLY USEFUL GROUP LTD  
COLCHESTER OPERATIC SOCIETY**

**Affiliated to the National Operatic and Dramatic Association**

**PROUDLY PRESENTS**

**Jesus Christ  
Superstar**

**A Rock Opera**

**By Tim Rice and Andrew Lloyd Webber**



**NODA, the National Operatic and dramatic Association, founded in 1899, is the main representative body for Amateur Theatre in the UK. It has a membership of some 2400 amateur/community theatre groups and 300 individual enthusiasts throughout the UK.**

**OUR SOCIETY IS PROUD TO BE AFFILIATED TO NODA**

*Please note that the videoing, photography or sound recording of any part of this performance is not permitted. Please turn off all mobile phones and any other devices.*



**Jesus Christ  
Superstar**

## A MESSAGE from OUR CHAIRMAN

May I extend a very warm welcome to you all and trust that you will enjoy Colchester Operatic Society's production of Tim Rice and Andrew Lloyd Webbers' Rock Opera,

### Jesus Christ Superstar

The Society is very proud to have this opportunity to perform a show rarely made available to Amateur Musical Societies. The rights holders of JCS, The Really Useful Group Ltd, offered us the chance to present this show on the condition that we performed in 2011 – we jumped at the chance and have happily adapted our traditional show dates – COS now performing in October and CO2 taking to the stage in late January.

JCS has really challenged the cast and, once again, our Director Dani Fincham has really excelled in managing to get the best out of everyone. Musical Director, Neil Somerville, has taught the performers Andrew Lloyd Webber's diverse score. We're confident that you'll be in for an exceptional and moving evening.

This show is really a total 'Operatic Society' show, with 16 year olds and over from CO2 relishing the opportunity to join in with this fabulous production. In my memory this is the largest cast we have ever had for any show and therefore most playing members we have ever had on the Mercury stage.

In January 2012 our youth society, CO2, is producing, at the Mercury Theatre, the ever popular Oklahoma. It really is another MUST for your diary. We're keeping your need for top quality musical entertainment fulfilled throughout the summer as we celebrate the Diamond Jubilee of HRH Queen Elizabeth. After two indoor performances on the 6th and 7th June 2012 at Kingsland Church, this concert culminates in an open air performance at Castle House, Dedham, on Saturday the 9th June. Those of you who attended our last open air production at this venue know what a super evening it was –make sure you get your tickets early and get the picnic packed, and wine chilled!

My last bit of news is that COS will be producing the unmissable Sweet Charity at this theatre in Jan/Feb 2013.

We're a welcoming bunch here at COS, which is why we'd like to draw your attention to the article in the programme advertising the virtues of Society membership. I really would like to welcome you to join us for next year's show.

This is the end of my chat so sit back in your seat, relax and let the story of the last seven days of the life of Jesus Christ, from his arrival in Jerusalem to his crucifixion, unfold.

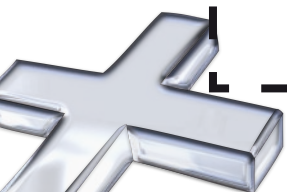
Thank you all for your continued support, it's always very much appreciated.

Michael Spurgeon  
Chairman COS



#### DATES for YOUR NEXT YEAR'S DIARY

CO2	OKLAHOMA	Mercury Theatre	Thurs 26 <sup>th</sup> Jan – Sat 4 <sup>th</sup> Feb
COS + CO2	Concert	Kingsland Church	Wed 6 <sup>th</sup> , Thurs 7 <sup>th</sup> June
COS + CO2	Concert	Castle House Dedham	Sat 9 <sup>th</sup> June
Open Air			



Jesus Christ  
**Superstar**



## THE PRODUCTION TEAM



### **DIRECTOR/CHOREOGRAPHER – Dani Fincham**

The association between Dani and Colchester Operatic Society goes back to 1984 when Dani played Miss Lynch in the very first CO2 show – Grease. That experience gave Dani the taste for musical theatre and there has been very little time over the last 27 years when she has not been involved in some capacity. She cut her directorial teeth at Braintree in 1995 with Annie and has since gone on to direct numerous shows. JCS is Dani's fourth consecutive show for COS and she has also been a regular director for CO2.

### **MUSICAL DIRECTOR – Neil Somerville**

It's not only whisky that's exported from Scotland! Talented musicians and voice coaches also find their way South. Neil's professional expertise as a voice coach was instrumental with the COS cast successfully overcoming the musical challenges of Sondheim's classic, Sweeney Todd, earlier this year. This experience held him in good stead as he has helped the Society master the difficulties of Webber & Rice. One positive for the cast is that after three years with Neil they can now 'translate' his Scottish accent!

**LIGHTING DESIGN**  
**Jim Bowman**

**SOUND DESIGN**  
**Martin J Hunt**

**WARDROBE MANAGER**  
**Beryl Balls**

**PROPERTIES MANAGERS**  
**Maggie Walton, Ann Taylor**

**FRONT OF HOUSE**  
**Liz Thorne**

**PUBLICITY MANAGER**  
**Caroline Fritz**

**PROGRAMME**  
**Emma Ward & Norman Ryan**

**COVER ARTWORK**  
**Jo Woolf**



### **JESUS – Tom Stapleton**

This is Tom's debut for COS and first Mercury Theatre appearance. Tom's background as a professional singer means that he is well versed in performing, but this is his first 'Rock' opera and in fact his first stage appearance since the birth of son Oscar in 2009. Since graduating from Colchester Institute in 2002, Tom has performed throughout the UK and has recorded a variety of music, ranging from Classical Opera to film scores, as well as teaching singing. Tom is excited about playing the part of Jesus and acknowledges that it'll be tough to top his 'son of God' role in future!

### **Judas – Shane King**

JCS marks Shane's second outing with COS, following on from his debut as love-struck suitor Antony, in Sweeney Todd. Shane was first introduced to musical theatre when he joined CO2 in 2004. Since then he has appeared in over 40 shows and concerts across East Anglia, playing lead roles in Les Miserables, West Side Story, We Will Rock You, Footloose and The Full Monty. He has now, very successfully, finished his University education and is about to embark on a career as a chartered accountant.



### **Mary Magdalen – Leanne Fincham**

Husband Mark was absent last year, playing Sweeney Todd! That meant that 2011 would be Leanne's year! Having trained as a dancer, Leanne has performed extensively and is trained in a wide range of dance disciplines. Leanne has played numerous roles in amateur productions, but more recently she has been assistant director and choreographer for both COS and CO2. Very pleased to be returning to the stage, she's also very happy that daughters Olivia and Grace will be able to see 'Mummy' on stage!

### **PONTIUS PILATE – John Davies**

John is a stalwart of the Society who first started performing, aged 17, in a G & S production in North London. Since moving to Colchester, John has played many leading roles for COS, including Curly in Oklahoma, Emile de Becque in South Pacific and Tevye in Fiddler – growing a wonderful beard for that part. His first leading role for COS was as Bill Sykes in the 1987 production of Oliver. He describes Pilate as a 'jewel of a part' and hopes that his three grandchildren do not think that he really is a nasty person when they come and watch!



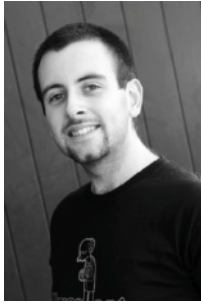
### **SIMON ZEALOTES - David Rutter**

David brings a wealth of experience to his first appearance with COS. He originally trained and qualified as an actor but his career has now developed into him becoming Head of Drama at a local school. David has performed as the lead in many shows for Braintree Musical Society, notably Kipps in Half a Sixpence and Mr Hackle in Hello Dolly. Billy Elliot and Wizard of Oz are among his directorial credits at Braintree and his school.



### **Caiaphas - Rikki Hammond**

Six years ago Rikki was dragged along by a friend to a COS rehearsal. He didn't really think that this was anything to interest him. Six years later Rikki will tell anyone who will listen that it was the best thing he ever did! Over the period he has learnt music, voice and theatre skills he never thought he had and is now an integral part of the Society, proven by the consistent increase in his stage roles. Rikki played Fogg in Sweeney and has now readily adapted to the different demands of his present role.



### **Annas - Ben Adams**

Ben started his theatrical experience as an eight year old in a village production. Armed with several years experience in village hall productions, Ben then moved on to the challenges of musical theatre. His first 'taster' was for Brightlingsea Operatic Society. Performances in Oklahoma, Guys & Dolls, and High Society for Clacton Musical Theatre Group led him to COS. This is his second show with us, after debuting as Beadle Bamford in Sweeney Todd earlier in the year. His one negative is that Saturday matinees mean that he misses watching his beloved Ipswich Town F.C. for two weeks.



### **PETER - Nathan Crame**

Nathan is a relatively late convert to the musical theatre stage. His first appearance was nine years ago with Staines Operatic Society. A year later he moved to Colchester and played nasty Noah Claypole in Oliver. He courted Eliza as the hopeless Freddy Eynsford-Hill in My Fair Lady, played a hero Lt Buzz Adams in South Pacific and fell in love and married one of Tevye's daughters in Fiddler. He has helped organise several fund raising concerts for the Society and is thrilled to be back on the Mercury stage in his first 'Rock' opera.



### **HEROD - Jonathan Davis**

Jonathan studied theatre but opted for a career away from the professional stage, using his training as a hobby 'investment'. A move to Chelmsford 15 years ago ended Jonathan's run of five performances for COS at the Mercury theatre. Colchester's loss was Chelmsford's gain as Jonathan has gone on to clock up nearly 30 shows in Chelmsford. The opportunity to appear in JCS has tempted Jonathan back along the A12 with the added bonus that, by introducing his wife to COS, not only does he have the delight of performing on stage with 'the missus', the journey gives them some quality talking time.



Jesus Christ  
**Superstar**



# CAST



**JESUS**

**JUDAS**

**MARY**

**PILATE**

**CAIAPHAS**

**ANNAS**

**SIMON**

**PETER**

**HEROD**



## **PRIESTS**

JOHN ENFIELD

JASON NORTON

SAM PILKINGTON

## **APOSTLES**

RICHARD BLAND

STEVEN CHAN

FRED LODGE

ED MEHAN



## **ANGELS**

CAROLINE FRITZ

GABRIELLA FUSI

LEANNE HOWARD

DAWN KING

SALLY LEUNG

BARBARA RYAN

BARBARA SCULLY

EMMA SPURGEON

## **ENSEMBLE**

David Ayton, Kate Bagley, Sophie Baines, Richard Bland, Charlotte Butcher, Viv Cassidy, Val Cavanagh-White, Steven Chan, Emma Dagleish-Mehen, Joanne Davis, Clare Edwards, John Enfield, Diane Emberton, Kieran Foreman, Caroline Fritz, Gabriella Fusi, Justine Garnes, Leanne Howard, Claire Jones, Dawn King,





# LIST

**TOM STAPLETON**

**SHANE KING**

**LEANNE FINCHAM**

**JOHN DAVIES**

**RIKKI HAMMOND**

**BEN ADAMS**

**DAVID RUTTER**

**NATHAN CRAME**

**JONATHAN DAVIS**



## **HEROD'S GIRLS**

KATE BAGLEY

JOANNE DAVIS

JUSTINE GARNES

EMMA SPURGEON

LAURA WYATT

CHARLOTTE BUTCHER

GABRIELLA FUSI

SARAH LLOYD

RACHEL WOOD



## **SOUL GIRLS**

SARAH WILLINGHAM

LISA PORDHAM

SUE LISSIMORE

JUSTINE GARNES

RACHEL WOOD

LAURA WYATT



## **GOSPEL DIVA**

RACHEL WOOD

Sally Leung, Sarah Lloyd, Fred Lodge, Sue Lissimore, Ed Mehen, Jason Norton, Sam Pilkington, Lisa Pordham, Pat Prestney, Barbara Ryan, Barbara Scully, Simone Smith, Emma Spurgeon, Sarah Stevenson, Colin Thorne, Juliet Turner, Emma Ward, Teresa White, Sarah Willingham, Michael Wiseman, Rachel Wood, Laura Wyatt

## SHOW SYNOPSIS

This 1970s musical is set in the last week of Jesus' life.

Jerusalem has been conquered and subject to Roman rule for over 60 years but the local indigenous Priests had established a fragile peace with the ruling Romans and the Jewish populace were allowed to worship in freedom.

Jesus approaches Jerusalem after three years of building a reputation as a healer, teacher and preacher. He arrives with a large following. The crowds are ready to lift him to 'superstar' status hoping that he will lead them against the occupying Romans - but is this really his agenda?

Judas, a follower and chosen disciple, bursts on to the scene, taking centre stage. He is a man in torment. Is Jesus a superstar or charlatan, healer, teacher and preacher or a threat to the established order? Is he the revolutionary that everyone seems to expect or a failure? Judas' eventual decision is that Jesus is not the expected Messiah but someone who has allowed himself to be carried away, and carried along, with the expectations of the crowd.

The priests are threatened by Jesus' arrival, their authority with the people challenged and the delicate functional relationship with the Roman occupiers disturbed by this man who can stir up people in the way that he manages. Working with Judas and using the inner conflicts that disturb him, they persuade Judas that the death of Jesus is for the greater good.

Only Mary, despite her profession, seems to understand Jesus, reaching the man rather than the superstar, soothing him, calming him but even she does not 'know how to love him' – this enigmatic figure who continues to challenge everyone's understanding.

Jesus, overwhelmed by the demands made upon him, retreats to the Garden of Gethsemane to be with his disciples for what he knows will be the Last Supper. After having been advised by Judas that Jesus will be found, away from the adoring crowds, the Priests arrange to arrest Jesus. As Jesus predicts at the supper one of his trusted disciples denies him and one betrays him and the others desert him through fear for their own positions. As Jesus is brought to trial neither the Roman leader, Pilate, nor the Jewish puppet-king, Herod can understand what Jesus is about. He will not answer the one, nor perform for the other. The crowds have turned against him, the disciples deserted him. Pilate, urged on by the priests and the crowd, sees that, despite his own misgivings, the only solution to keeping the status quo and the local population under control is to order the death penalty – a punishment that only the Roman governor can enact.

Judas, destroyed by what he has done, takes his own life. Jesus has struggled with his own destiny but finally commits himself to what he believes God is asking of him and willingly surrenders his life on the cross – leaving us with the question

**'Jesus Christ who are you?  
What have you sacrificed?'**



## ACT 1

- |   |  |
|---|--|
| 1. Overture                                   | The Orchestra                              |
| 2. Heaven on their Minds                      | Judas                                      |
| 3. What's the Buzz/ Strange Things Mystifying | Apostles, Jesus, Mary, Judas ,Peter, Woman |
| 4. Everything's Alright                       | Mary, Woman, Judas, Jesus, Apostles        |
| 5. This Jesus Must Die                        | Annas, Caiaphas, Apostles, Priests         |
| 6. Hosanna                                    | Apostles, Caiaphas, Jesus, Ensemble        |
| 7. Simon Zealotes/ Poor Jerusalem             | Apostles, Simon, Jesus, Ensemble           |
| 8. Pilates Dream                              | Pilate                                     |
| 9. The Temple                                 | Ensemble, Jesus                            |
| 10. Everything's Alright (reprise)            | Mary, Jesus                                |
| 11. I Don't Know How to Love Him              | Mary                                       |
| 12. Damned for All Time/ Blood Money          | Judas, Annas, Caiaphas, Chorus             |

## ACT 2

- |  |  |
|--|--|
| 1. The Last Supper                           | Apostles, Jesus, Judas                                   |
| 2. Gethsemane ( I Only Want to Say)          | Jesus  |
| 3. The Arrest                                | Judas, Jesus, Peter, Apostles, Ensemble, Annas, Caiaphas |
| 4. Peter's Denial                            | Old Maid, Peter, Soldier, Old Man, Mary                  |
| 5. Pilate and Christ                         | Pilate, Annas, Jesus, Ensemble                           |
| 6. King Herod's Song                         | Herod, Dancers   |
| 7. Could We Start Again Please               | Mary, Apostles, Peter                                    |
| 8. Judas' Death                              | Judas, Annas, Caiaphas, Chorus                           |
| 9. Trial Before Pilate (including 39 lashes) | Pilate, Caiaphas, Annas, Jesus, Ensemble                 |
| 10. Superstar                                | Judas, Soul Girls, Angels                                |
| 11. The Crucifixion                          | Jesus, Ensemble  |
| 12. John Nineteen: Forty- One                | The Orchestra  |



# Dancewear Specialists — BODY & SOLE —

- Pointe Shoe Fitting by Appointment
- Freestyle and Fitness Wear
- Dancewear and Shoes
- Gifts
- Ballroom Shoes
- Skating Wear
- Children's Fancy dress hire

**tel: 01206 564606**

**43 St. John's Street, Colchester, Essex CO2 7AD**

**[www.bodynsole.co.uk](http://www.bodynsole.co.uk)**

## HISTORY of JESUS CHRIST SUPERSTAR

Jesus Christ Superstar was the first musical by Andrew Lloyd Webber and Tim Rice to be produced for the professional stage. The show opened on the 12 October 1971 at the Mark Hellinger Theatre New York with the London production opening on the 9th August 1972 with Paul Nicholas (Jesus) Stephen Tate (Judas) and Diana Gillespie (Mary Magdalene) By the time it closed, after eight years and 3,358 performances, it had become the longest running musical in West End history. That accolade has been subsequently surpassed but it still retains the spot as the 5th longest running musical in the West End. JCS is regularly produced around the world.

Webber and Rice (the lyricist) are both British born. Their first collaboration was on Joseph and his Amazing Technicolour Dreamcoat which was written and produced for students. Flushed with this first success the duo's next endeavour was JCS. They could not find a sponsor for a full production so, showing remarkable foresight for that period, they recorded one song - Judas's 'Superstar' which became a hit single. The financial return from this one song enabled them to invest in recording a two record album which also became a best seller. Underwritten by these financial returns and with demand waiting for them, they were then able to stage the rock opera to sell-out crowds and enthusiastic critics.

The pair went on to produce further hits together, namely Evita in 1978, but the desire for different paths means that they now no longer collaborate but their efforts together have left a lasting legacy to musical theatre. They have both been knighted for their services to the Arts.

JCS has also spawned three film versions -1973, 2000 and 2010. Another film is planned for 2014 which further illustrates the continual, timeless appeal of the music and show.

### Past Productions

1925 GONDOLIER	1951 THE STUDENT PRINCE	1971 DIE FLEDERMAUS	1991 FIDDLER ON THE ROOF
1926 MIKADO	1952 HARMONY HILL	1972 MIKADO	1992 OKLAHOMA
1927 PRINCESS IDA	1953 SHOW BOAT	1973 ROBERT & ELIZABETH	1993 KISS ME KATE
1929 IOLANTHE	1954 BRIGADOON	1974 ORPHEUS	1994 GODSPELL
1930 YEOMAN OF THE GUARD	1955 PINK CHAMPAGNE	1975 THE MERRY WIDOW	ORPHEUS
1931 TRIAL BY JURY	1956 VAGABOND KING	1976 MY FAIR LADY	1995 HELLO DOLLY
PIRATES OF PENZANCE	1957 WHITE HORSE INN	1977 THE GREAT WALTZ	1996 PIRATES OF PENZANCE
LES CLOCHES DE CORNEVILLE	1958 SUMMER SONG	1978 FIDDLER ON THE ROOF	1998 ME & MY GIRL
1932 QUAKER GIRL	1959 THE MERRY WIDOW	1979 THE KING & I	1999 SINGIN' IN THE RAIN
1933 MIKADO	1960 SONG OF NORWAY	1980 SHOW BOAT	2000 SWEET CHARITY
1935 GONDOLIERS	1961 NAUGHTY MARIETTA	1981 HELLO DOLLY	2001 HALF A SIXPENCE
MERRIE ENGLAND	1962 THE DANCING YEARS	1982 CAMELOT	2002 CAROUSEL
1936 DUCHESS OF DANZIG	1963 KISMET	1983 HALF A SIXPENCE	2003 THE KING & I
1937 VAGABOND KING	1964 THE MOST HAPPY FELLA	1984 BRIGADOON	2004 OLIVER
1938 COUNTRY GIRL	1965 THEY CAME TO A CITY	1985 GUYS & DOLLS	2005 CRAZY FOR YOU
1946 THE BEGGARS OPERA	THE STUDENT PRINCE	CAROUSEL	2006 MY FAIR LADY
1947 TOM JONES	1966 HAY FEVER	1986 PIRATES OF PENZANCE	2007 CAMELOT
THE ARCADIAN	LA BELLE HELENE	THE SOUND OF MUSIC	2008 SOUTH PACIFIC
1948 WALTZ DREAM	1967 CAROUSEL	1987 SOUTH PACIFIC	2009 FIDDLER ON THE ROOF
1949 NEW MOON	1968 COUNT OF LUXEMBOURG	OLIVER	2010 CALAMITY JANE
1950 THE WIND AND RAIN	1969 OKLAHOMA	1988 THE DESERT SONG	2011 SWEENEY TODD
DESERT SONG	1970 KISS ME KATE	ANNIE GET YOUR GUN	
		1989 MIKADO	
		MY FAIR LADY	
		1990 THE PAJAMA GAME	
		THE MUSIC MAN	



Jesus Christ  
**Superstar**



## **THE SOCIETY**

**PRESIDENT** JOHN ENFIELD

### **LIFE MEMBERS**

ANN DYE, JOHN ENFIELD, DAVID FORDER, SYLVIA HAWKINS, KEN SMITH,  
MICHAEL SPURGEON, COLIN THORNE

### **EXECUTIVE COMMITTEE**

<b>CHAIRMAN</b>	MIKE SPURGEON	<b>SECRETARY</b>	LIZ THORNE
<b>BUSINESS MANAGER</b>	MARK FINCHAM	<b>TREASURER</b>	NORMAN RYAN
<b>MEMBERSHIP SEC.</b>	COLIN THORNE	<b>PUBLICITY</b>	CAROLINE FRITZ
<b>PROGRAMME</b>	NORMAN RYAN	<b>CO2 CHAIR</b>	ANN TAYLOR
<b>COSTUME &amp; PROPS.</b>	MAGGIE WALTON	<b>SOCIAL COMMITTEE</b>	BARBARA SCULLY
<b>CAST LIASON</b>	CAROLINE FRITZ	<b>WEBSITE</b>	JOHN DAVIES

### **COME and JOIN US?**

Could it be you appearing in next year's production? Perhaps you would like to try your hand at any of the many backstage roles – lighting, props, costumes, make up, front of house or perhaps you would like to give us a hand promoting the Society. We are a well established group who none-the-less welcome new faces, voices and ideas from right across the age spectrum. The production you are watching has five new faces in it, and many who also perform with our younger group, CO2.

We are fortunate in being able to perform our shows in this theatre, with all the facilities that a professional theatre can offer but the Society is more than the faces you see on stage. Many of the technical roles are undertaken by Society members. For some the theatrical experience has been the start of a career in the theatre, for others it is a really rewarding hobby, which in many cases has led to lifelong friendships. Our membership includes many generations of the same families showing just how pleasurable and addictive amateur theatre can be!

Interested? You can apply to become a member either by contacting our membership Secretary Colin Thorne (details below) or by visiting our website:

**[www.colchesteroperaticsociety.co.uk](http://www.colchesteroperaticsociety.co.uk)**

Colin Thorne. 34, Laburnum Way, Nayland Colchester CO6 4LG. Tel: 01206 262664  
[cjtthorne@btinternet.com](mailto:cjtthorne@btinternet.com)

## ACKNOWLEDGEMENTS

The committee and all members of the Colchester Operatic Society would like to express their public thanks to all those who contributed to this production through their help in the Green Room and Front of House.

Thanks also to Clacton Musical Theatre Society for supplying a selection of props.

### Special Thanks Extended to:

All members of the Mercury Theatre Staff who have been outstanding.  
Montgomery School for rehearsal facilities – Head Teacher Sally Leung especially, as we could not manage without you.

## PRODUCTION TEAM / SUPPLIERS

### STAGE DIRECTOR

Mike Spurgeon

### SCENERY

Scenic Projects Ltd

### COSTUMES

Dereham Theatrical

### PROGRAMME COVER

Jo Woolf

### PROGRAMME

Norman Ryan & Emma Ward

### POSTER/PROGRAMME PRINTERS

Mail Boxes Etc., Colchester

### PRODUCTION SOUND ENGINEER

Philip Spurgeon

### SOUND ASSISTANTS

Sam Brazier, Francesca Keeling

### NO. 1 SOUND

Martyn Hunt

### NO. 2 SOUND

Joe Hawken

### STAGE MANAGER

Alan Larner

### STAGE CREW

Terry Lyon, Bob Wilkinson,  
Ashley Gorbut, Members of COS & CO2

### WARDROBE TEAM

Beryl Balls, Jo Read,  
Shirley Tindall

### PROPS TEAM

Maggie Walton, Ann Taylor

### MAKE-UP

Members of COS & CO2

### PHOTOGRAPHY

Sally Parkinson Photography

### WIGS

Derek Easton Wigs, Peacehaven

### MARKETING TEAM

Caroline Fritz, Emma Ward, Charlotte Butcher, Laura Wyatt, Pat Prestney,  
Ben Powell, Barbara Pears.

### THE BAND

**Keyboards:** Neil Sommerville, Daniel Law, Phil Toms. **Reeds:** Jane Elston. **Trumpet:** John Jermy.  
**Horn:** Kay Dawson. **Guitars:** Martin Donald, Daniel Parker. **Bass:** Mike McGibney.  
**Percussion:** Pearl Gibson. **Drums:** Sam Leggett.

Many thanks to all our advertisers. Without their support a programme of this standard would just not be possible.

Please reciprocate and show your support to them by availing yourself of their services.





81-83 Crouch Street  
Colchester  
01206 572200  
[www.guntons.co.uk](http://www.guntons.co.uk)  
[info@guntons.co.uk](mailto:info@guntons.co.uk)

## Colchester's Specialist Grocer

With Christmas on the way, why not give a Guntons hamper tailor made to your specification  
OR choose from the range on offer in store.

We also stock;

Local produce including honey, jams, pickles, mustards,  
rye bread, sausages, bacon, ham, ice cream,  
fruit juices, bread and fish.

We have a delicatessen, including our 'home cooked' ham,  
Italian and Spanish cured meats and fresh olives.

A huge range of farmhouse cheeses.

Coffee roasted on the premises,  
available in the shop or in our coffee rooms.

A wide range of black, green, fruit and herbal teas.

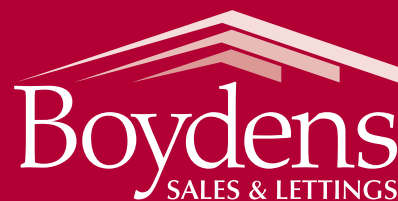
A large range of specially sourced own label products.

Large range of basketware.

Colchester tea towels, shopping bags and linenware.

Local take home gifts and hampers available all year.

**Our friendly staff are always willing to help!**



## Be Home Soon

Aston House, 57 - 59 Crouch Street,  
Colchester. Essex. CO3 3EY.

T: Sales 01206 762244

T: Lettings 01206 762276

E: [enquiries@boydens.co.uk](mailto:enquiries@boydens.co.uk)

**[www.boydens.co.uk](http://www.boydens.co.uk)**

Other branches at:- Frinton-on-Sea, Braintree, Kelvedon, Ipswich & Sudbury.

# WALLACE DRIVING ACADEMY

- ✓ Patient and caring fully qualified male and female instructors
- ✓ One to one tuition to suit you
- ✓ Discounts on block bookings
- ✓ Pick up from home, school, college or work etc
- ✓ Nervous Learners and apprehensive drivers a specialty
- ✓ Pass Plus, Refresher, Semi intensive and Motorway courses available
- ✓ Theory & Hazard Perception Training

*'learn to drive with confidence'*

*Your Professional, flexible, friendly*

*Driving School*

*£10 for 1<sup>st</sup> 2hour lesson*

(On presentation of this advert. Valid until 31<sup>st</sup> December 2011. New clients only)

Contact us:

01206 205401 • 01376 501044 • 01245 700974

[www.wallacedrivingacademy.co.uk](http://www.wallacedrivingacademy.co.uk) • Check our Facebook Group for pupil feedback

# Hatfields BUDGET & CLEARANCE OUTLET

## Have you visited Hatfields Budget & Clearance Outlet yet?

With great prices all year round we offer a wide selection of leather and soft cover upholstery, dining, beds and bedroom furniture, mattresses, sofas and occasional items.

Plus, spread the cost with **Interest FREE Credit\***  
**Up to 50% OFF** an extensive range of clearance items all year round!!



4'6" x 6'3"  
2 Drawer Divan Set  
**£259**  
Previous Price £349

**Onyx** This bed offers cushioned comfort with supportive springs.

	Previous Price	Offer Price
Single 3'0" x 6'3" 2 Drawer Divan	£249	<b>£199</b>
King Size 5'0" x 6'6" 2 Drawer Divan	£419	<b>£329</b>



Large Table  
& 6 Chairs  
**£699**  
Previous Price £1149

**Royal Oak** A stunning solid oak living and dining room collection.

	Previous Price	Offer Price
3 Door Sideboard	£699	<b>£459</b>
China Cabinet	£999	<b>£679</b>



Corner Group  
**£1099**  
Previous Price £1319

**Selina** Left Hand Facing 2 Seat Corner Group

Shown in Saddle Mushroom, Cube Mink, Burberry Mushroom & Kenzo Mushroom fabric. Also available as a standard Sofa & Chair.



2 Drawer  
Bedside Chest  
**£185**  
Previous Price £239

**Anastasia** Other colour finishes available.

	Previous Price	Offer Price
4'6" Bedframe with slats	£569	<b>£449</b>
3 Drawer Chest	£399	<b>£299</b>
6 Drawer Tallboy	£479	<b>£379</b>
2 Door Wardrobe	£759	<b>£599</b>

Exclusive 'Mercury Theatre' Offer

# Extra 5% OFF

## Collections at Hatfields BUDGET & CLEARANCE OUTLET

(\*Includes all products at Hatfields Budget & Clearance Outlet only. Can not be used in conjunction with any other offers, clearance items or on outstanding balances. Valid until 22nd November 2011. One voucher per order only. Excludes concessions.)



Peartree Road, Stanway, Colchester, Essex CO3 0JS

T: 01206 731222 E: [hbco@hatfields.com](mailto:hbco@hatfields.com)

[www.hatfieldsoutlet.com](http://www.hatfieldsoutlet.com)

\*Credit is subject to status. Written quotations available upon request.