

# ESSEX & SUFFOLK EQUITABLE INSURANCE SOCIETY LIMITED

ESTABLISHED  
OVER  
100 YEARS.



Authorised  
Capital £600,000

Subscribed  
Capital £560,000

Paid-up  
Capital £56,000

## DEPARTMENTS OF INSURANCE:

### FIRE

WORKMEN'S COMPENSATION.

### MOTOR CARS

MOTOR TRACTORS.

### HORSE DRIVING RISKS

PERSONAL ACCIDENTS.

### "HOME COMPREHENSIVE"

(Combining Fire, Domestic Servants, Burglary,  
and other Contingencies in one Policy.)

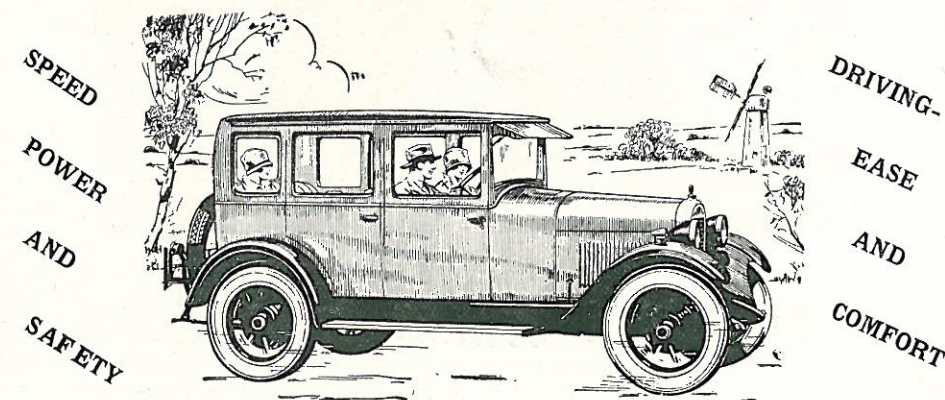
For Prospectus and Rates apply to—

HEAD OFFICE .. ..	THE FIRE OFFICE, COLCHESTER.
LONDON OFFICE .. ..	56-62, NEW BROAD STREET, E.C.2.
CHELMSFORD BRANCH .. ..	DUKE STREET.
CAMBRIDGE BRANCH .. ..	62, SIDNEY STREET.
IPSWICH BRANCH .. ..	CORNHILL.

## See the new and greater **ESSEX Super-Six** IN OUR SHOW-ROOMS

SPEEDABOUT, 2-Seater	£245	COACH, 2-door	-	£245
TOURER, 4-5 Seater	£250	COACH de LUXE	-	£255
COUPE, 2-Seater	-	£250	SEDAN de LUXE	-
				£275

Front wheel brakes £7 extra all models



THE SEDAN DE LUXE BODY HAS EASIER CURVES, TOGETHER WITH SEVERAL INCHES ADDED LENGTH, WHICH INCREASED SPACIOUSNESS AND ROOMINESS BRINGS NEW COMFORT TO ALL PASSENGERS. WRITE FOR FULL PARTICULARS. A TRIAL RUN WITHOUT OBLIGATION.

## SCOTT BROS.

Telegrams:  
"Mortracks"

Telephone:  
111

MAIN AGENTS

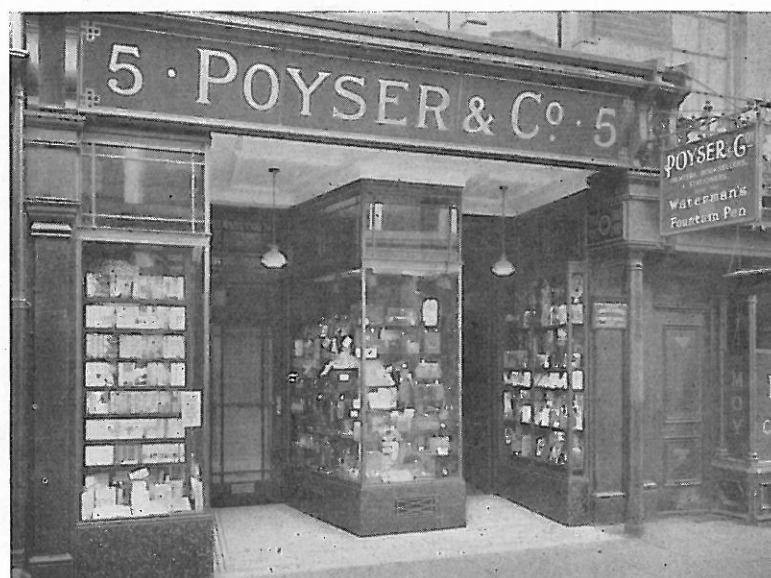
78 and 86, MILITARY ROAD, COLCHESTER

NO CONNECTION WITH ANY OTHER FIRM.



# BUY IN COMFORT

COME TO



Our New Windows designed by Mr. Duncan W. Clark, F.R.I.B.A.

## For Your Xmas Shopping

BOOKS	LADY'S BAGS	BRASS GOODS
CHRISTMAS CARDS	LETTER CASES	MANICURES
CALENDARS	PURSES	PHOTO FRAMES
XMAS STATIONERY	PLAYING CARDS	BLOTTERS

SOMETHING FOR EVERYBODY

### Top of HIGH STREET

Opposite the Fire Office

'Phone 201

# Colchester Amateur Operatic Society

present by permission of  
R. D'OYLY CARTE

## PRINCESS IDA

OR

## CASTLE ADAMANT

BY

W. S. GILBERT and ARTHUR SULLIVAN

AT THE

### Hippodrome Theatre, Colchester

*Lessees: Gaumont-British Picture Corporation Ltd.*

*Manager: Mr. L. M. Collings.*

## On TUESDAY, NOVEMBER 29th, 1927

and FOUR FOLLOWING NIGHTS at 7.45 p.m.

— CARRIAGES AND LATE TRAMS AT 10.15 O'CLOCK —

Matinees: Wednesday, Nov. 30th, and Saturday, Dec. 3rd, at 2.15 p.m.

Photographs by F. C. LANKESHEER, Colchester

Cover design by H. W. PEARCE

The extracts from the libretto are given by kind permission of Lady Gilbert.

Printed by Benham and Company Limited, 24, High Street, Colchester.



# Jacklin

## High-Class Confectioner

We have almost completed our New Building and hope to have the use of our new premises well in time for Xmas Shopping

Watch our new windows for ideal Xmas Gifts

Our new and up-to-date Cafe on the First Floor will be ready very shortly

147, HIGH ST.,  
COLCHESTER

We have a Branch Shop at 52, Head St.

TEL. 157

## The Colchester Amateur Operatic Society.

THIRD SEASON, 1927.

### Souvenir Programme.

#### Vice-Presidents :

THE BISHOP OF COLCHESTER (THE RIGHT REVEREND T. A. CHAPMAN).  
HIS HONOUR JUDGE CHETWYND-LEECH.  
SIR LAMING WORTHINGTON-EVANS, BART., P.C., M.P.  
W. GURNEY BENHAM, ESQ., J.P., C.C.  
MRS. W. COATS HUTTON.  
HENRY GRIMWADE, ESQ.  
E. A. MELSON, ESQ.  
P. A. SANDERS, ESQ., O.B.E., J.P., C.C.  
A. G. MUMFORD, ESQ., J.P.  
N. C. GOODY, ESQ.  
ALFRED CROWTHER, ESQ.

#### Executive Committee :

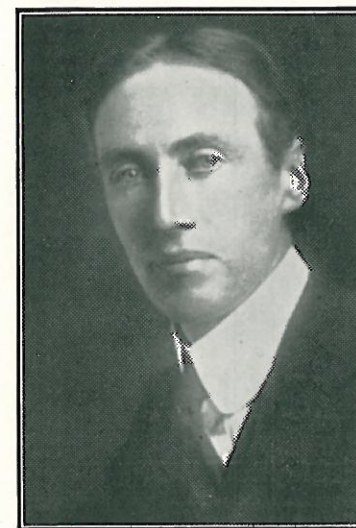
J. O. PARKER (Chairman).  
MRS. R. G. ARCHIBALD. F. J. COLLINGE.  
MRS. ALAN HODSON. CAPT. F. G. H. FOGG,  
MRS. D. HAMILTON M.B.E., M.C.  
A. W. PIPER.

#### Management Committee :

A. W. PIPER. DUNCAN W. CLARK.  
MRS. ALAN HODSON. MRS. D. HAMILTON.  
and HON. MUSICAL DIRECTOR.



President :  
His Worship the Mayor  
(Councillor ERNEST H. TURNER),  
Hon. Musical Director.



W. W. TOWNSEND,  
Hon. Treasurer

Hon. Musical Director :  
ERNEST H. TURNER,  
A.R.C.O.

Hon. Business Managers :  
DUNCAN W. CLARK,  
A. W. PIPER.

Hon. Secretary :  
M. J. BAILEY,  
Barclays Bank, Colchester.

Hon. Treasurer :  
W. W. TOWNSEND.

Producer & Stage Manager :

H. ASHLEY COOPER.



DUNCAN W. CLARK,  
Hon. Business Manager.



# IND COOPE'S FAMOUS ALES

Every one should see

"PRINCESS IDA"

AND

Every one should say

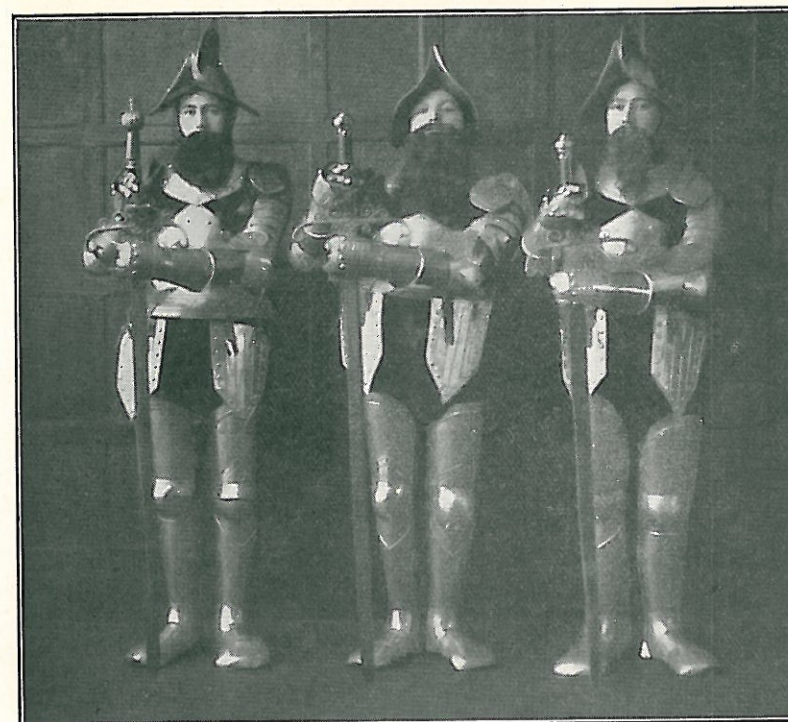
IDA "NUT BROWN"

FAMILY TRADE SPECIALLY  
CATERED FOR

Local Depot:

74, East Hill, COLCHESTER

Telephone 22.



Arac, Guron and Seynthus—

"Like most sons are we,  
Masculine in sex."

Guron—Harold Cross  
Arac—Jack Cole.  
Seynthus—Wilfred C. Brown.



Princess Ida—Dorothy Ford.  
Hilarion—W. Hubert Ford.

Hilarion—  
"If heart of stone for heart of fire,  
Be all thou hast to give,  
If dead to me my heart's desire,  
Why should I wish to live?"



# JOSLINS LTD.

Ironmongers, Cabinet Makers, China and Glass, etc.

ELECTRICAL, HOT WATER & SANITARY ENGINEERS

MOTOR TYRES AND ACCESSORIES

FLASH LAMPS : AND BATTERIES BICYCLES

SPECIALISTS IN

Genuine Antique Furniture

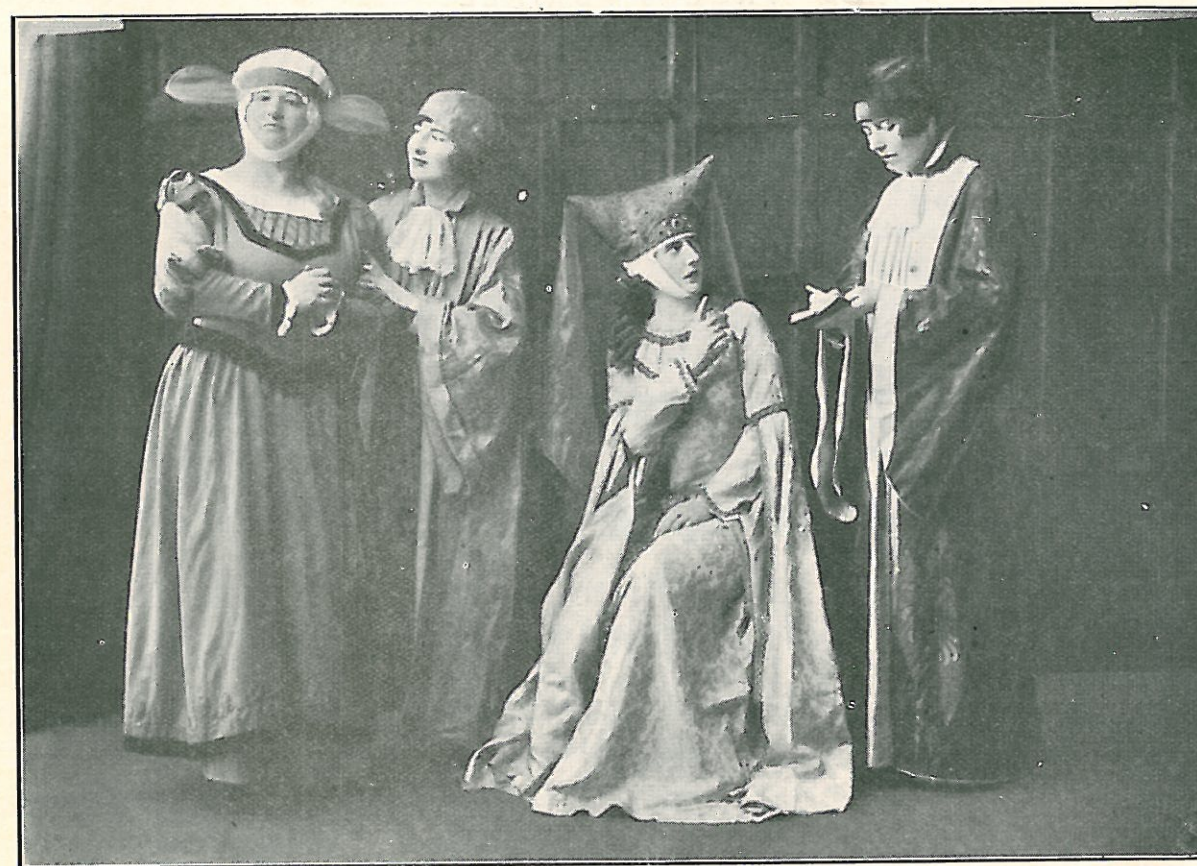
EVERYTHING FOR WIRELESS  
COMPLETE INSTALLATION

Batteries Recharged and Repaired by Experts.

Free Collection and Delivery in Colchester.

108 & 109, High Street, COLCHESTER

TELEPHONE NO. 8



*Lady Blanche*—Gina Brée.  
*Melissa*—Phyllis Baker.

*Princess Ida*—Dorothy Ford.  
*Lady Psyche*—May Heap.

*Lady Blanche*—

"The first is Sacharissa—  
She's expelled, because although she knew  
No man of any kind may pass our walls,  
She dared to bring a set of chessmen here."



EVENING CLOAKS  
 FROCKS FOR ALL  
 OCCASIONS  
 TAILOR MADE  
 SUITS, and COATS  
 SPORTS CLOTHES  
 READY-TO-WEAR  
 AND  
 MADE TO ORDER

# FIELD

27 & 29, CROUCH ST.  
 COLCHESTER

TELEPHONE 275

TELEGRAMS—  
 FIELD, COSTUMIER  
 COLCHESTER

This Week, An Entirely New Series of  
 EVENING GOWNS

## The Musical Numbers.

(Silence is requested during the playing of the Introduction.)

INTRODUCTION .. .. . ORCHESTRA

### Act 1.

1. CHORUS AND SOLO (Florian) .. .. " Search through-out the panorama "
2. SONG (Hildebrand and Chorus) .. .. " Now hearken to my strict command "
3. RECIT. AND SONG (Hilarion) .. .. " To-day we meet "
4. CHORUS .. .. " From the distant panorama "
5. TRIO (Arac, Guron, Scynthius and Chorus) .. .. " We are warriors three "
6. SONG (Gama) .. .. " If you give me your attention "
7. FINALE .. .. " P'raps if you address the lady "

### Act 2.

8. CHORUS OF GIRLS AND SOLOS .. .. " Towards the empyrean heights "  
 (Lady Psyche, Melissa and Chloe)
9. CHORUS OF GIRLS .. .. " Mighty maiden with a mission "
10. RECIT. AND ARIA (Princess) .. .. " Minerva ! O hear me ! "
11. SONG (Blanche) .. .. " Come, mighty must "
12. TRIO (Hilarion, Cyril and Florian) .. .. " Gently, gently "
13. TRIO (Hilarion, Cyril and Florian) .. .. " I am a maiden, cold and stately "
14. QUARTETTE (Princess, Cyril, Hilarion and Florian) " The world is but a broken toy "
15. SONG (Lady Psyche, with Hilarion, Cyril and Florian) " A lady fair of lineage high "
16. QUINTET (Psyche, Melissa, Hilarion, Cyril and Florian) " The woman of the wisest wit "
17. DUET (Melissa and Lady Blanche) .. .. " Now wouldn't you like to rule the roost "
18. CHORUS OF GIRLS AND SOLOS (Blanche and Cyril) .. .. " Merrily ring the luncheon bell "
19. SONG (Cyril) .. .. " Would you know the kind of maid "
20. FINALE ACT 1. (Princess, Hildebrand, Melissa, Lady Psyche, Blanche, Hilarion, Cyril, Florian, Arac, Guron, Scynthius and Chorus of Girls and Men)

### Act 3.

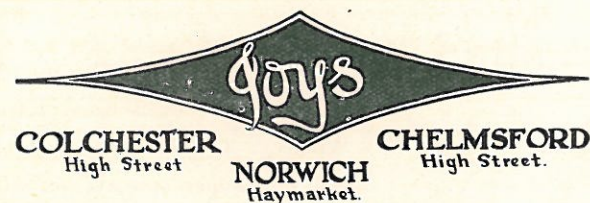
21. CHORUS AND SOLO (Melissa) .. .. " Death to the invader "
22. SONG (Princess) .. .. " I built upon a rock "
23. SONG (King Gama, with Chorus of Girls) .. .. " Whene'er I spoke sarcastic joke "
24. CHORUS OF LADIES AND SOLDIERS .. .. " When anger spreads his wing "
25. SONG (Arac, with Guron, Scynthius and Chorus) .. .. " This helmet I suppose "
26. CHORUS DURING THE FIGHT .. .. " This is our duty plain "
27. FINALE .. .. " With joy abiding "



The HOUSE with the 1,000 Selection

# DISTINCTIVE GOWNS AND DANCE FROCKS

SEE THE  
ARCADES  
AND  
WINDOWS



## Colchester Amateur Operatic Society.

1925 "THE GONDOLIERS."

1926 "THE MIKADO."

### THIRD YEAR.

*The Colchester Amateur Operatic Society have much pleasure in presenting "Princess Ida" and sincerely trust that their efforts will afford pleasure and entertainment to all.*

### A Foreword to "Princess Ida"

"Princess Ida" is the seventh of the Gilbert and Sullivan Operas, and was first produced at the Savoy Theatre on January 5th, 1884.—Inspired by Tennyson's "Princess" it was, as Gilbert himself pointed out, a "respectful perversion" of the well-known poem. The theme, which is one of feminine independence, remains unchanged, but in the operatic version the ending is much altered and the characters severely satirised. The story introduces two royal households, one presided over by King Hildebrand, with whom are his son Hilarion and two friends, Cyril and Florian; the other by King Gama, father of Princess Ida, and of three warrior sons, by name, Arac, Guron and Scynthus. At the early age of one Ida was betrothed to Hilarion and it is 20 years after that event that the play opens—it is the day on which Ida should have appeared for her marriage to Hilarion and the scene shows us Hildebrand, Hilarion and the expectant Court. Only Gama, however, and his three sons arrive—Ida, conscious of the wrongs of women, has withdrawn from the society of men and founded, at "Castle Adamant," a University for women, from which all males are rigidly excluded. With her are two Professors, Lady Psyche and Lady Blanche, the latter's daughter Melissa and many girl graduates. Annoyed at this repudiation by Ida of her infant promise, Hildebrand promptly imprisons Gama and his sons, but Hilarion and his friends, relying on more peaceful persuasion, make their way to Castle Adamant, where they break in and impersonate girl graduates. Against womanly intuition the deception could not long be maintained, and the identity of the men is soon found out by Lady Psyche, Melissa and Lady Blanche, although for personal reasons none of these ladies divulges the secret—this is revealed to the Princess by the indiscretion of Cyril. To describe the succeeding events anticipates the play, how Hilarion saved Ida from drowning, the arrest of the three friends, the storming of the Castle by Hildebrand and his troops, Ida's call on her graduates to arms, the great fight between Hilarion, Cyril, and Florian and Arac, Guron and Scynthus, which decided the future of Ida, and the happy ending.

With joy abiding,  
Together gliding,  
Through life's variety  
In sweet society,  
And thus enthroning  
The love I'm owning,  
On this atoning  
I will rely!

*The Colchester Amateur Operatic Society was founded in 1925 for the production of Comic and Light Operas. New members are gladly welcome, as the management are always on the look-out for new talent. The subscription is a nominal one of 5s., and carries with it the privilege of prior booking.*

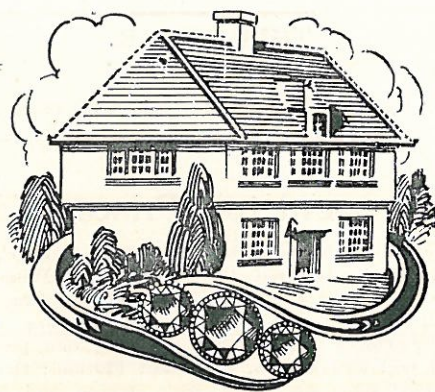
*The Society again express their thanks to all those who have so kindly and readily given their help and co-operation.*



*Buy your Christmas Presents at*

118  
High  
Street,  
Colchester

Telephone  
412



118  
High  
Street,  
Braintree

Telephone  
177

The  
**RING HOUSE**

**Dennis W. Jeffery & Sons**

Watchmakers, Jewellers, &c.

*Choice Selection of Gifts that Last*

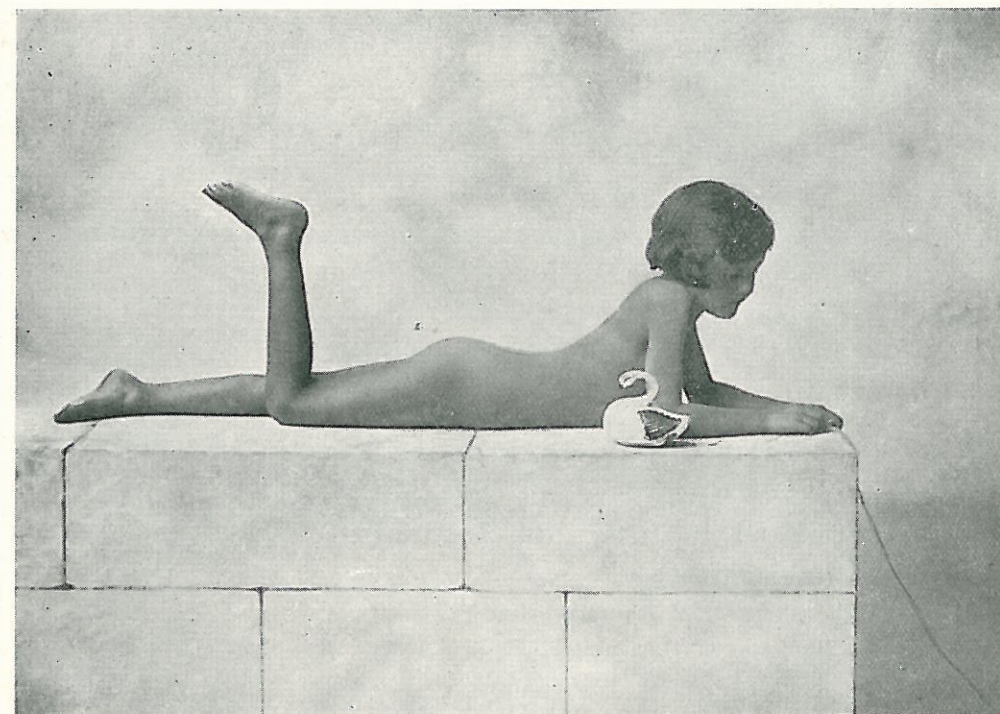
*For Ladies :*

GEM RINGS  
WATCH BRACELETS  
SLAVE BANGLES  
BRUSH SETS, &c.

*For Gentlemen :*

CIGARETTE CASES  
SIGNET RINGS  
LINKS, STUDS  
WATCHES, &c.

Camera Study



"DAY DREAMS"

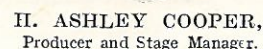
Produced by

**OSCAR WAY**

HEAD STREET  
COLCHESTER

*Whose portrait studies look uncommonly well*





## OR

## BY

W. S. Gilbert & Arthur Sullivan



KING HILDEBRAND ...	... ..	T. GRAY
HILARION (his Son) ...	... ..	W. HUBERT FORD
CYRIL } (Hilarion's Friends)	... ..	{ HERBERT BISCHOFF
FLORIAN }	... ..	{ HAROLD TURNER
KING GAMA ...	... ..	F. J. COLLINGS
ARAC }	... ..	{ JACK COLE
GURON } (his Sons)	... ..	{ HAROLD CROSS
SCYNTHIUS }	... ..	{ WILFRED C. BROWN
PRINCESS IDA (Gama's Daughter)...	... ..	DOROTHY FORD
LADY BLANCHE (Professor of Abstract Science)	... ..	} GINA BRÉE*
LADY PSYCHE (Professor of Humanities)	... ..	{ JOSÉ SCOTT†
MELISSA (Lady Blanche's Daughter)	... ..	... MAY HEAP
SACHARISSA }	... ..	{ PHYLLIS BAKER
CHLOE }	(Girl Graduates) ... ..	{ DORIS PIPER
ADA }	... ..	{ DOROTHY HAMILTON
		GRACE RAINBIRD

\* Friday Evening, Saturday Evening, both Matinees.

† Tuesday, Wednesday and Thursday Evenings.

Soldiers, Courtiers, "Girl Graduates," "Daughters of the Plough," etc.

F. T. HAMILTON  
HORACE PEARCE (Understudy  
Cyril)  
VAUGHAN PENDRED  
LESLIE C. W. ROBERTS  
ALAN HODSON  
ALEX R. WILSON  
W. BRUCE  
HENRY NEALE  
AUBREY MAYO  
ALFRED C. SAUNDERS  
A. H. DOWN  
WILLIAM V. GRIBBELL (Under-  
study Hildebrand)  
CHARLES F. JEFFERY  
HUBERT C. GOODRAM (Understudy  
Florjan)  
J. G. THIRLIE  
C. LUPTON FIELDEN (Understudy  
Gama)

JOHN KENT  
CYRIL DOUBLE  
CLIFFORD ELLIS  
ALBERT E. LEGGETT

F. F. CORK	}	<i>Guards</i>
N. JOSCELYNE		

EVA PALMER  
WINIFRED WARD  
MAUD CATER  
JOYCE ARNOTT  
DORIS EVERITT  
ETHEL C. TURNER  
VERA BONNER  
DORIS B. NEALE (Understudy  
Psyche)  
MURIAL PECK  
NANCY BARKER

DOROTHY KENDREW  
GLADYS STEED  
E. C. TOMPSON  
BETTY JONES  
WINIFRED EVERETT  
OLIVE CHAMBERS  
ALICE HOLDEN  
VIOLET RICHER  
EDITH SQUIRE  
WINIFRED LEWIS  
MURIEL DOUBLE  
GLADYS ROGERS  
IRENE WAKEFORD  
WINIFRED HODSON (Understudy  
Melissa)  
KATHLEEN BROWN

OLIVE RICHER	}	<i>Daughters of the Plough</i>
HYLDA CRISP		
MAUDE CLARKE		

*Violins—*

\*DAVEY MARKS (Leader)  
GERTRUDE ABLIN  
ENID BRETT  
IDA BURSTON  
JOYCE KENNELLY  
\*JOHN LACEY  
JOAN RANDOLPH-SYMMONS  
HILDA SMITH  
JACK GODBOLD  
\*GILBERT FOSTER

*Violas*—

ROSE MEREDITH, A.R.C.M.  
J. J. SMITH  
A. H. HARVEY, L.R.A.M.,  
F.R.C.O.

'Cellos—

\*HENRY JERMY  
W. J. DOWNEY  
IDA WARD

*Double Bases—*

\*E. A. PULLEN  
FRANK BENNELL.

*Flute—*

A. LACEY

Oboe—

H. D. DOVE

*Clarionets—*

JULIAN EGERTON  
J. FETTES

*Bassoon*—

## II. O. COUSINS

## Horns—

C. F. BARTON  
J. A. MARTIN

*Cornets—*

A. FRENCH  
\*RICHARD YANTZEN

*Trombones—*

A. KENT  
W. DYE

*Tumpani, Side Drums, etc.*—

\*VINCENT RENNY

*Rehearsal Pianist*—WINIFRED HODSON, F.R.C.O.

\* Members of the Hippodrome Orchestra.

<i>ACT I.</i>	...	...	PAVILION IN KING HILDEBRAND'S PALACE.
<i>ACT II.</i>	...	...	... GARDENS OF CASTLE ADAMANT.
<i>ACT III.</i>	...	...	... COURTYARD OF CASTLE ADAMANT.

HON. MUSICAL DIRECTOR .. .. . ERNEST H. TURNER, A.R.C.O.  
(On Friday Evening the Performance will be conducted by Mr. W. F. Kingdon, Mus.Bac.)

PRODUCER AND STAGE MANAGER	..	..	..	..	..	II. ASHLEY COOPER
SCENERY, COSTUMES AND PERRUQUIERS	..	..	..	..	B. AND H. DRURY, BRIGHTON	

*Photographs by F. C. LANKESHEER, 39, High Street, Colchester.*

*Chocolates and Sweets supplied by JACKLIN, High Street and Head Street, Colchester.*

*Out of consideration for the vocalists it is hoped that gentlemen will refrain from SMOKING.*



YOU CAN BUY **ALL**  
YOUR XMAS PRESENTS

*from*

**CULLINGFORD'S**

GIFT STATIONERY, BOOKS, HANDBAGS,  
MANICURE SETS, FOUNTPENS, TABLE  
STATIONERY. All kinds of LEATHER GOODS

IN FACT THERE ARE VERY FEW  
GIFTS THAT YOU CANNOT  
FIND IN OUR HUGE STOCK

**Personal Greeting Cards**

WE SHALL BE PLEASED TO SEND  
YOU PATTERN BOOKS ON APPLICATION.

**CULLINGFORD & CO. Ltd.**

"The Fountpen House"

155-156, High Street, COLCHESTER

ALSO AT

STOCKWELL WORKS, EAST STOCKWELL STREET  
and at MANNINGTREE

'Phone 13.



*Chloe*—Dorothy Hamilton.  
*Sacharissa*—Doris Piper.  
*Ada*—Grace Rainbird.

"Pray, you tell us, if you can,  
What's the thing that's known as man?"



*King Gama*—F. J. Collinge.

*King Gama*—

"And isn't your life extremely flat  
With nothing whatever to grumble at!"



If only you had **ELECTRICITY**  
in your home

What a difference it would make to your convenience and comfort in your work and leisure.

**Use ELECTRICITY for LIGHTING  
HEATING, COOKING, CLEANING**

Avoid the unhealthy fumes, dust, dirt, and irregular heating entailed by old-fashioned ways of cooking. Cook in comfort.

Use **ELECTRICITY**

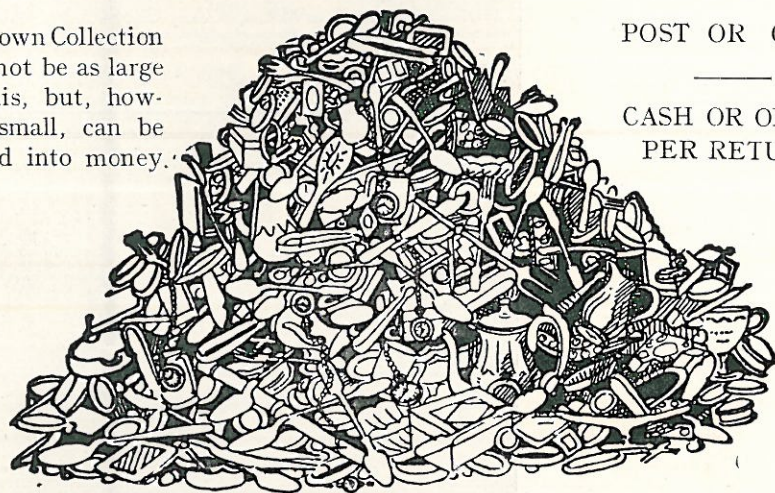
Properly cooked food is essential to health.

CALL TO-DAY AT:—

**Borough of Colchester Electricity Showroom**  
HIGH STREET, COLCHESTER

## Discarded Jewellery & Silverware

Your own Collection may not be as large as this, but, however small, can be turned into money.



POST OR CALL.

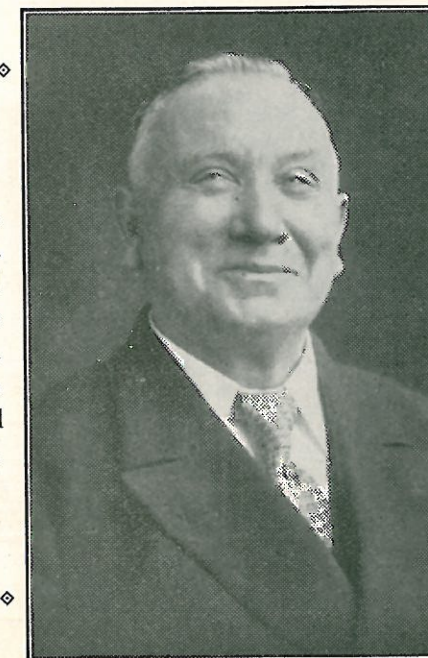
CASH OR OFFER.  
PER RETURN.

E. J. MARKHAM, Jeweller, 121-3, Priory St., Colchester

# The George Hotel

Proprietor ... W. O. OSBORNE.

HIGH STREET, COLCHESTER



You can get a  
**DELIGHTFUL  
LUNCH and  
TEA** at the  
George Hotel.  
Served in the  
Newly-appointed  
Dining Room.

Only the best  
brands of  
**WHISKEY,  
BRANDY,  
WINES, COCK-  
TAILS, BEERS  
and STOUTS**  
(bottled and on  
draught), and  
**MINERALS**  
are sold at the  
"GEORGE."

**GARAGE FOR  
: : CARS : :**

Photograph by Whitfield, Cossar & Co.,  
26, Queen Street, Colchester.

'Phone 107.

The George Hotel is under the personal  
supervision of the Proprietor,  
Mr. W. O. OSBORNE.

Try a Little Dan at the George Hotel, High Street,  
Colchester, in cheerful company, cheerful surroundings  
and cosy rooms.

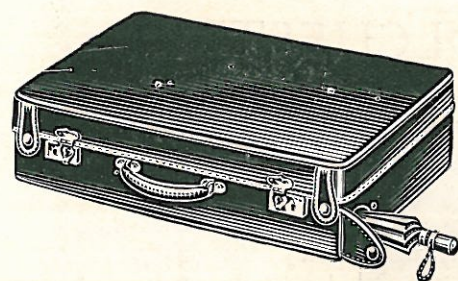


# Sands & Son, 16, HIGH STREET COLCHESTER

GIFTS FROM SANDS ARE  
SELECTED WITH EASE.  
EIGHT DEPARTMENTS—  
EIGHT SHOPS IN ONE.



GIFTS FROM SANDS COM-  
BINE QUALITY WITH INEX-  
PENSIVENESS; NOVELTY  
WITH USEFULNESS.

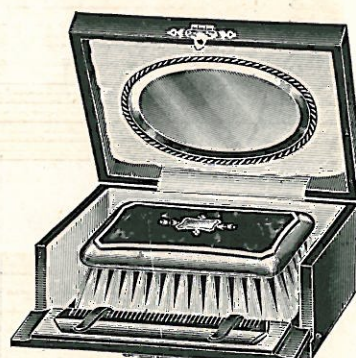


## SCENT DEPT.

### COTY GIFT.

COFFRET in grey or beige,  
suede finish, lined moire silk,  
containing 1 bottle Perfume,  
1 Gilt Compact and the new  
"Olympic" Lipstick.

Price 17/6



## PLATE DEPT.

SHINGLE SET.—A dainty gift—  
silver and real tortoiseshell

21/- and 25/6

Also in engine-turned silver or silver  
with blue or rose enamel, from

14/11 to 45/-

## TRAVELLING GOODS DEPT.

BROLLY CASES.—Every lady will appre-  
ciate the utility of this ideal innovation.  
The umbrella is safely enclosed in waterproof  
tube, but easily withdrawn without opening  
the lid or disturbing the contents of the case.

21/- to 50 -

## BUY XMAS PRESENTS EARLY



## SANDS'

### TOY DEPARTMENT



THE LARGEST AND  
MOST UP-TO-DATE IN THE EASTERN COUNTIES.

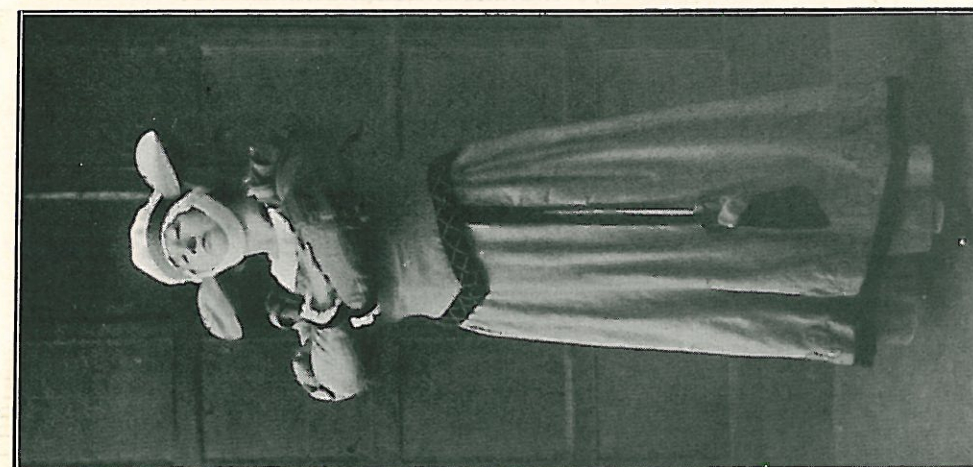
Bricks  
Forts  
Guns  
Trains  
Engines  
Paints  
Balls  
Books  
etc.



Fur Toys  
Dolls  
Games  
Toy Motors  
Meccano  
Hornby Trains  
Lines' Toys  
Soldiers  
etc.

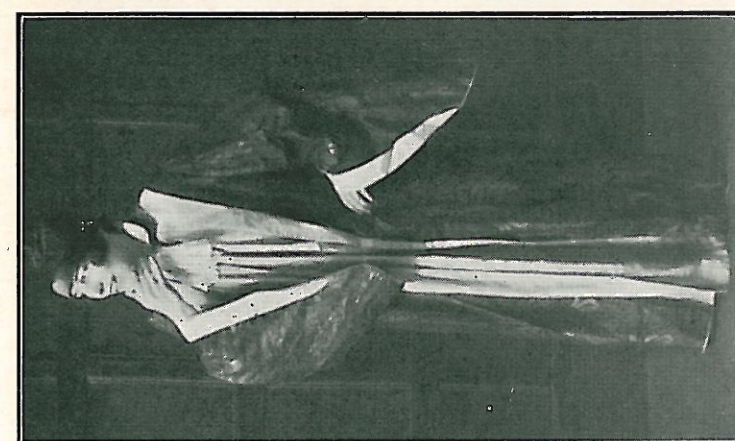
SILVER  
PLATE  
CLOCKS  
BRUSHES  
EBONY  
PERFUMES  
TRUNKS  
SUIT CASES  
BOOKS  
TOYS  
DOLLS  
GAMES

GLASS WARE  
CHINA  
HANDBAGS  
MANICURES  
LEATHER GOODS  
LAMP SHADES  
BRASS WARE  
STATIONERY  
XMAS CARDS  
CALENDARS  
PRAYER BOOKS  
BASKETS, etc.



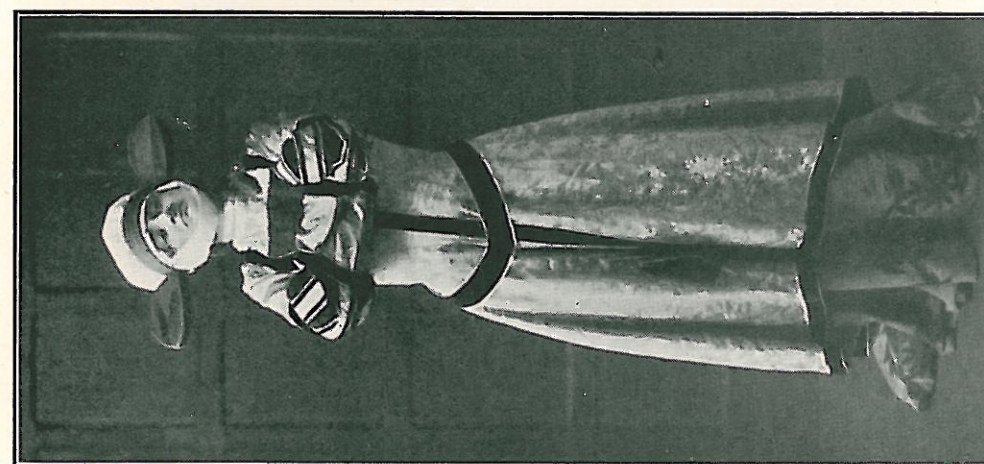
Lady Blanche—Gina Brée.

Lady Blanche—  
"I once was SOME ONE—and the WAS  
WILL BE."



Lady Psyche—May Heap.

Psyche—  
"While a man, however well-behaved,  
At best is only a monkey shaved."



Lady Blanche—José Scott.

Lady Blanche—  
"Away! The Mighty Must alone Shall  
be!"



# *At Your Service*

H. E. WILLIAMS & CO. LTD.

152, HIGH STREET  
COLCHESTER

'PHONE 66

IRONMONGERS & ENGINEERS

## *Every Sale a Seal of Satisfaction*

HEATING AND LIGHTING OF EVERY DESCRIPTION.  
COOKING UTENSILS IN ALUMINIUM, ENAMELLED,  
FIREPROOF.

ELECTRIC SHADES, FITTINGS FIRES, TOASTERS,  
HOTPLATES, IRONS, KETTLES, ETC.

OUR SHOW OF XMAS GIFTS WILL BE

## *For Every Taste For Every Pocket*



*Melissa*—Phyllis Baker.  
*Florian*—Harold Turner.

*Florian*—"I fear it's rather rough."  
*Melissa*—"Oh! don't apologise—I like it so!"



# Christmas Presents

The Annual Problem  
What Shall We Give?

THE ACCEPTABLE GIFTS  
ARE THE USEFUL ONES

THEY ARE ALL OBTAINABLE AT  
——— UTMOST VALUE ———

From

PIPERS (COLCHESTER) LTD.

General Drapers

35, 36, 37, HIGH STREET, COLCHESTER

Telephone: No. 348

Telegrams: Pipers, Colchester



Cyril—Herbert Bischoff.

Hilarion—W. Hubert Ford.

Florian—Harold Turner.

"Little heeding  
Their pretty pleading  
Our love exceeding  
We'll justify."

Hildebrand—T. Gray.



Hildebrand—

"And I'm a peppery kind of King,  
Who's indisposed for parleying  
To fit the wit of a bit of a chit."



*The Shop for  
Carpets and Linoleums*

**R. J. DALDY & SON**  
HEAD STREET and  
ST. JOHN'S STREET  
**COLCHESTER**

=====

**= The Shop for =**  
**Christmas Presents**

=====

CUSHIONS	QUILTS	CURTAINS
FANCY TABLES	SCREENS	BELLOWS
LAMP SHADES	CAKESTANDS	CANDLESTICKS

**FADELESS CHENILLE CURTAINS**

Telephone: 248 COLCHESTER

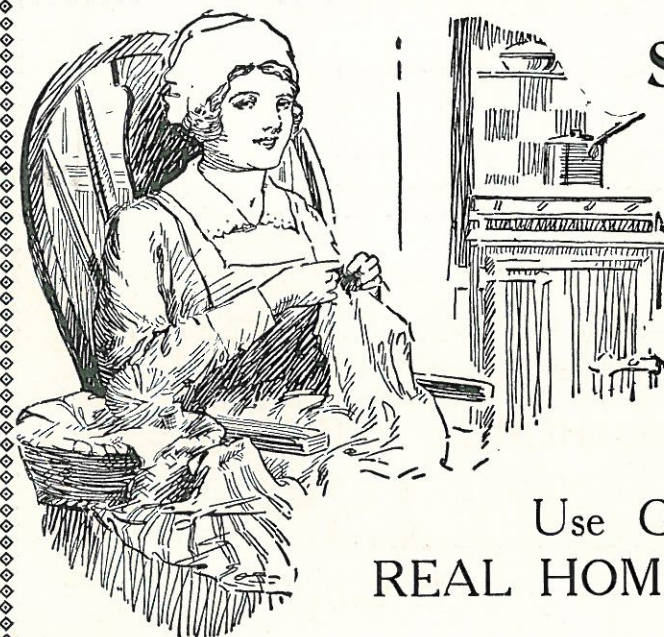
**CHESHIRE'S**—A Constant Exhibition of Beautiful  
China and Attractive Glass Ware.

WALK  
ROUND OUR  
SHOWROOMS  
AT YOUR  
LEISURE

**YOU ARE INVITED**

to walk round our spacious showrooms,  
and inspect the wonderful range of China  
and Glass which is always on view.  
Nothing gives us greater pleasure than a  
visit from those interested in the work of  
the potter. Call in and see the latest  
novelties in China and Glass; there is  
always something fresh to see. Visitors  
are not pressed to buy.

**CHESHIRE'S China & Glass Stores,**  
**24, ST. BOTOLPH STREET, COLCHESTER**  
Telephone—Colchester 56.



**Sigh No More,  
Ladies.**

Gas is the Secret of the  
well-kept and easily run  
home—gas for lighting,  
cooking, heating, and in-  
stant hot water supplies.  
Gas does away with the  
ashes, smoke and dust  
made by coal, and the  
endless labour and ex-  
pense they cause.

**Use GAS for  
REAL HOME COMFORT**



**Eye-dar**

*Fit for  
a  
Princess—*

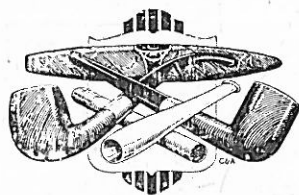
Choice Cigarettes—  
A pleasure to  
Appreciate ::

*It's time to be thinking of*  
**Christmas Presents**

We have a large selection  
of all the best brands of

**CIGARS  
CIGARETTES  
TOBACCOS**

Beautiful Smokers' Cabinets,  
also Cabinets of Cigarettes,  
Pipes, Pouches & Novelties, etc.



B. F. E.

'Phone 231

**BAYLISS**  
8, HEAD ST., COLCHESTER

WATCH YOUR FEET  
OTHER PEOPLE DO

**F. THURSTON & SON**

*Ladies' and Gentlemen's  
Boot and Shoe Makers*

THE MECCA FOR HIGHEST  
CLASS BOOTS AND SHOES

SOLE AGENTS FOR EXCELSIOR  
SHOES FOR LADIES

33, Crouch Street. COLCHESTER  
ESTABLISHED 1834 'PHONE 780

**BENHAM'S PRINTING**

IS NOTED FOR

EXCELLENCE IN QUALITY  
MODERATION IN PRICE ::  
PROMPTITUDE IN DELIVERY

ESTIMATES ON APPLICATION

Specialists in Art Work, Block-making, Heraldry,  
Illuminations, Special Designs, etc.

**BENHAM & COMPANY LIMITED**

24, HIGH STREET, COLCHESTER

MONOTYPE & GENERAL PRINTERS, PUBLISHERS,  
BOOKBINDERS, RULERS, WHOLESALE STATIONERS



**Catch a Chill !  
Doctor's Bill—  
Antidote !  
Overcoat—**



**A. Owen Ward.**  
*Fourteen, High Street, Colchester*  
*Telephone: Two Seven Two*

## PIANOS BY:—

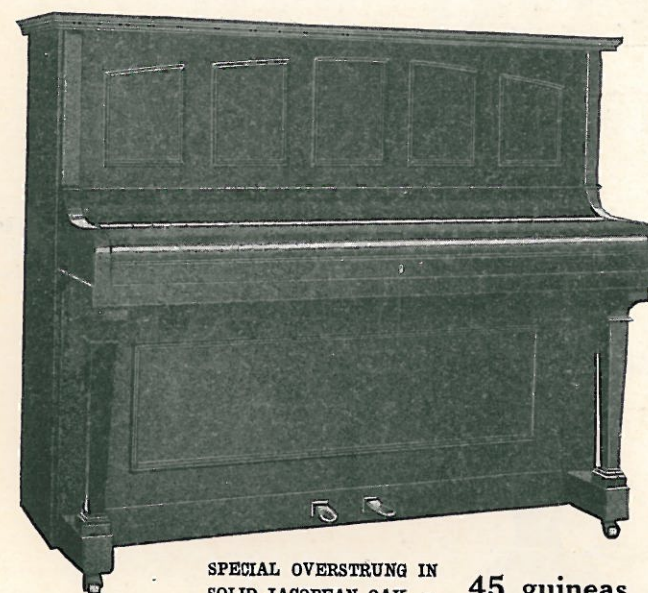
B. SQUIRE & SON  
HOPKINSON LTD.  
STECK, WEBBER, etc.

Sole Agents for:—

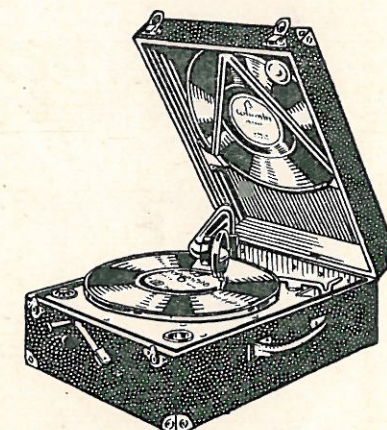
CHAPPELL & CO., LTD.  
GEORGE ROGERS & SON, LTD.  
CHALLEN & SON, LTD.  
ORCHESTRELLE CO.  
PIANOLA PIANO.

Pianos Repaired and Tuned by experienced  
men only.

Tuners sent to any District



SPECIAL OVERSTRUNG IN  
SOLID JACOBAN OAK - 45 guineas



COLUMBIA PORTABLE MODEL

Agents for:— His Master's Voice  
and Columbia Gramofola Machines  
and Records

## JAMES DACE & SON

Piano and Music Warehouse,

21, HIGH ST., COLCHESTER & 5, NEW LONDON RD., CHELMSFORD

Telephone: 293 COLCHESTER

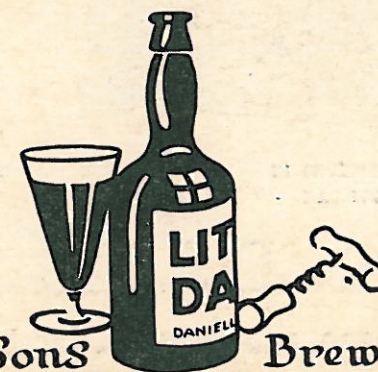
Telephone: 133 CHELMSFORD





There  
is time  
during the  
interval for a  
"LITTLE DAN"

AT  
The George  
The Red Lion  
or  
The Cups



Daniell & Sons Breweries Ltd.

Archie White