

**T
A
I
L
O
R
E
D**

*Where-ever Fashion . . .
congregates*

TAILOR built Clothes pre-
dominate, not the stiff
hard garments of the past,
but soft graceful lines achieved
by a combination of skilful
cutting, good materials and
honest hand work.

ROGERS Bros.' place at your
Service a practical and skilled
cutter, the best of materials
and real Tailoring.

LADY'S
TOWN WEAR.
COUNTRY CLOTHES.
HABITS, SIDE OR
ASTRIDE.

GENTLEMEN
HUNTING KIT TO
EVENING WEAR.

ROGERS BROS.
Tailors and Habit Makers,
COLCHESTER.

Telephone 3297.

**C
L
O
T
H
E
S**

THE
**Essex & Suffolk Equitable
Insurance Society Ltd.**

ESTABLISHED OVER 125 YEARS.



**FIRE & ACCIDENT
INSURANCE.**

Head Office :—THE FIRE OFFICE,
COLCHESTER.

The Bells of Corneville have Rung Out NOW for CHRISTMAS BELLS.

A Few Suggestions for Your Gifts—

JUST LOOK AT THAT

DAINTY HANKIES, CHIC UNDIE SETS,
SMART NECKWEAR, USEFUL KNIT WEAR.

Pure Silk Hose. All British. 1/11 $\frac{3}{4}$ to 7/11.
Beaver Coney Back Gloves, Degrain Palms,
6/11 $\frac{1}{2}$. All British.

AND LOOK AT THIS

Tea Sets (Cloth and Naps), 3/6 to 14/11.

Night-dress Satchets, 3/11 to 12/11.

Duchesse Sets, 1/0 $\frac{1}{2}$ to 4/11 $\frac{1}{2}$.

Cushions, 4/11 to 15/11.

*Dont You Think They Are Not Amiss
And All At Utmost Value*

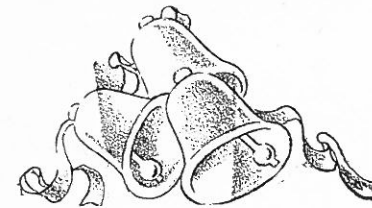
PIPERS (Colchester) LTD.

'Phone 3348.

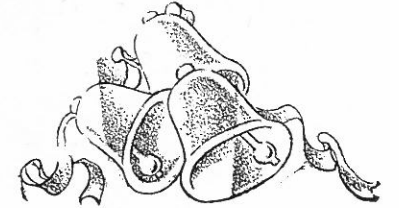
COLCHESTER AMATEUR OPERATIC SOCIETY

(SEVENTH SEASON 1931)

President: HIS WORSHIP THE MAYOR (Councillor Geo. W. B. Hazell)



Present by permission
of Messrs.
JOSEPH WILLIAMS,
Ltd.



LES CLOCHES DE CORNEVILLE

A Comic Opera

MUSIC BY ROBERT PLANQUETTE.

LIBRETTO BY
N. B. FARNIE AND R. REECE.

Producer:
H. ASHLEY COOPER.

Hon. Musical Director:
ERNEST H. TURNER, A.R.C.O.

Hon. Stage Manager:
DUNCAN W. CLARK.



PRODUCER
H. ASHLEY COOPER.

Hon. Business Manager:
A. W. PIPER.

Hon. Secretary and Treasurer:
W. W. TOWNSEND.

Assist. Hon. Secretary:
DORIS PIPER.

COSTUMES, ETC., BY B. AND H. DRURY.

AT

THE PLAYHOUSE, COLCHESTER

Lessees: Federated Estates Ltd.

Manager: Capt. W. M. Wallers, M.C.

November 30, December 1, 2, 3, 4, 5, at 7.45 p.m.

MATINEES: Thursday, December 3, and Saturday, December 5, at 2.15 p.m.

Cover Design by H. W. Pearce.

Photographs by The West End Studio.

Cartoon Sketches by permission of the Colchester Gazette.

Carriages and Late Omnibuses at 10.45 o'clock.

Tel. 2157.

JACKLIN'S CAFE AND RESTAURANT.

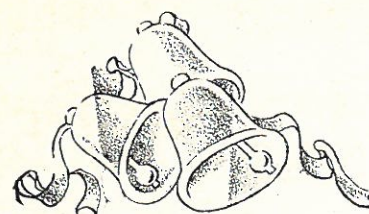
We cordially invite all our patrons
to buy our freshly roasted coffee beans
freshly ground for each customer.

We use these beans in our Café
and we are justly proud of our Coffee

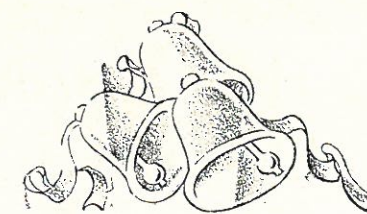
per 2/6 lb.

147, High Street,
Colchester.

We have a branch shop at 52, Head Street.



STORY OF THE OPERA



WHEN the Comte de Lucenay fled from France for political reasons, he offered the stewardship of his money and infant daughter Lucienne to a wily old retainer Gaspard. Against the hope that the Count will never return, Gaspard brings up Lucienne as his niece under the name of Germaine, turns miser, and hoards the Count's treasure in the Chateau of Corneville, empty and neglected since the old Marquis, also an exile, left it years ago.

All and sundry of the melodious Normandy village Gaspard keeps away by devices most effective in the less enlightened days of 1700, and carries his selfish ends further by promising the hand of Germaine to the pompous and stupid Bailie. Germaine, on the other hand, considers herself betrothed to Grenicheux, a worthless fisherman who has allowed her to believe that he saved her from drowning. Grenicheux, of course, has an eye to Germaine's heritage, though truly he prefers the rougher charms of Serpolette, a waif adopted by Gaspard and "dragged up" by him for menial work. Meanwhile there persists a legend that one day the young Marquis will return and that the Bells of Corneville will of themselves ring out a welcome to him.

Various complications lead Germaine, Serpolette, and Grenicheux to offer themselves as servants at the Hiring Fair, and that is the precise time at which Henri, the young Marquis, decides to abandon his seafaring and settle down in the halls of his ancestors. It is he, of course, who had really saved Germaine's life and incidentally fallen in love with her during those few brief moments at Calvados. He and his sailors search the haunted chateau and discover Gaspard's secrets. In hiding they watch the old man at his gold, and when all is revealed bring vengeance upon his head. The legendary chimes ring out, the mailed spectres of the Crusading Corneilles advance upon him, and in frenzy he falls insensible across his gold.

One doubt remains—Is Germaine or Serpolette actually Lucienne de Lucenay? Serpolette has assumed both noble parentage and fine feathers; but the truth is revealed by Gaspard as his madness passes, and the Bells ring out again for the betrothal of Henri and the real Lucienne.

The Society again express their thanks to all those who have so kindly and readily given their help and co-operation.



CLIFFORD KING as the Marquis.

THE CHARM *of* BEAUTIFUL COLOURINGS AND DESIGNS

is seen to perfection in the countless articles
exhibited at Cheshires. Walk round the show-
rooms at your leisure and judge for yourself the
quality and value of this delightful exhibition of

CHINA AND GLASS

X Do not fail to see
Cheshire's Christmas Display **X**
of China and Glass

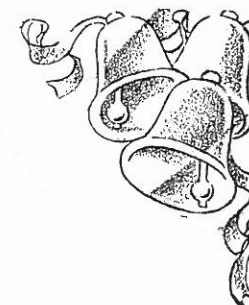
*Hundreds of useful and inexpensive Gifts
await your choice at Cheshire's showrooms.*

CHESHIRE'S
CHINA STORES,
24, ST. BOTOLPH ST., COLCHESTER.

TELEPHONE: 2084.



Musical Numbers.



SYNOPSIS OF SCENERY.

ACT I.

SCENE 1 The Seashore near Corneville.
SCENE 2 The Village of Corneville.
SCENE 3 The Market Place.

ACT II.

SCENE Chamber in Chateau de Corneville.

ACT III.

SCENE An Orchard in Corneville Park.

ACT I.

Overture.

- | | |
|--------------------------------------|------------------------------------|
| 1. Chorus | "All who for Servants" |
| 2. Air (Serpolette) and Chorus | "They say" |
| 3. Recit. and Coda | "Scandal-monger" |
| 4. Rondeau (Serpolette) | "I may be Princess" |
| 5. Barcarolle (Grenicheux) | "On Billow Rocking" |
| 6. Solo (Germaine) and Chorus | "Legend of the Bells" |
| 7. Valse Rondeau (Marquis) | "With joy my heart" |
| 8. Ensemble | "Such conduct is quite sad" |
| 9. Valse Song (Grenicheux) | "That night I'll ne'er forget" |
| 10. Chorus | "Come, farmer small" |
| 11. Chorus of Menservants | "Than us you will not find better" |
| 12. Chorus of Coachmen | "Who are drivers lacking?" |
| 13. Chorus of Maidservants | "Who are wanting maidens able?" |
| 14. Finale | "Tell me, girl" |

ACT II.

ENTR'ACTE.

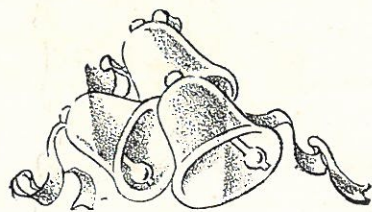
- | | |
|--|---------------------------------|
| 15. Concerted Number | "Let our torches" |
| 16. Air (Germaine) | "By his side" |
| 17. Trio (Serpolette, Grenicheux and Bailie) | "I'll shut my eyes" |
| 18. Song (Serpolette) | "Not a ghost at all" |
| 19. Recit., Air (Marquis) and Chorus | "Silent Heroes" |
| 20. Duet (Germaine and Marquis) | "Tis she! a happy fate" |
| 21. Chorus and Quintette | "As he's looking somewhat pale" |
| 22. Finale (Gaspard) and Chorus | "Love, honour, happiness" |

ACT III.

ENTR'ACTE AND DANCE.

- | | |
|--|--------------------------|
| 23. Chorus and Song (Serpolette) | "There she goes" |
| 24. Song (Serpolette) and Chorus | "The Cider Song" |
| 25. Duet (Germaine and Marquis) | "My Lord! My Lord" |
| 26. Finale | "Old man, I pardon thee" |

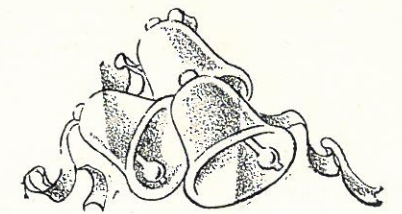
FULL REPORT AND PICTURES WILL APPEAR IN THE . . .
Colchester Gazette, and the **Essex County Standard**,
on Wednesday, December 2, on Friday, December 4.
ORDER YOUR COPY IN ADVANCE FROM ANY NEWSAGENT.



LES CLOCHES DE CORNEVILLE

:: A COMIC OPERA ::

By permission of Joseph Williams, Ltd.



Principal Characters:

MARQUIS	CLIFFORD KING
GASPARD	F. J. COLLINGE
BAILIE	NORMAN C. JOSCELYNE
GRENICHEUX	MARTIN BODDEY
GOBO	E. H. THORNTON
SERPOLETTE	PEGGY CHAPMAN
GERMAINE	PHYLLIS BAKER
CRISTOPHE	NANCY BARKER
MANETTE	WINIFRED FIELDEN
JEANNE	DORIS WARNER
GERTRUDE	DORIS PIPER
SUSANNE	LENA PRIDDLE
CATHERINE	OLIVE SMYTH

Chorus:

Peasants, Fishermen, Officers, Knights, etc., etc.

Sopranos:

VERA BONNER
GWLADYS CARTER
DORIS EVERETT
ADELAIDE MALSTER
DORIS NEALE
MURIEL PECK
EVA PALMER
MURIEL PEARCE
ETHEL TURNER
KATHLEEN WARNER

Tenors:

L. ARCHER
A. T. CLARKE
J. H. GILLING
L. J. HARPER
E. T. HAMILTON
C. JEFFERY
W. C. NUNN
H. W. PEARCE
S. H. WOOSTER
J. P. YORK

Contraltos:

WINIFRED EVERETT
LILIAN FACER
DOROTHY HAMILTON
MADELEINE JOHNSTON
BETTY JONES
WINIFRED LEWIS
GLADYS ROGERS
VIOLET RICHER
DAIDIE ROWE
STELLA SMITH

Basses:

F. F. CORK
C. L. FIELDEN
H. FIELDEN
S. W. GRIBBELL
W. V. GRIBBELL
A. T. GODBOLD
G. S. HOWARD
H. E. IRVING
D. JEFFERY
G. C. OFFORD
H. I. F. RYAN
J. SCOTT
J. SMITH
S. E. WILSON

The Audience is requested to be seated in good time and to observe SILENCE during the playing of the Overture.

Orchestra:

Violins.

* J. B. LACEY (Principal).
JACK GODBOLD
ROSALIND STROVER
GERTRUDE ABLIN
P. C. BOUTELL
MADGE PALMER
JOAN RANDOLPH-SYMMONS
F. COMPTON
*C. YOUNG

Violas.

J. J. SMITH
ERIC G. H. TURNER

Cello.

JAMES WRIGHT

Double Bass.

F. BENNELL

Oboe.

H. D. DOVE

Flutes.

H. O. COUSINS
A. M. WALKER
HERVEY W. G. BENHAM

Clarionets.

*S. SHEPPARD
*S. SHERIDAN

Bassoon.

*J. CARRICK

Horns.

C. F. BARTON
J. A. MARTIN

Cornets:

A. FRENCH
W. WILCOX

Trombones.

F. J. PETETT
*J. HOLT

Cloches.

MYFANWY POWELL
(Rehearsal Pianist)

Tympani, etc.

T. E. GORDON

Assistant Hon. Musical Director.

H. E. FACER

* Playing by kind permission
of Lt.-Col. R. Howlett, D.S.O.,
M.C., and Officers of the 2nd Bn.
The Royal Fusiliers.

Synopsis of Scenery and Musical Numbers appears
on page seven and Story of the Opera on page five.

Out of consideration for the Vocalists it is hoped that
members of the Audience will refrain from smoking.



NORMAN JOSCELYNE
as the Bailie



F. J. COLLINGE
as Gaspard the Miser.

*The biscuits so much enjoyed
by Gobo at the expense of the
Bailie of Corneville were surely
Thorogood's Ginger Snaps, and we
tremble to think of the roguery to
which Gobo would be tempted by
our Christmas Display.*



W. J. THOROGOOD,

Pastrycook and Confectioner,

21, HEAD STREET, COLCHESTER.

'Phone: COLCHESTER 3316.

Also at BRAINTREE.



PHYLLIS BAKER
as Germaine



PEGGY CHAPMAN
as Serpolette

"They Say, They Say, They Say"

THAT AT

BAYLISS'

8, HEAD STREET, COLCHESTER

THERE IS A LARGE SELECTION OF

CIGARS,
CIGARETTES
and TOBACCOS



PIPES, POUCHES and LIGHTERS, CIGARETTE CASES and
TUBES, ASH TRAYS, CABINETS and TOBACCO JARS and
all Smokers' Requisites to choose from.

Agent for the famous Loewe Briar—and Abbeygate Cigarette

What THEY SAY—is to my mind

"Than us you will not better find."

PEGGY CHAPMAN

as Serpolette



F. J. COLLINGE

as Gaspard
the Miser



WHEN THINGS LOOK BLACK

SEND TO US! WE WILL

WASH for you
DRY for you
even
DYE for you



COLCHESTER STEAM
LAUNDRY CO. LTD.

Ipswich Road, Colchester.

'Phone 3780.

James Dace & Son

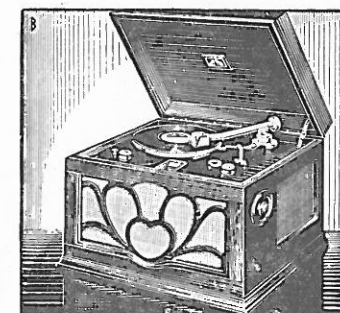
Piano and Music Warehouse,

21, High Street, COLCHESTER

'PHONE : COLCHESTER 3185.

5, New London Road, CHELMSFORD

'PHONE : CHELMSFORD 133.



Agents For—

COLUMBIA MACHINES and
RECORDS.

HIS "MASTER'S VOICE"
MACHINES, RECORDS and
RADIO.

NEW GEARS and MOTORS
FITTED.

PIANOS by Leading Makers

Sole Agents—

SQUIRE & LONGSON / /

PLAYERS & PIANOS / /

CHAPPELL & CO. LTD.

GEORGE ROGERS & SON, LTD.

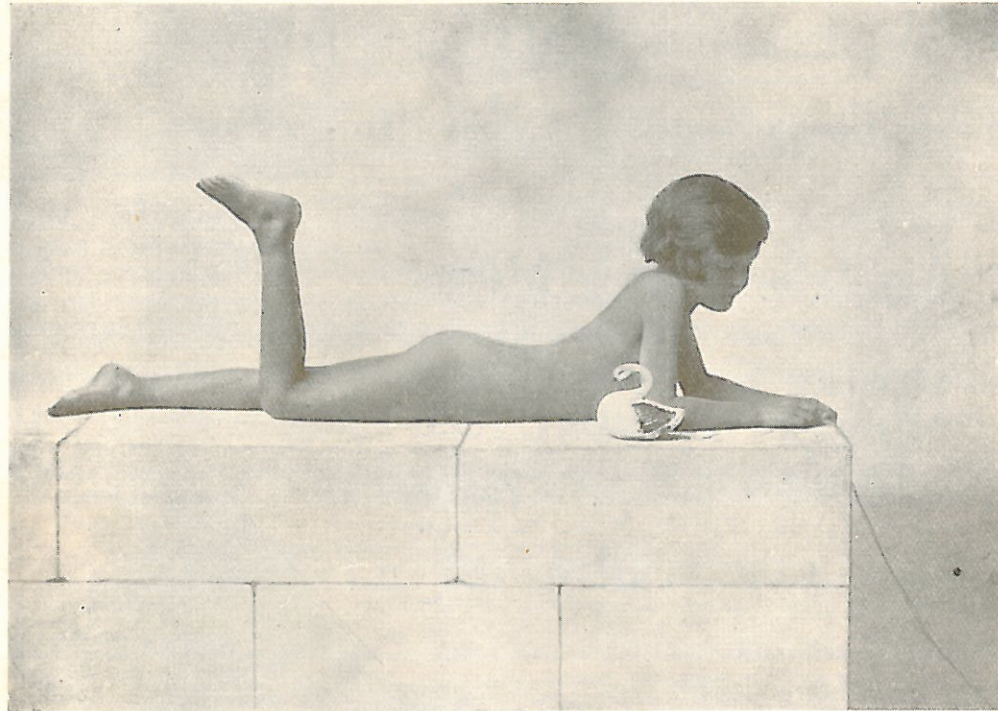
CHALLEN & SON, LTD.

Pianos Tuned and
Repaired.

Tuner sent to any
District.



CAMERA STUDY



"DAY DREAMS"

Produced by

OSCAR WAY

HEAD STREET,
COLCHESTER.

Whose portrait studies look uncommonly well.

At Christmas time the gift of a portrait creates more interest than any other gift.

KEEP OUT THE COLD

Give your Self-starter a fair chance.

Give yourself a fair chance.

A Gas Heater in the Garage will do
the first

A Gas Fire in the bedroom will do
the second.

Both can be hired from the
Colchester Gas Company.

A few shillings spent on warming
your Garage may save the cost
of a new battery.

A few shillings spent in warming
yourself may ward off an illness.

ASK FOR PARTICULARS—

THE COLCHESTER GAS CO.

43, HEAD STREET.



THE BELLS

of

"LITTLE DAN"

Are Calling You to
Visit the
HEADGATE
THE BULL
THE ESSEX ARMS.

FOR REFRESHMENT.

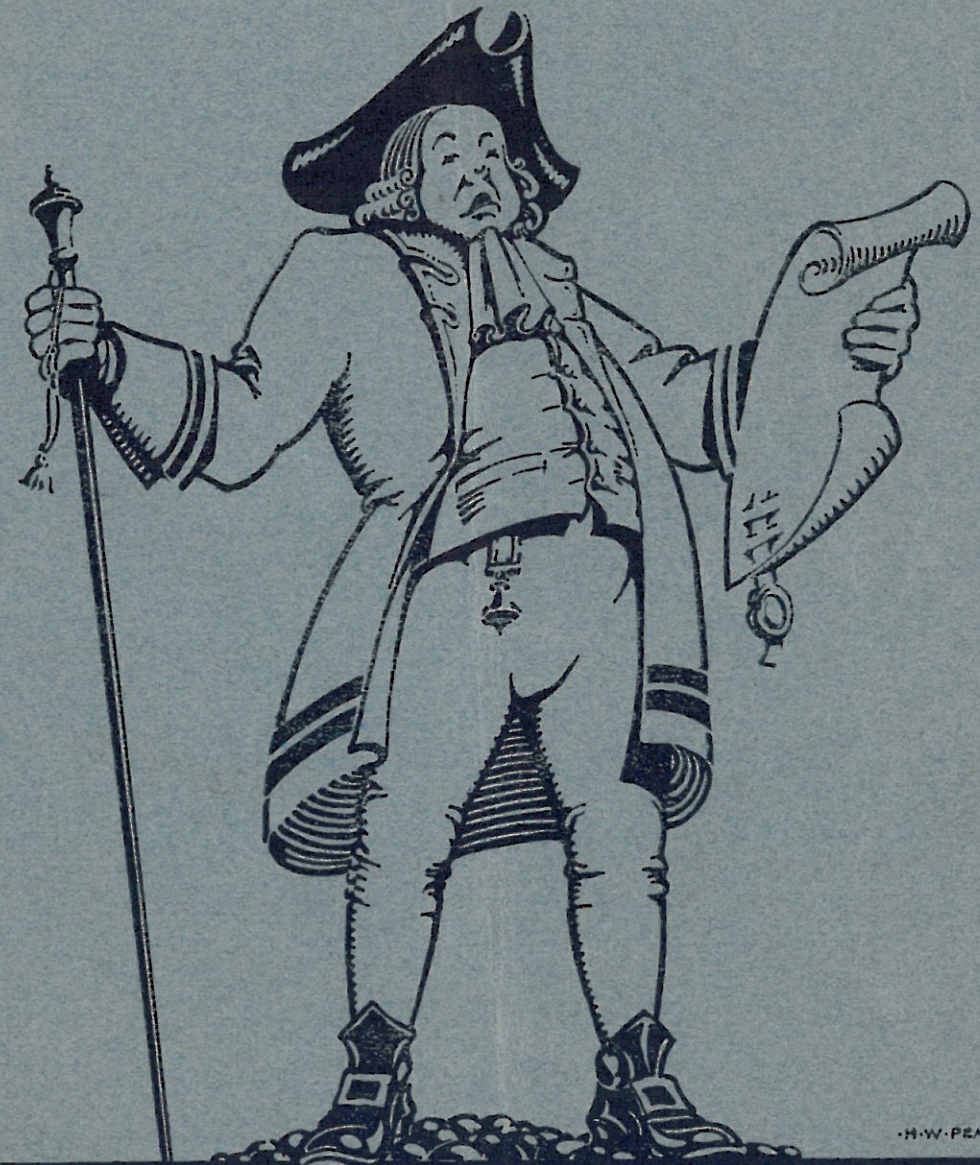
There's Just Time During The Intervals



Daniell & Sons Breweries Ltd.

Benham and Co. Ltd., Printers, 24, High Street, Colchester.

LES CLOCHES DE CORNEVILLE



H.W. PEARCE.

Presented by the Colchester
Amateur Operatic Society 1931