

Colchester's Most Modern Rendezvous

THE
ROMAN SNACK BAR

At the Signe of
THE GEORGE
COLCHESTER

Come and have a bite after the pictures in this most
modern of genuinely ancient Thirteenth Century
SNACK BARS

IN THE NEW RESTAURANT :
TABLE D'HOTE DINNERS SERVED DAILY
From 7.0 p.m. till 9.30 p.m. Per 4/- head.

On Wednesdays and Saturdays THE GEORGIAN TRIO will play a Selection of
Music from 7.30 p.m. to 10 p.m.

DANIELL & SONS' BREWERIES, LIMITED

LITTLE DAN ALE
(LIGHT AND DARK)

LITTLE DAN STOUT

SPECIALITY **NIPS XXXX**





POPULAR COUNTY JOURNAL
38, HEAD STREET, COLCHESTER.

ESTABLISHED 1858

Famous for its

NOTICES OF MUSIC AND THE DRAMA
CHAPTERS OF COLCHESTER'S HISTORY

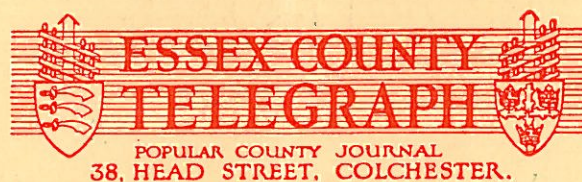
LOCAL ANTIQUARIAN NOTES

SPORTS PAGE

AGRICULTURAL COMMENTS

COMPREHENSIVE NEWS SERVICE

*A special critical notice of the performance of
"Merrie England" by the Colchester Operatic
— Society will appear in its columns —*



POPULAR COUNTY JOURNAL
38, HEAD STREET, COLCHESTER.

THE
**Essex & Suffolk Equitable
Insurance Society Ltd.**

ESTABLISHED OVER 130 YEARS.



**FIRE & ACCIDENT
INSURANCE.**

Head Office:—THE FIRE OFFICE,
COLCHESTER.

LOVE WAS MEANT TO MAKE US GLAD

- NEVER SO TRUE
AS AT CHRISTMAS.
- ACHIEVED.
- BY USEFUL GIFTS
OBTAINABLE
IN GREAT VARIETY

at

PIPERS (COLCHESTER) LTD., COLCHESTER

The Colchester Operatic Society

present

EDWARD GERMAN'S

MERRIE ENGLAND

BOOK BY BASIL HOOD

A COMIC OPERA IN TWO ACTS

By arrangement with Chappell & Co., Ltd.

AT

THE PLAYHOUSE :: COLCHESTER

Associated British Cinema. Mr. Gilbert Boddy, Resident Manager.

ON

MONDAY, NOVEMBER 25th, 1935

and all the week at 7.45

Matinees : Thursday and Saturday at 2.15
(Nov. 28th) (Nov. 30th)

Carriages and Late Buses at 10.45

Photographs by The West End Studio.

Cover Design by H. W. Pearce.

Costumes, etc., by B. J. Simmonds & Co., of London.

Scenery by Capes of Chiswick.

Perruquiers : Arthur Charrington and Miss E. M. Clarke, of London.

The Essex County Telegraph, Head Street, Colchester.

JACKLINS

For Your
Morning Coffee

Luncheons

Afternoon
Teas

High Street, Colchester

TEL. 2157

MERRIE ENGLAND, 1935.



JOHN FOWLER
"EARL OF ESSEX"

GEOFFREY E. LEE
"SIR WALTER RALEIGH"

DOROTHY WRIGHT
"BESSIE THROCKMORTEN"

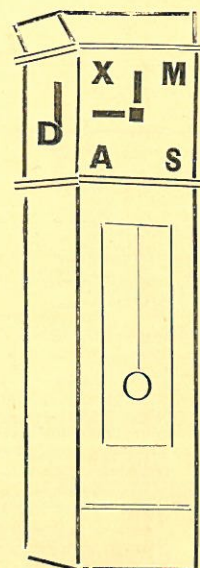
MARY DONOVAN
"QUEEN ELIZABETH"

ERIC H. THORNTON
"WALTER WILKINS"

WHY NOT
BAYLISS
FOR YOUR
PRESENTS



TIME IS FLYING
SHOP EARLY



TOBACCOS
CIGARETTES
CIGARS

AGENTS FOR
DUNHILL AND
LOEWE BRIARS

BAYLISS
THE
TOBACCONIST
AT YOUR SERVICE

PIPES
POUCHES
LIGHTERS

No. 2, High St.
Colchester

Top of the Town.

CIGARETTES IN FANCY BOXES
NOVELTIES AND EVERY
REQUISITE FOR THE SMOKER

OH
HE HAS A
MARVELLOUS
SELECTION



Colchester Operatic Society

PRESIDENT : HIS WORSHIP THE MAYOR
(Coun. The Rev. F. E. Macdonald Docker, M.A., B.D.)

ELEVENTH SEASON

Vice-Presidents—B. H. Kent, Esq., J.P.; Major J. Oxley Parker; Mrs. E. Bailey; F. O. Hutton, Esq.; Oswald Lewis, Esq., M.P.; T. Lorkin Daniell, Esq.; Alfred Crowther, Esq.; N. Clifford Goody, Esq.; E. A. French, Esq.; Councillor W. H. Shephard; Mrs. R. E. Bland; A. W. Air, Esq.; Alderman A. Owen Ward, J.P.; Mrs. M. G. Cant; Captain P. Mumford; C. Lupton Fielden, Esq.; Alderman E. A. Blaxill, J.P.; E. H. Turner, Esq., J.P.; Mrs. A. H. Emons; Dr. L. Penrose; C. F. Bland, Esq.

Guarantors—C. J. Aldis, W. O. L. Archer, Mrs. D. A. Asherwood, Mrs. E. Bailey, Miss D. Bailey, Mrs. Bayliss, Miss V. Bonner, Miss C. Bowles, Miss D. Brown, Mrs. O. A. Chambers, Miss M. Chattey, Mrs. Wasey Chopping, F. J. Collinge, F. F. Cork, Miss E. Coupe, A. H. Cross, Miss G. Davies, D. J. Donovan, Miss W. Everett, H. E. Facer, Miss B. W. Fielden, C. L. Fielden, Mrs. C. L. Fielden, H. Fielden, Mrs. H. Fielden, Miss E. Foote, J. H. Gilling, Mrs. J. H. Gilling, A. Godbold, Miss M. K. Goldsmith, N. C. Goody, W. A. Greenwood, C. F. Jeffery, N. Joscelyne, B. H. Kent, G. C. Loyd, Miss I. Macrae, Miss A. Malster, E. H. Moll, H. L. Neal, Miss E. Palmer, J. Oxley Parker, H. W. Pearce, Mrs. H. W. Pearce, Miss E. M. Peck, A. W. Piper, Miss D. Piper, S. Powell, R. G. Prewett, W. H. Shephard, Mrs. B. Thornton, W. W. Townsend, Miss J. Turner, F. C. Yates, Mrs. F. C. Yates, J. P. York.

Executive Committee—Mrs. C. W. Chambers, Mrs. W. Everett, Mrs. W. W. Townsend, Duncan W. Clark, F. J. Collinge, F. F. Cork, T. Morley Fripp.

HON. MUSICAL DIRECTOR	H. E. FACER
HON. ACCOMPANIST	MYFANWY POWELL
PRODUCER	ARTHUR LUCAS
HON. SECRETARY AND TREASURER	W. W. TOWNSEND
HON. BUSINESS MANAGER	A. W. PIPER
HON. STAGE MANAGER	T. M. FRIPP
HON. ASSISTANT SECRETARY	DORIS M. PIPER
HON. SOLICITOR	F. J. COLLINGE

A FOREWORD TO "MERRIE ENGLAND."

THE STORY.

Picture an Elizabethan setting depicting in its opening the May Day revels with the May Queen and her retinue. The plot is mainly concerned with the love affairs of Sir Walter Raleigh and Bessie Throckmorton, and the rivalry between Raleigh and Essex for the favour of Queen Elizabeth. Essex is engaged in plotting against Raleigh, and to this end obtains from Jill-all-Alone a love letter written by Raleigh to Bessie. Bessie, to save her lover, discloses to Queen Elizabeth her love for Raleigh, and declares that Essex is jealous. The May games proceed in the presence of Queen Elizabeth, the humour being provided by Walter Wilkins, a strolling player, and his companion, Silas Simpkins. Jill-all-Alone is accused of witchcraft, and appeals to Wilkins for protection, but this avails her little, for she is condemned to death, Bessie is imprisoned, and Raleigh, as a result of Essex's activities, banished from Court. In the second Act Jill has retreated to the forest, where, by means of a secret passage leading from the Castle, she has aided Bessie's escape. Queen Elizabeth has arranged to meet an apothecary in the forest to procure a poisonous drug to administer to Bessie. Raleigh, disguised as a forester, overhears the plot, but the supposed apothecary turns out to be a friend in disguise. Essex, realising that his favour with Elizabeth will be enhanced when Raleigh marries Bessie, now works to obtain a pardon for the lovers and for Jill. This is achieved by the subterfuge of a supposed apparition of "Herne the Hunter," which is said to appear only when the sovereign contemplates a crime. The subterfuge succeeds, the Queen is terrified and pardons the offenders, the play ending with a joyous representation of Robin Hood's wedding.

Dress

Practical Smartness for the Morning

Chic Harmony for the Afternoon

Elegance in the Evening

Rogers Bros.,
Pelham's Lane,
Colchester.

Telephone 3297

The Musical Numbers

(Silence is requested during the playing of the Overture)

OVERTURE ORCHESTRA

Act 1.

1. Opening Chorus "Sing a down, a down, a down."
2. Duet (*Long Tom* and *Big Ben*) .. "We are two proper men."
3. Song (*Jill* with Chorus) .. "Oh, where the deer do lie."
4. Song (*Wilkins*, Chorus and Dance) .. "I do counsel that your playtime."
5. Song (*Raleigh* and Chorus) .. "That every Jack should have a Jill."
6. Quintet (*May Queen*, *Kate*, *Raleigh*,
Wilkins and *Long Tom*) .. "Love is meant to make us glad."
7. Ballad (*Bessie*) .. "She had a letter from her love."
8. Duet and Dance (*Raleigh* and *Bessie*) "When true love hath found a man."
9. Song (*Essex* with Chorus) .. "Who were the Yeomen?"
10. Entrance of *Queen Elizabeth* .. "God save Elizabeth."
11. Song (*Elizabeth* with Chorus) .. "O peaceful England."
12. Song (*Wilkins* with Chorus) .. "King Neptune sat on his lonely throne."
13. Finale "It is a tale of Robin Hood."

Act 2.

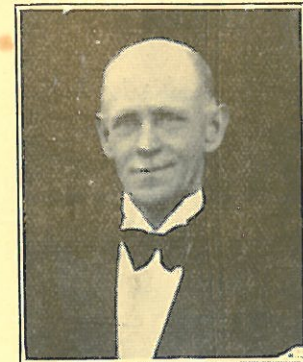
14. Opening Chorus with Solo (*Jill*) .. "The month o' May has come to-day."
15. Quartet (*Bessie*, *Jill*, *Big Ben*, *Long Tom*) .. "In England, Merrie England."
16. Duet (*Wilkins* and *Simkins* with Chorus) "The big brass band."
17. Duet (*Jill* and *Raleigh*) .. "It is the merrie month of May."
18. Chorus and Dance .. "The Queen o' May is crowned to-day."
19. Song (*Raleigh*) .. "Dan Cupid hath a garden."
20. Ensemble .. "Two merry men a-drinking."
21. Song (*Bessie*) .. "O who shall say that love is cruel"
22. Song (*Essex*) .. "When Cupid first this old world trod."
23. Masque of St. George and the Dragon Egyptian Dance.
24. Chorus with Solos (*Wilkins* and *May Queen*) .. "Oh! here's a to-do to die to-day."
25. Finale "'Now who'll come?' said Robin Hood."



ARTHUR LUCAS
THE PRODUCER

MERRIE ENGLAND

A COMIC OPERA IN TWO ACTS



H. E. FACER
HON. MUSICAL DIRECTOR

Cast

THE EARL OF ESSEX	JOHN FOWLER
SIR WALTER RALEIGH	GEOFFREY E. LEE
WALTER WILKINS	ERIC H. THORNTON
SILAS SIMKINS	H. G. EVANS
LONG TOM	NORMAN JOSCELYNE
BIG BEN	F. F. CORK
THE QUEEN'S FOOL	SPENCER C. BUGG
A BUTCHER	GRANVILLE OFFORD
A BAKER	H. W. PEARCE
A TINKER	S. J. MARSH
A TAILOR	REG. G. PREWETT
A LORD	F. C. YATES
FIRST ROYAL PAGE	PHYLLIS YATES
SECOND ROYAL PAGE	GLADYS FACER
QUEEN ELIZABETH	MARY DONOVAN
BESSIE THROCKMORTEN	DOROTHY WRIGHT
JILL-ALL-ALONE	DORIS BAILEY
THE MAY QUEEN	PHYLLIS BAKER
MARJORY	MARY ELSON, M.A.O.D.(Inter.)
KATE	OLIVE CHAMBERS
LADY-IN-WAITING	WINIFRED EVERETT

Bargemen :	Heralds :	Trumpeters :	Beefeaters :
R. Blunt	C. W. M. Nash	Peter Neale	W. A. Greenwood
B. G. Brown	C. Thurston	Peter Ray	E. Irvine

CHORUS, LORDS, LADIES, TOWNSFOLK.

Chorus

BERYL ALDIS	EDNA ELMER	EVA PALMER	H. FIELDEN
DORA ASHERWOOD	ENA FOOTE	MURIEL PEARCE	J. H. GILLING
VERA BONNER	WINIFRED FIELDEN	MURIEL PECK	A. GODBOLD
CASSIE BOWLES	ELSIE FIELDEN	DORIS PIPER	T. HAMMOND
DOROTHY BROWN	ETHEL FACER	GLADYS ROGERS	C. JEFFREY
MAUREEN BOWEN-	MOLLY GOLDSMITH	BLANCHE THORNTON	R. A. KNIGHT
COLTHURST	MARGARET GILLING	EILEEN THOMAS	G. C. LOYD
GRACE BURNETT	MARJORIE JONES	L. ARCHER	K. V. OXBORROW
MARJORIE CHATTEY	ADELAIDE MALSTER	J. BOON	H. E. NEAL
ELIZABETH COUPE	INA MACRAE	R. D. CIVIL	J. P. YORK
GLADYS DAVIES	DOROTHY ORRIN	C. L. FIELDEN	K. ROWLAND

Orchestra

VIOLINS—	DOUBLE BASS—	HORN—
W. JACOBS (Leader)	G. JANTZEN	G. TURNER
JOAN CANT, A.R.C.M.	FLUTES—	TRUMPETS—
JACK GODBOLD	H. D. DOVE	D. BARCLAY
JOAN RANDOLPH-SYMONS	B. WOODHAM	G. LEATHERDALE
HILDA SMITH	OBOES—	TROMBONE—
J. DOWRICK	H. BAKER	F. GROOMBRIDGE
VIOLAS—	F. HART	TYMPANI, ETC.—
J. J. SMITH	CLARIONETS—	T. E. GORDON
P. C. BOUTELL	J. BARRETT	HARP AND PIANO—
'CELLOS—	C. YOUNG	MYFANWY POWELL
J. WRIGHT	BASSOONS—	
MAY JONES	H. O. COUSINS	
CAPT. F. HAMILTON	J. MCCORMACK	

Scenes

Act I.—The banks of the Thames opposite Windsor.

Interval of Fifteen Minutes.

Act II.—A glade in Windsor Forest.

Out of consideration for the vocalists it is hoped that members of the Audience will refrain from SMOKING.

Let the Laundry do it all

Studied Care gives More Wear

FULLY FINISHED or HOME SERVICE

also DYERS AND CLEANERS

- ☐ Most Modern and Hygienic Conditions
- ☐ 'Phone or Post Card, our Vans will Call
- ☐ Call and Inspect any Day

Receiving Offices :

14, Upper Brook Street,
IPSWICH,
'Phone 3590

51, Connaught Avenue,
FRINTON.
'Phone 377.

151a, High Street,
COLCHESTER.
'Phone 3409.

Agencies :

CLACTON WALTON
BRIGHTLINGSEA
ROWHEDGE
MALDON
WEST MERSEA
TIPTREE
HALSTEAD
TOLLESBURY
WITHAM
EARLS COLNE
Etc., Etc.

**COLCHESTER STEAM LAUNDRY
AND CARPET BEATING CO. LTD.**

Works : Ipswich Road, Colchester

'Phone : Colchester 3780

MERRIE ENGLAND, 1935.



DORIS BAILEY AS "JILL-ALL-ALONE"

ACKNOWLEDGMENTS.

The Committee desire to express grateful thanks to:—

- H. E. Facer, Hon. Musical Director, for his invaluable services, patience, and under all circumstances his courtesy.
- Mrs. M. Powell for her untiring and valuable work as Hon. Accompanist.
- Miss Harley, Colchester School of Dancing, for her very valued services in the arrangement and tuition of the Dances.
- The Vice-Presidents for their interest and practical support.
- The Lady Programme Sellers.
- The Members of the Orchestra.
- H. Pearce (for the eleventh time), the original Programme Cover Design.
- Mr. Gilbert Boddy and the Playhouse Staff for their loyal support.
- "George," the Original C.O.S. Call Boy (a terror to the unready).
- And to all those who have helped to make the Production a success.

FOR ALL
DRESS FABRICS

WEBB & WALKER
15, CROUCH STREET
COLCHESTER

BUTTERICK
VOGUE and
PICTORIAL REVIEW
Paper Patterns

BETHELL & CLARK

(G. CLARK, F.B.O.A., F.I.O.)

Consulting



Opticians.

11A, HIGH STREET, COLCHESTER

(AND AT CLACTON-ON-SEA)

FOR

Sight Testing and Ophthalmic Examinations.

(National Health Insurance Opticians).

'PHONE 3892.

MERRIE ENGLAND, 1935.



F. F. CORK
"BIG BEN"

NORMAN JOSCELYNE
"LONG TOM"

"We are two proper men."



ERIC H. THORNTON
"WALTER WILKINS"

"Who speaks my name?"

MANN BROS.

Radio and Musical Instrument Dealers,

123, HIGH ST., COLCHESTER

'PHONE 2783

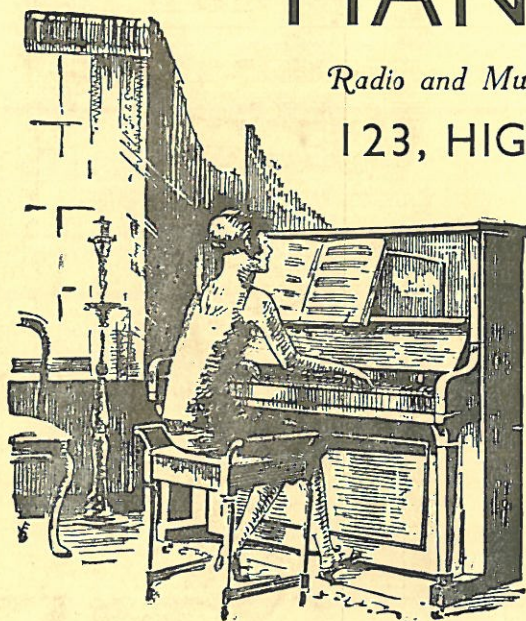
COLCHESTER'S LEADING
SPECIALISTS IN
PIANOS, PIANO-
ACCORDIONS, RADIO,
RADIOGRAMS, MUSIC
AND RECORDS.

CATALOGUES POST FREE.

*We Cater for EVERY Musical
Requirement.*

Pianoforte Tunings. Radio Service.

Hear your Records in our
Comfortable Audition Rooms.



SIMKIN

HOUSE FURNISHER

NORTH HILL :: :: COLCHESTER

For USEFUL
CHRISTMAS PRESENTS



FIRESIDE CHAIRS. DRAUGHT SCREENS.
NESTS OF TABLES. BRIDGE CHAIRS . .
WALL MIRRORS. . CUT GLASS

ANTIQUES OF ALL DESCRIPTIONS.
FURNITURE. . . SPORTING PRINTS.
ORIENTAL PLATES & VASES. PEWTER.

Telephone 3558

MERRIE ENGLAND, 1935.



NORMAN JOSCELYNE
"LONG TOM"

PHYLLIS BAKER
"THE MAY QUEEN"

"I would not harm thee or any woman."



ERIC H. THORNTON
"WALTER WILKINS"

H. G. EVANS
"SILAS SIMKINS"

"Concerning the Dragon which we play."

JUDGE A MAN BY THE COMPANY HE KEEPS !

*We are in good company with the following—
some of our agencies :—*

OVERCOATS

AQUASCUTUM
SIMPSON

FLANNELS

DAKS
HENLEY

HATS

BATTERSBY
HENRY HEATH

UNDERWEAR

WOLSEY
ÆRTEX

A. Owen Ward, Fourteen, High Street, Colchester
Tel. Two-Eight-Seven-Two

Wm. SMITH (Fruiterers) Ltd.

17, St. Botolph's Street, Colchester.

TELEPHONE 2277.



Artists in Natural Flowers.

All kinds of Emblems
made to order.

A CHOICE SELECTION OF FRUITS.

MERRIE ENGLAND, 1935.



GEOFFREY E. LEE
"SIR WALTER RALEIGH"

MARY DONOVAN
"QUEEN ELIZABETH"

JOHN FOWLER
"EARL OF ESSEX"

CAMERA STUDY



"THE SPEED NYMPH"

Unique Studies Produced by

OSCAR WAY

Head Street, Colchester

'PHONE 3870

Come NOW for CHRISTMAS PORTRAITS

"Gas is sent to make us glad.
Heigh-ho! Heigh-ho!"

sings Mr. THERM

"And with truth, too. Nobody can be glad or merry when housework is on top of them all the time. Can they? I ask you!

Gladness comes with proper leisure for rest and recreation. And that's where I come in.

Do you know, for example, that one of my automatic gas water heaters will produce all the hot water you and your family need without calling on you to do even one hour's work in the year?

Do you realise that my automatic oven-heat control lets the cooker do the cooking without any attention from you?

Have you seen my new self-lighting gas fires? My automatic refrigerators? My switch-controlled lighting?

Every one of the household appliances now on view at the Gas Showrooms saves labour, increases comfort, adds to leisure. Come up and see me (and them) sometime. It will pay you.



Mr. THERM

FOR MERRIE ENGLAND

THE COLCHESTER GAS COMPANY

Showrooms: 43, HEAD STREET.

TELEPHONE: 3718