

Hatfields Winter **SALE 08** **NOW ON!**



One of East Anglia's Largest Quality Furniture Stores

Pearl Road • Stanway • Colchester • Essex • CO3 0LA
Freephone: **0800 023 2174** Website: www.hatfields.com/cos



OVER **80** DINING SETS

OVER **60** BEDS

OVER **90** SUITES

1000's OF CARPETS, RUGS & FLOORING... ALL ON DISPLAY!

MASSIVE SAVINGS

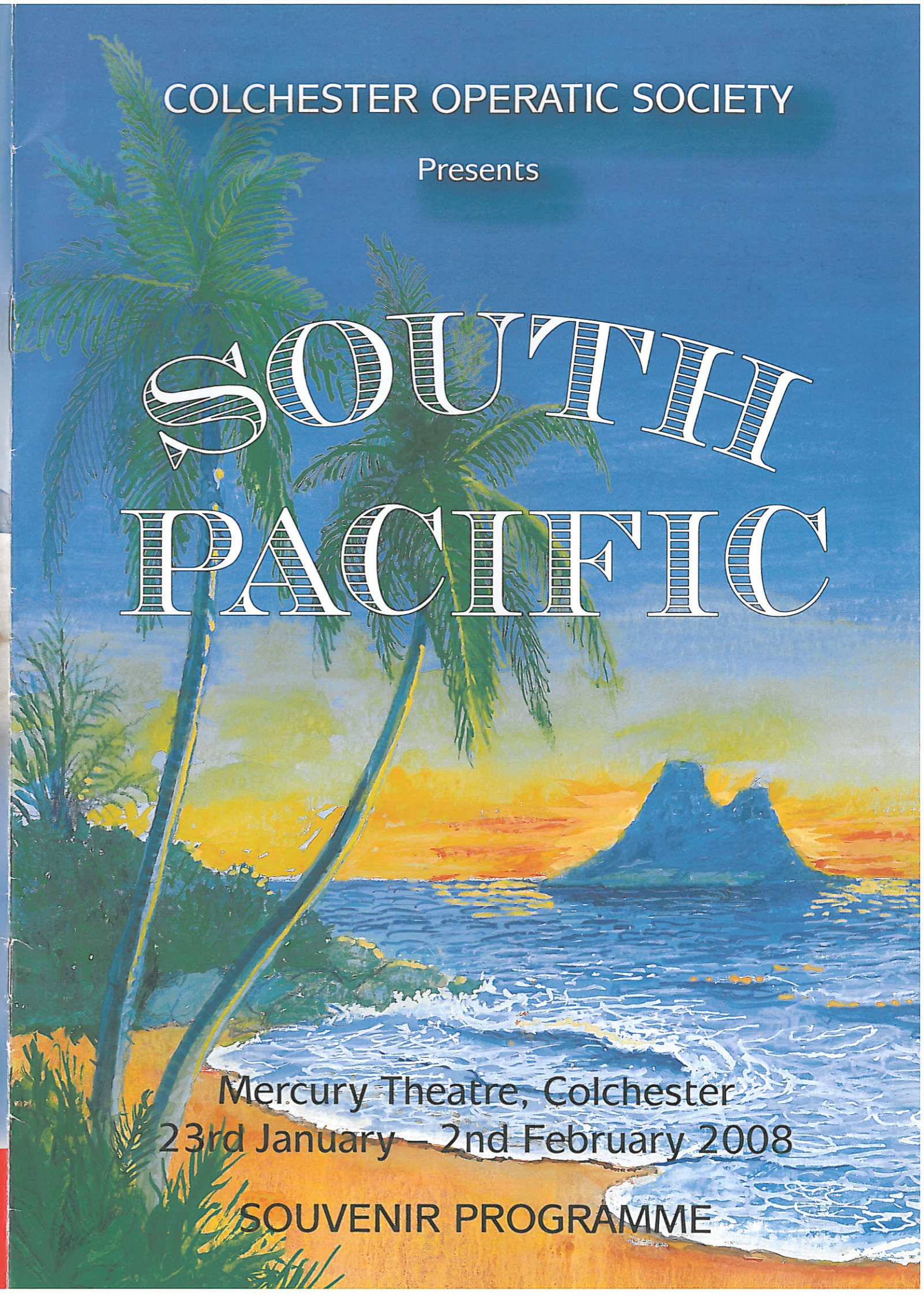
THROUGHOUT THE STORE • WITH UP TO 40 MONTHS CREDIT*

*Subject to status. Written details available upon request. Please refer to our website for instructions on how to find us.

COLCHESTER OPERATIC SOCIETY

Presents

SOUTH PACIFIC



Mercury Theatre, Colchester
23rd January – 2nd February 2008

SOUVENIR PROGRAMME

AVEDA

the art and science of pure flower and plant essences



Colchester Operatic Society

www.colchesteroperaticsociety.co.uk
Affiliated to the National Operatic and Drama Association



Proudly Presents

SOUTH PACIFIC

by Rodgers & Hammerstein

THE PRODUCTION TEAM



DIRECTOR
Caroline Fritz



MUSICAL DIRECTOR
Peter Snell

PRESIDENT
John Enfield

CHAIRMAN
Michael Spurgeon

SECRETARY
Liz Thorne

ASSISTANT DIRECTOR
Sally Hammond

LIGHTING DESIGN
Jim Bowman

SOUND DESIGN
Martyn Hunt

WARDROBE MANAGER
Beryl Balls

PROPERTIES MANAGER
Lisa Lovelock

FRONT OF HOUSE MANAGER
Liz Thorne

PUBLICITY AND PROGRAMME
Barbara Pears
Nathan Crame

FRONT COVER DESIGN
Ken Smith

Please note that the videoing, photography or sound recording of any part of this performance is not permitted.
PLEASE TURN OFF ALL MOBILE PHONES AND ANY OTHER BLEEPING DEVICES!

CINNAMON BROWN

CONCEPT SALON & SPA

Tel: 01206 366686

142 High Street, Colchester, CO1 1PG www.cinnamonbrown.co.uk

A MESSAGE FROM OUR CHAIRMAN

May I extend a warm welcome to you all on this cold winter's day and allow the company of "South Pacific" to whisk you away to the golden sands, the blue seas and sky, the gently swaying palms of a South Pacific island for the next few hours. This Rodgers and Hammerstein musical with its dramatic story line, its humour and memorable songs add up to one of the best known shows.

For this production we have a new director, Caroline Fritz. Caroline has been a member of the Society for some while now and you may have seen her in our last production of "Camelot" when she played Queen Guenevere. She asked us if she could try her hand at directing this show and we said yes. She is ably assisted by Sally Hammond and our Musical Director, Peter Snell, who have directed and guided the cast through the show to the performance you are about to see now.

I would like to take this opportunity to congratulate the CO2 team on their magnificent production of "We Will Rock You" at this theatre... A standing ovation at the end of every performance is the highest compliment an audience can give to a cast. It was also a record for the Society - a sell-out - not a seat to be had in the theatre.

The Society is always on the lookout for new members to swell the ranks in all departments so if you have a talent for singing, dancing or back stage work etc we would like to hear from you by contacting Colin Thorne our Membership Secretary. Details are at the back of this programme. That's the end of my chat, so sit back in your seat and enjoy the enchantment of "South Pacific" and don't forget to tell your friends.

Michael Spurgeon, Chairman COS

THE STORY OF "SOUTH PACIFIC"

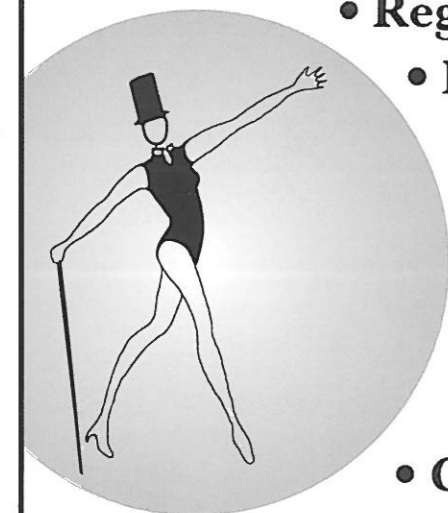
Based on the Second World War best seller by James Michener, "Tales From The South Pacific" the musical centres on the romance between exiled French planter, Emile de Becque and Navy Nurse, Nellie Forbush and a liason between Lt. Joseph Cable and Bloody Mary's daughter Liat. Emile and Joseph are sent on a secret mission to an island occupied by the Japanese. The show features well-loved numbers such as "Bali Ha'i", "Some Enchanted Evening", "Gonna Wash That Man Right Outa My Hair" and "There Is Nothing Like A Dame". The show provides a melodic and colourful evening's entertainment.

Dancewear Specialists

- Regulation Dance and Shoe Wear
- Pointe Shoe Fitting Service
- Ballroom Shoes
- Stage Make-up
- Fitness Wear
- Gifts
- Mail Order
- Children's Fancy Dress Hire

BODY & SOLE
COLCHESTER 01206 564606

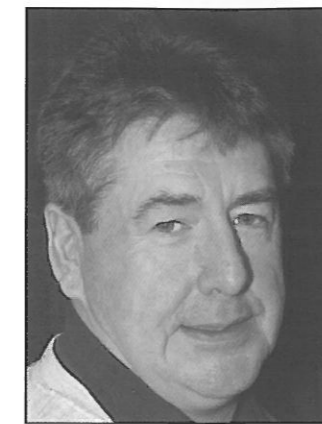
43 St. John's Street, Colchester, Essex CO2 7AD. www.bodynsole.co.uk



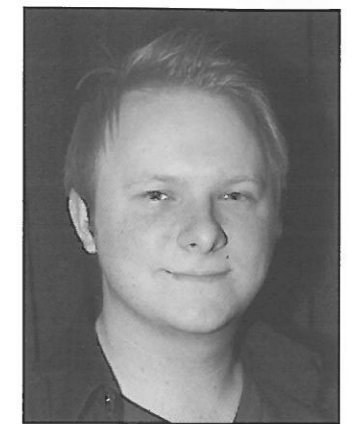
THE CAST



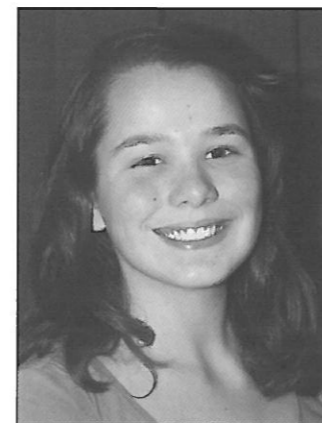
Graine Ivell



John Davies



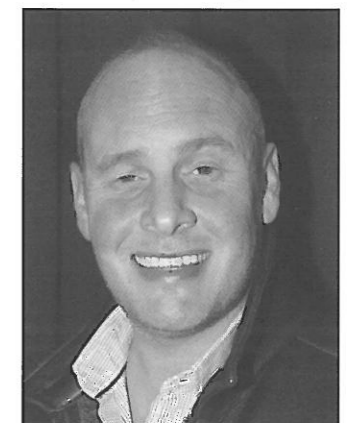
James Fillery



Jenna Saiz



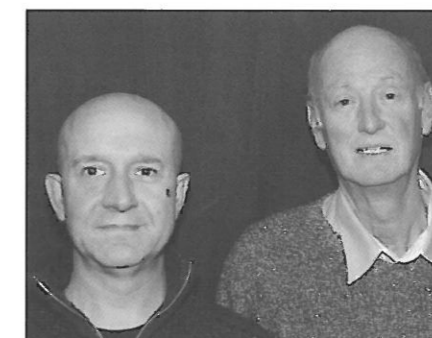
Lydia Clough



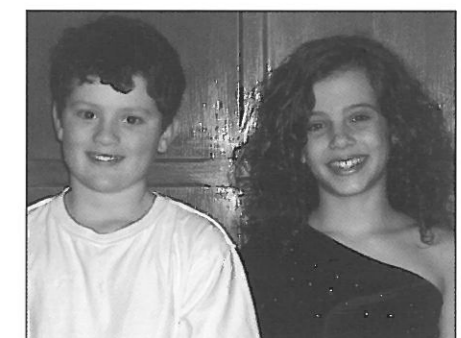
Kevin Richard



Ben Fusi
& Ali Fusi



Graham Bowden
& Nick Clough



Samuel Pace &
Anna Andreas



The Boys



The Girls

ACT I

The action of the play takes place on two islands in the South Pacific during World War II. There is one week's lapse of time between the two Acts.

'OVERTURE'

Scene 1: The Terrace of Emile de Becque's Plantation Home

'DITES-MOI' Ngana and Jerome

'A COCKEYED OPTIMIST' Nellie

'TWIN SOLILOQUIES' Nellie and Emile

'SOME ENCHANTED EVENING' Emile

Reprise: 'DITES-MOI' Ngana and Jerome

Scene 2: Another Part of the Island

'BLOODY MARY' Sailors, Seabees and Marines

Scene 3: The Edge of a Palm Grove Near the Beach

'THERE IS NOTHIN' LIKE A DAME' Billis, Sailors, Seabees and Marines

'BALI HA'I' Bloody Mary

Scene 4: The Company Street

Scene 5: Inside the Island Commander's Office

Scene 6: The Company Street

Scene 7: The Beach

'I'M GONNA WASH THAT MAN RIGHT OUT-A MY HAIR' Nellie

Reprise: 'SOME ENCHANTED EVENING' Emile and Nellie

'A WONDERFUL GUY' Nellie and Nurses

Scene 8: Inside the Island Commander's Office

Scene 9: Another Part of the Island

Reprise: 'BALI HA'I' French and Native Girls

Scene 10: Inside a Native Hut on Bali Ha'i

'YOUNGER THAN SPRINGTIME' Cable

Scene 11: Near the Beach on Bali Ha'i

Scene 12: Emile's Terrace

'FINALE ACT I' Emile

ACT II

'ENTR'ACTE'

Scene 1: A Performance of "The Thanksgiving Follies"

'DANCE' Nellie, Nurses and G.I.'s

Scene 2: Backstage at "The Thanksgiving Follies"

'HAPPY TALK' Bloody Mary and Liat

Scene 3: The Performance Resumes, as in Scene 1

'HONEY BUN' Nellie, Billis and Ensemble

Scene 4: Backstage, as in Scene 2

'YOU'VE GOT TO BE CAREFULLY TAUGHT' Cable

'THIS NEARLY WAS MINE' Emile

Scene 5: Another Part of the Island

Scene 6: The Radio Shack

Scene 7: Another Part of the Island

Scene 8: The Radio Shack

Scene 9: The Company Street

Scene 10: The Beach

Reprise: 'SOME ENCHANTED EVENING' Nellie

Scene 11: The Company Street

Scene 12: Emile's Terrace

'FINALE ULTIMO' Emile, Nellie, Ngana and Jerome



"Some enchanted evening"

"There is nothin' like a dame -
nothin' in the world"



"Dites-Moi"



"Younger than Springtime"



"There is nothin' you can name
that is anythin' like a dame"



"I'm gonna wash that man right
out-a my hair"



SOUTH PACIFIC THE CAST



Character	Name	The Boys	The Girls
Emile de Becque	John Davies	Rikki Hammond	Rebecca Buckle
Nellie Forbush	Graine Ivell	Ryan Mazlan	Valentine Cavanagh-White
Lt. Joe Cable	Jamie Fillery	Colin Thorne	Katie Chan
Luther Billis	Kevin Richard	Steven Chan	Sally Leung
Simone	Barbara Ryan	Shane Diggins	Kelly Marven
Lt. Buzz Adams	Nathan Crame	Steven Knight	Siobhan O'Shea-Warner
Stewpot	Sean Walsh	David Moye	Ayla Hassan
Professor	David Moye	Sam Pilkington	Amy Green
Bloody Mary	Lydia Clough	Ken Houghton	Clare Jones
Liat	Jenna Saiz		Emma Dagleish
Captain Brackett	Nick Clough		Clare Edwards
Harbison	Graham Bowden		Teresa White
McCaffery	Sam Pilkington		
Jerome	Samuel Pace Ben Fusi		
Ngana	Anna Andreas Ali Fusi		



...Creative Thinking
Effective Printing...

Masterprint
Units D-E Chandlers Row
Port Lane Colchester
Essex CO1 2HG
Telephone: 01206 860405
Facsimile: 01206 799068
Email: info@masterprint.co.uk

Design
Digital Print
Traditional Litho Print
Stock Holding
Photography
Copy Writing
Web Design, Build
and Maintenance
Internet Marketing
Direct Mail using Mailsort
and Press-Stream
Laser Personalisation
Reprographics
Customer Training

www.masterprint.co.uk

COLCHESTER GARRISON OFFICERS CLUB

FULL CATERING FACILITIES FOR
WEDDINGS & CONFERENCES UP TO 180
UNIQUE HISTORIC SETTING
AMPLE PRIVATE PARKING
MARQUEE AVAILABLE MAY - SEPT.

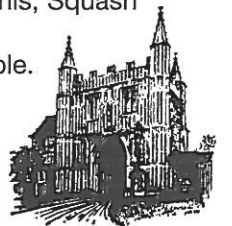
www.cgoclub.net
email: cgo.club@virgin.net

THE COLCHESTER GARRISON,
OFFICERS CLUB,
ST. JOHN'S GREEN,
COLCHESTER, ESSEX CO2 7EZ

NEW MEMBERS ALWAYS WELCOME

Facilities include:- Restaurant, Tennis, Squash
Courts, Snooker and Swimming.
Annual Family Membership Available.

COLCHESTER
(01206) 571108



PAST PRODUCTIONS

1925 Gondoliers	1951 The Student Prince	1971 Die Fledermaus	1989 Mikado
1926 Mikado	1952 Harmony Hill	1972 Mikado	My Fair Lady
1927 Princess Ida	1953 Show Boat	1973 Robert and Elizabeth	1990 The Pajama Game
1929 Iolanthe	1954 Brigadoon	1974 Orpheus in the Underworld	The Music Man
1930 Yeoman of the Guard	1955 Pink Champagne	1975 The Merry Widow	1991 Fiddler on the Roof
1931 Trial By Jury & Pirates of Penzance	1956 Vagabond King	1976 My Fair Lady	1992 Oklahoma
Les Cloches de Corneville	1957 White Horse Inn	1977 The Great Waltz	1993 Kiss Me Kate
1932 Quaker Girl	1958 Summer Song	1978 Fiddler on the Roof	1994 Godspell
1933 Mikado	1959 The Merry Widow	1979 The King & I	Orpheus in the Underworld
1935 Gondoliers	1960 Song of Norway	1980 Show Boat	1995 Hello Dolly
Merrie England	1961 Naughty Marietta	1981 Hello Dolly	1996 Pirates of Penzance
1936 Duchess of Danzig	1962 The Dancing Years	1982 Camelot	1998 Me & My Girl
1937 Vagabond King	1963 Kismet	1983 Half a Sixpence	1999 Singin' in the Rain
1938 Country Girl	1964 The Most Happy Fella	1984 Brigadoon	2000 Sweet Charity
1946 The Beggar's Opera	1965 They Came to a City	1985 Guys & Dolls	2001 Half a Sixpence
1947 Tom Jones	The Student Prince	Carousel	2002 Carousel
The Arcadians	1966 Hay Fever	1986 Pirates of Penzance	2003 The King & I
1948 Waltz Dream	La Belle Helene	The Sound of Music	2004 Oliver
1949 New Moon	1967 Carousel	1987 South Pacific	2005 Crazy For You
1950 The Wind and Rain	Count of Luxembourg	Oliver	2006 My Fair Lady
The Desert Song	1969 Oklahoma	1988 The Desert Song	2007 Camelot
	1970 Kiss Me Kate	Annie Get Your Gun	

COLCHESTER OPERATIC SOCIETY

LIFE MEMBERS

Audrey Binge, Bing Binge
Katie Davey, Anne Dye
John Enfield, David Forder
Marion Spurgeon

VICE PRESIDENTS

Maureen Mills
Norman Ryan
Gwen Warburton
Maureen Yeats

For more details see our website www.colchesteroperaticsociety.co.uk
If you are interested in joining the Society please contact our Membership Secretary
Colin Thorne on 01206 262664



Telephone: 0870 770 2480
Website: www.noda.org.uk

NODA, The National Operatic and Dramatic Association, founded in 1899, is the main representative body for amateur theatre in the UK. It has a membership of some 2400 amateur/community theatre groups and 300 individual enthusiasts throughout the UK, staging musicals, operas, plays, concerts and pantomimes in a wide variety of performing venues, ranging from the country's leading professional theatres to village halls. Our Society is proud to be affiliated to NODA.

ACKNOWLEDGEMENTS

The Committee and Members of Colchester Operatic Society would like to express their thanks to all those who contributed to this production through their help in the Green Room, Front of House and Chaperoning the cast. Thanks to Dee Evans and The Mercury Staff, Colchester Garrison Officers' Club, The Arena Leisure Centre, St. Helena Hospice for use of their window and Chris Snow for dressing the window, Masterprint for Programme layout and production.
To all companies who have advertised in our programme.

PRODUCTION TEAM/SUPPLIERS

Stage Director
Michael Spurgeon

Stage Manager
Alan Larnar

Stage Crew
Terry Lyon
Bob Wilkinson
Donald White
Andrew Jeffers

Sound Operator
Philip Spurgeon

Production Sound
Chris Barrell

Sound Assistant
Aaron Noble
Trainee: Sam Brazier

Make up
Maggie Walton
Ken Smith
Members of Society

Wardrobe
Beryl Balls
Jo Read
Shirley Tindall
Maggie Walton

Prompt
Jason Norton

Properties Team
Lisa Lovelock
Karen Collins
Jessica Lovelock
Joseph Brazier
Ann Mills
Rhys McDowall
Robyn Armstrong

For the Mercury
Roger Mills-Lewis

Scenery
Scenic Projects Ltd

Costumes
Dereham Theatre
Costumes

Lighting Equipment
Richard Hinds Electrics

Sound Equipment
mm productions Ltd

Posters
Mail Boxes Etc.

Artwork
Ken Duffield

Programme
Masterprint

Cover Design
Ken Smith

DATES FOR YOUR DIARY

Witham Amateur Operatic Society "FOLLIES" By Stephen Sondheim April 19 – 26th 2008 Witham Public Hall	Colchester Operatic CONCERT 2008 Thurs/Fri 8/9th May Colchester Garrison Officers Club Sat 10th May Holmwood House School	Colchester Operatic CO2 "Summer Holiday" October 2008 at The Mercury Theatre	Colchester Operatic Society "FIDDLER ON THE ROOF" at The Mercury Theatre January 2009 Watch local press for details
--	---	---	---



Desmond Boyden Partnership

- CHARTERED SURVEYORS
- ESTATE AGENTS AND VALUERS
- PROPERTY LETTING AND MANAGEMENT

ASTON HOUSE, 57-59 CROUCH STREET
COLCHESTER, ESSEX, CO3 3EY

TEL: SALES (01206) 762244
TEL: LETTINGS (01206) 762276

www.boydens.co.uk

Other Offices at:
BRAINTREE – KELVEDON – SUDBURY
– FRINTON-ON-SEA –

Supporting your local theatre in the community.....

Spot on Photography

Professional Photographers of Distinction

Weddings

Inclusive of colour prints
and album
from only £160.00

Other inclusive wedding services
up to £490.00

Also
**PORTRAITS - SOCIAL &
COMMERCIAL PHOTOGRAPHY**

Very Early Booking Advised

For further information
please telephone
01255 814801

Email mcmc@spoton.fslife.co.uk

ENJOY THE PRODUCTION



PRAZSKY'S
COOLING SERVICES

Tel / Fax: (01206) 549962 Mobile: 07860 212129
www.staycooldirect.com



Fintry
Wines

www.fintrywines.co.uk

VISIT OUR NEW WEBSITE!

A bottle of rich, warming Gigondas from the Rhône Valley worth £7.99 free with every case ordered online in January 2008.

ALL your wine requirements on one easy to use site
PLUS free delivery in the Colchester postcode area.
FOR further details please call us on **01206 385779**

COME AND JOIN OUR MANY DELIGHTED PRIVATE AND CORPORATE CLIENTS!