

Hatfields WINTER SALE NOW ON!

Surround yourself with quality.
Staying in, is the new going out...



Stressless Arion - You can guarantee to make a big impact on your living space with this fabulous leather corner arrangement.

Exclusive voucher for Mercury Theatre customers!

5% OFF

Collections at Hatfields Main Store

(*Includes all products at Hatfields main store only. Can not be used in conjunction with any other offers, clearance items or on outstanding balances. Valid until 27th February 2011. One voucher per order only. Hatfields are not liable for any vouchers lost, stolen or damaged.)

Peartree Road • Stanway • Colchester • Essex • CO3 0LA
☎ 01206 765444 • www.hatfields.com

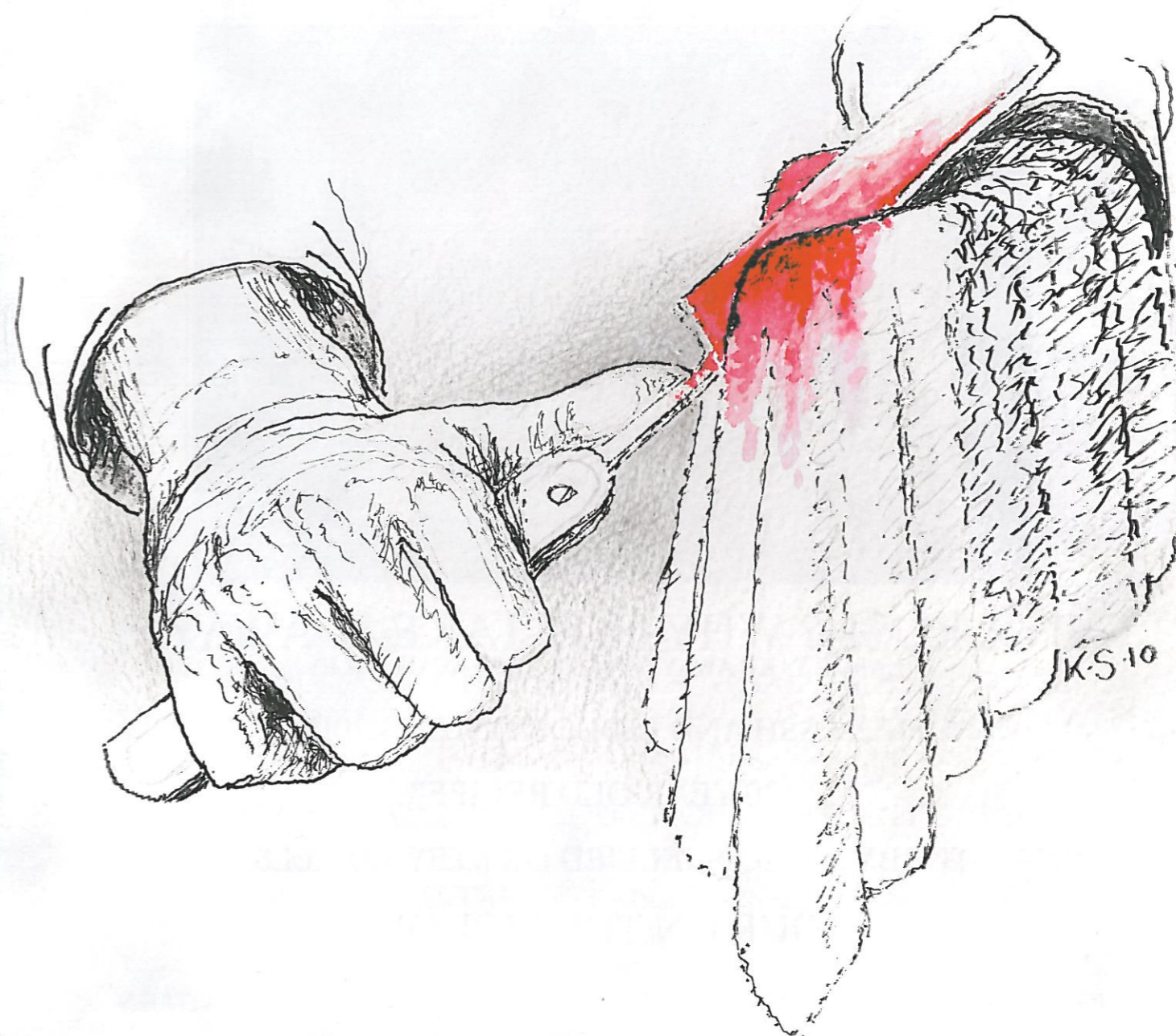
*Credit is subject to status. Written quotations available upon request.

COLCHESTER OPERATIC SOCIETY PRESENTS

Sweeney Todd

The Demon Barber of Fleet Street

A MUSICAL THRILLER



26 JANUARY - 5 FEBRUARY 2011

MERCURY THEATRE
COLCHESTER

TAYLORS

TRADITIONAL PIE AND MASH

NOW OPEN!

8 RED LION YARD, COLCHESTER

"COME IN FOR SOME HOT, TASTY PIE & MASH, AND RELAX IN OUR HOMELY RESTAURANT"



IN A RUSH? WHY NOT TAKE IT AWAY...
(LARGE TAKE AWAY ORDERS ALSO AVAILABLE)

PIE, MASH AND LIQUOR ONLY £3.70!!!

"120 YEAR OLD RECIPE"

TUBBY ISAAC'S JELLIED OR STEWED EELS

"POUR ON THE LIQUOR"

PRIVATE PARTIES, WEDDINGS AND EVENTS CATERED FOR, CALL FOR DETAILS

8 RED LION YARD - COLCHESTER - C01 1DX - 01206 560661

WWW.TAYLORSPIEANDMASH.CO.UK INFO@TAYLORSPIEANDMASH.CO.UK

follow us on
twitter



Find us on
Facebook



COLCHESTER OPERATIC SOCIETY

AFFILIATED TO THE NATIONAL OPERATIC AND DRAMATIC ASSOCIATION

PROUDLY PRESENTS

Sweeney Todd

The Demon Barber of Fleet Street

A MUSICAL THRILLER

MUSIC & LYRICS BY STEPHEN SONDHEIM

BOOK BY HUGH WHEELER

FROM AN ADAPTATION BY CHRISTOPHER BOND

ORIGINALLY DIRECTED BY HAROLD PRINCE

ORIGINALLY PRODUCED ON BROADWAY BY
RICHARD BARR, CHARLES WOODWARD, ROBERT FRYER,
MARY LEA JOHNSON, MARTIN RICHARDS IN ASSOCIATION WITH
DEAN & JUDY MANOS

THIS AMATEUR PRODUCTION IS PRESENTED BY
ARRANGEMENT WITH JOSEF WEINBERGER LTD. ON BEHALF OF
MUSICAL THEATRE INTERNATIONAL OF NEW YORK



Affiliated to the
National Operatic and
Dramatic Association

NODA, THE NATIONAL OPERATIC AND DRAMATIC ASSOCIATION, FOUNDED IN 1899, IS THE MAIN REPRESENTATIVE BODY FOR AMATEUR THEATRE IN THE UK. IT HAS A MEMBERSHIP OF SOME 2400 AMATEUR/COMMUNITY THEATRE GROUPS AND 300 INDIVIDUAL ENTHUSIASTS THROUGHOUT THE UK. OUR SOCIETY IS PROUD TO BE AFFILIATED TO NODA.

PLEASE NOTE THAT THE VIDEOING, PHOTOGRAPHY OR SOUND RECORDING OF ANY PART OF THIS PERFORMANCE IS NOT PERMITTED. PLEASE TURN OFF ALL MOBILE PHONES AND ANY OTHER BLEEPING DEVICES!

A Message From Our Chairman

MAY I EXTEND A VERY WARM WELCOME TO YOU ALL TO OUR PRODUCTION OF SWEENEY TODD THE DEMON BARBER OF FLEET STREET. THIS MUSICAL THRILLER WITH MUSIC AND LYRICS BY STEPHEN SONDHEIM AND LIBRETTO BY HUGH WHEELER WAS BASED ON THE 1973 PLAY 'SWEENEY TODD THE DEMON BARBER OF FLEET STREET' BY CHRISTOPHER BOND.

SWEENEY TODD OPENED ON BROADWAY AT THE URIS THEATRE ON MARCH 1ST 1979 AND RAN FOR 557 PERFORMANCES, HAROLD PRINCE DIRECTED IT WITH MUSICAL STAGING BY LARRY FULLER AND IT STARRED LEN CARIOU AS SWEENEY TODD AND ANGELA LANSBURY AS MRS LOVETT. SWEENEY HAD MANY REVIVALS IN THE USA AND IN THE UK BUT MORE RECENTLY TIM BURTON'S 2007 FILM STARRING JOHNNY DEPP AND HELEN BONHAM-CARTER BROUGHT SWEENEY TODD TO A WIDER AUDIENCE.

THE STORY AND MUSIC OF SWEENEY HAS REALLY CHALLENGED AND STRETCHED THE CAST AND ONCE AGAIN OUR DIRECTOR DANI FINCHAM HAS EXCELLED IN MANAGING TO GET THE BEST OUT OF EVERYONE. OUR NEW MUSICAL DIRECTOR NEIL SOMERVILLE HAS TAUGHT THE CAST THE DIVERSE AND INTRICATE SONDHEIM SCORE AND I ASSURE YOU ARE IN FOR A REAL WEST END TREAT.

THE SOCIETY IS ALWAYS ON THE LOOKOUT FOR NEW MEMBERS TO SWELL THE RANKS IN ALL DEPARTMENTS SO IF YOU HAVE A TALENT FOR SINGING, DANCING, ACTING, BACK STAGE WORK ETC., WE WOULD LIKE TO HEAR FROM YOU EITHER BY CONTACTING OUR WEB SITE OR COLIN THORNE OUR MEMBERSHIP SECRETARY. DETAILS ARE AT THE BACK OF THIS PROGRAMME.

THIS IS THE END OF MY CHAT SO SIT BACK IN YOUR SEAT AS THE STORY UNFOLDS, WHICH IS CERTAINLY NOT FOR THE FAINT HEARTED, OF THE LIFE AND TIMES IN LONDON IN THE LATE SEVENTEEN HUNDREDS, AND THE PARTNERSHIP OF SWEENEY TODD AND MRS LOVETT. WE THANK YOU FOR YOUR CONTINUED SUPPORT AND WE LOOK FORWARD TO SEEING YOU AT OUR NEXT PRODUCTION OF 'JESUS CHRIST SUPERSTAR' IN OCTOBER.

MICHAEL SPURGEON
CHAIRMAN COS

Production Team Musical Director

Director
Dani Fincham

DANI'S FIRST SHOW WAS IN A SCHOOL PRODUCTION OF "HANSEL & GRETEL" BUT A MORE SIGNIFICANT FIRST WAS THAT SHE APPEARED AS MISS LYNCH IN CO2'S FIRST PRODUCTION "GREASE" IN 1984.

SINCE THAT TIME DANI HAS BEEN INVOLVED WITH COS AND CO2 ONSTAGE AND, MORE RECENTLY AS A SUCCESSFUL DIRECTOR FOR BOTH COS AND CO2.

Neil Somerville

NEIL SOMERVILLE WORKS AS A MUSICAL DIRECTOR, VOCAL COACH AND CONCERT ACCOMPANIST ACROSS THE UK. HE IS ALSO A SINGING TEACHER AT COLCHESTER INSTITUTE AND A REPERTOIRE COACH AT THE LONDON SCHOOL OF MUSICAL THEATRE. HE IS DELIGHTED TO BE MUSICAL DIRECTOR FOR COS'S FIRST FORAY INTO SONDHEIM AND IS THRILLED BY HOW HARD THEY HAVE WORKED TO ACHIEVE THE STANDARD YOU SEE ON STAGE. NEIL WOULD LIKE TO THANK DANI FOR PUTTING UP WITH HIS TEDIOUS NAGGING AND FOR BEING A GREAT PARTNER IN CRIME DURING REHEARSALS.



DANI FINCHAM & NEIL SOMERVILLE

LIGHTING DESIGN
JIM BOWMAN

SOUND DESIGN
MARTYN J HUNT

WARDROBE MANAGER
BERYL BALLS

PROPERTIES MANAGER
MAGGIE WALTON

FRONT OF HOUSE MANAGER
LIZ THORNE

CLARINET:
JANE ELSTON

TRUMPET:
JOHN JERMY

HORN:
KAY DAWSON

TROMBONE:
CLAIRE CLARKE

PERCUSSION:
ANDY DOWDING

KEYBOARD:
DANIEL LAW

VIOLIN:
PETER IVEY

CELLO:
CHRISTOPHER SLATTER

DOUBLE BASS:
FELIX BARLTE

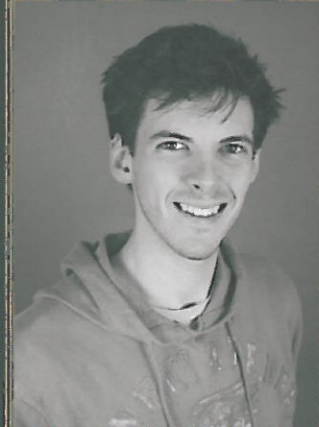
Company Photos



SWEENEY TODD
MARK FINCHAM



MRS LOVETT
MELANIE GREANEY



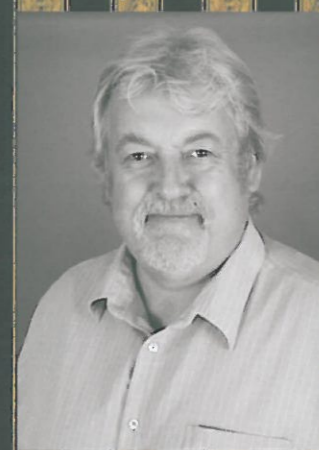
TOBIAS
PHIL YOUNG



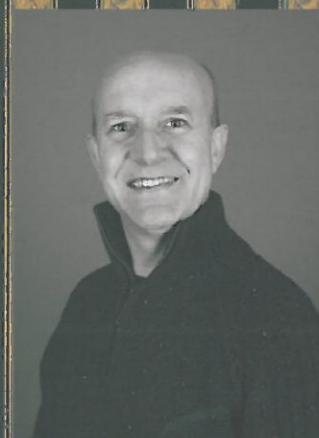
JOHANNA
HANNAH
SHAYLE-KENNEDY



ANTHONY
SHANE KING



JUDGE TURPIN
DAVID KING



PIRELLI
GRAHAM BOWDEN



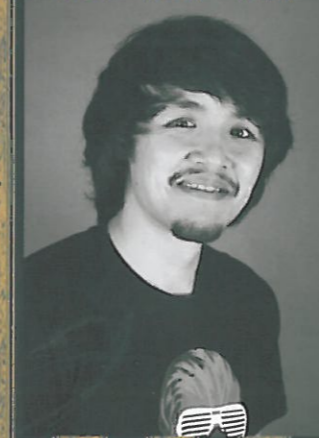
BEGGAR WOMAN
CAROLINE FRITZ



BEADLE BAMFORD
BEN ADAMS



FOGG
RIKKI HAMMOND



BIRD SELLER
STEVEN CHAN

Sweeney Todd *Mark Finchem*

Cast

MARK HAS BEEN INVOLVED IN OVER 65 FULL SCALE MUSICAL PERFORMANCES INCLUDING OVER 30 PRINCIPAL/SUPPORTING PARTS SINCE HIS FIRST PERFORMANCE TO A PAYING AUDIENCE AT THE AGE OF SIX. HE HAS WORKED ON STAGE, BACK STAGE AND IN SOCIETY MANAGEMENT JOINING COS IN 1984.

MARK SAYS "THE AMATEUR ARENA IS A REALISTIC WAY OF GETTING THE CHANCE TO PERFORM ON STAGE. IN THE CURRENT CULTURE OF 'CELEBRITY' OBSESSION, MANY PEOPLE CHASE FAME AND FORTUNE IN THE ENTERTAINMENT INDUSTRY AND EVEN IF THEY ARE LUCKY ENOUGH, WILL NEVER GET THE OPPORTUNITY TO PERFORM THESE TYPES OF PARTS. I AM GRATEFUL TO HAVE BEEN GIVEN THE OPPORTUNITIES I'VE HAD AND TO HAVE BEEN PART OF THE VERY TALENTED TEAM THAT ARE RESPONSIBLE FOR THIS PRODUCTION. HAVING PLAYED THE PART OF ANTHONY MANY YEARS AGO ITS A PLEASURE TO BE ABLE TO REVISIT SWEENEY TODD THIS TIME PLAYING THE TITLE ROLE. MY ONLY REGRET IS THAT MY TWO LITTLE GIRLS WILL NOT BE ABLE TO SEE THE SHOW AS THEY ARE TOO YOUNG FOR THIS ONE!"

Anthony *Shane King*

SHANE FIRST APPEARED ON STAGE IN 2004 IN 'HOT MIKADO' WITH CO2 (COLCHESTER OPERATIC SOCIETY SECOND EDITION). HE HAS SINCE APPEARED IN CO2'S PRODUCTIONS OF 'WESTSIDE STORY', 'GODSPELL', 'WE WILL ROCK YOU', AND MOST RECENTLY 'FOOTLOOSE'. WHILST AT UNIVERSITY, HE PERFORMED IN 'JEKYLL & HYDE: THE MUSICAL' AND 'THE FULL MONTY' WITH THE NORFOLK & NORWICH THRESHOLD THEATRE GROUP, AND IN 'WESTSIDE STORY' AND 'THE PRODUCERS' WITH THE NORFOLK & NORWICH OPERATIC SOCIETY. NAMED THE COLCHESTER ROTARY FESTIVAL'S SINGER OF THE YEAR IN 2008 AND 2009, SHANE IS PLEASED TO BE BACK PERFORMING IN COLCHESTER, AND IS DELIGHTED TO BE PERFORMING IN HIS FIRST SHOW WITH THE MAIN SOCIETY.

Judge Turpin *David King*

DAVE'S FIRST OPERATIC SOCIETY SHOW WAS AS A 15 YEAR OLD IN 1972, IN ROBERT AND ELIZABETH. SHOWS WITH RAY JEFFERY THROUGH THE 80S WERE TERRIFIC FUN BUT DAVE MOVED AWAY FROM LARGE SCALE MUSICAL THEATRE AFTER PLAYING JUD IN OKLAHOMA IN 1992. HE HAS GIVEN HIS ENERGY TO THE HEADGATE THEATRE OVER THE LAST TWELVE YEARS BUT IS DELIGHTED TO BE ABLE TO APPEAR IN SWEENEY WITH HIS WIFE DAWN.

Beadle Bamford *Ben Adams*

BEN HAS BEEN DOING AMATEUR DRAMATICS SINCE THE AGE OF 8, STARTING IN GREAT BENTLEY GREEN PLAYERS IN PANTO BEFORE MOVING TO BRIGHTLINGSEA OPERATICS WHERE HE WAS CHARLIE DEVENPORT IN ANNIE GET YOUR GUN. HE THEN MOVED TO CLACTON MUSICAL THEATRE GROUP WHERE HE PERFORMED IN OKLAHOMA, GUYS AND DOLLS AND HIGH SOCIETY. THIS IS BEN'S FIRST ROLE IN COLCHESTER OPERATIC SOCIETY AND IS VERY EXCITED DUE TO THEIR EXCEPTIONAL REPUTATION AND IS LOOKING FORWARD TO PLAYING THE NASTY BEADLE BAMFORD.

Pirelli *Graham Bowden*

GRAHAM IS AN OPTOMETRIST WORKING IN WIVENHOE AND HAS BEEN A MEMBER OF COLCHESTER OPERATIC SOCIETY SINCE 2001. HE HAS PERFORMED IN EIGHT OF THE LAST TEN PRODUCTIONS BEING PRIVILEGED TO PLAY BILLY IN CAROUSEL, THE KING IN THE KING AND I, FAGIN IN OLIVER, PROFESSOR HIGGINS IN MY FAIR LADY, ZANGLER IN CRAZY FOR YOU, AN OFFICER IN SOUTH PACIFIC AND ROLES IN FIDDLER ON THE ROOF. GRAHAM IS ALSO A MEMBER OF PLATFORM MUSICALS PLAYING AT THE HEADGATE THEATRE.

Bios

Mrs. Lovett *Melanie Greaney*

THIS IS MEL'S SECOND PERFORMANCE BACK ON THE MERCURY STAGE AFTER PLAYING THE PART OF 'VI' IN CO2'S PRODUCTION OF 'FOOTLOOSE' LATE LAST YEAR. MEL IS THRILLED TO HAVE LANDED THE PART OF MRS LOVETT WHICH, WITHOUT A DOUBT, IS HER MOST CHALLENGING ROLE TO DATE AND WOULD LOVE TO THANK DANI AND NEIL FOR THIS AMAZING OPPORTUNITY. MELANIE HAS BEEN INTO MUSICAL THEATRE AND PERFORMANCE FROM AN EARLY AGE, STARRING IN MANY DIFFERENT SCHOOL, CHARITY AND COMMUNITY PROJECTS AND IS ALSO INVOLVED WITH 'THE LOWESTOFT PLAYERS'. MEL HAS HAD GREAT FUN IN REHEARSALS WORKING WITH OLD AND NEW FACES, AND WOULD LIKE TO THANK THE COMPANY FOR THEIR WARM RECEPTION INTO COS. MEL HAS JUST GAINED A FOUNDATION MUSICAL THEATRE DEGREE WITH 'MERIT' AND IS NOW STUDYING TOWARDS A BA HONOURS IN MUSICAL THEATRE AND HOPES THIS WILL GET HER ONE STEP CLOSER TO HER DREAM OF PERFORMING IN THE PROFESSIONAL INDUSTRY.

Hannah *Hannah Shaule Kennedy*

HANNAH HAS BEEN VOCALLY TRAINED SINCE AGE 11. SHE HAS TAKEN PART IN MANY COMPETITIONS AND SHOWS AND IN 2007 SHE WON COLCHESTER ROTARY 'SINGER OF THE YEAR'. HANNAH HAS BEEN TAKING PART IN BOTH SCHOOL AND AMATEUR DRAMATIC PRODUCTIONS SINCE AGE 12 AND FROM THIS HER LOVE FOR MUSICAL THEATRE GREW. HANNAH HAS RECENTLY RECORDED AN ALBUM FOR CHARITY WHICH WILL BE RELEASED EARLIER THIS YEAR IN HMV AND ITUNES. SHE IS TAKING A GAP YEAR THIS YEAR AND THEN HOPING TO GO TO DRAMA SCHOOL TO CONTINUE TRAINING AND PURSUING HER DREAM. HANNAH IS A MEMBER OF CO2 AND THIS IS HER FIRST COS SHOW.

Tobias *Phil Young*

PHIL IS A MEMBER WHO STARTED WITH CO2. HIS FIRST SHOW WAS AS BERNARDO IN WEST SIDE STORY, WHICH WAS FOLLOWED BY MAJOR PARTS IN ALL SUBSEQUENT PRODUCTIONS. HE PLAYED JESUS IN 'GODSPELL', KHASHOGGI IN 'WE WILL ROCK YOU' & STEVE IN 'SUMMER HOLIDAY'. HE HAS WORKED WITH COS BEFORE, PLAYING MOTEL IN COS'S PRODUCTION OF FIDDLER ON THE ROOF AND WAS A CHORUS MEMBER IN 'MY FAIR LADY'. PHIL IS INVOLVED WITH MANY LOCAL THEATRE GROUPS AND CAN BE REGULARLY SEEN IN SHOWS AT THE HEADGATE THEATRE. HE HAS ALSO BEEN DOING SOME PROFESSIONAL WORK IN THEATRE, TV AND FILM AND IS AMBITIOUS TO PROGRESS FURTHER IN THE PROFESSIONAL WORLD.

Beggar Woman *Caroline Fritz*

CAROLINE HAS BEEN PERFORMING LOCALLY ON THE AMATEUR STAGE FOR OVER 40 YEARS, AND A MEMBER OF COLCHESTER OPERATIC SOCIETY FOR 32 OF THOSE YEARS! HAVING GAINED A DEGREE IN EXPRESSIVE ARTS SHE WORKED PROFESSIONALLY FOR A SHORT WHILE BEFORE TAKING A BREAK TO RAISE A FAMILY, AND THEN BEGIN A SECOND CAREER AT COLCHESTER INSTITUTE. HER FAVOURITE ROLES TO DATE INCLUDE MRS ANNA IN THE KING AND I AND APRIL IN COMPANY WHICH SHE PERFORMED WITH PLATFORM PLAYERS AT THE HEADGATE THEATRE. AS WELL AS PERFORMING CAROLINE HAS ALSO DIRECTED PRODUCTIONS AND CONCERTS FOR COS. AS AN ORIGINAL MEMBER OF CO2, CAROLINE IS DELIGHTED THAT HER TWO CHILDREN, LILY AND BARNEY ARE NOW ENJOYING CARRYING ON THE FAMILY TRADITION!

Sweeney Todd



SWEENEY TODD
MRS LOVETT
BEGGAR WOMAN
JOHANNA
ANTHONY
TOBIAS
PIRELLI
JUDGE TURPIN
BEADLE BAMFORD
FOGG
BIRD SELLER



Featured

RICHARD BLAND,
GRANT BOROFF,
JOHN DAVIES,
GARETH GWYN-JONES,
SAM PILKINGTON

Ensemble

KATE BAGLEY, LYDIA BELL,
VICTORIA BLACKBURN,
CHARLOTTE BUTCHER,
VALENTINE CAVANAGH-WHITE,
EMMA DAGLEISH, LISA DIASON,
CLARE EDWARDS, JOHN ENFIELD,
JASON HENDERSON,



The Cast

MARK FINCHAM
MELANIE GREANEY
CAROLINE FRITZ
HANNAH SHAYLE-KENNEDY
SHANE KING
PHIL YOUNG
GRAHAM BOWDEN
DAVID KING
BEN ADAMS
RIKKI HAMMOND
STEVEN CHAN



Ensemble

DAWN KING,
ANNA POOL,
BARBARA RYAN,
JENNA SAIZ

Chorus

COLIN HORWOOD, LEANNE HOWARD,
EMMA LUMB, SALLY LEUNG,
DAVID MOYE, NATASHA PALMER,
BEN POWELL, PAT PRESTNEY,
BARBARA SCULLY, SARAH STEVENSON,
JULIET TURNER, EMMA WARD,
SARAH WILLINGHAM



Sweeney Todd Synopsis

AFTER 15 YEARS IN EXILE BENJAMIN BARKER RETURNS TO LONDON AND TAKES RESIDENCE ABOVE MRS. LOVETT'S PIE SHOP, HIS NAME NOW CHANGED TO SWEENEY TODD, AND OPENS HIS OLD BARBER'S ESTABLISHMENT. MRS. LOVETT TELLS TODD OF THE FATE THAT HAS BEFALLEN HIS FAMILY; HIS WIFE LUCY POISONED HERSELF AND HIS DAUGHTER JOHANNA IS NOW THE WARD OF JUDGE TURPIN, THE MAN WHO EXILED HIM FOR A FALSE CRIME AND WHO, ALONG WITH HIS BEADLE, COVETED HIS WIFE. TODD SWEARS HIS REVENGE UPON THE JUDGE AND BEADLE BY ANY MEANS.

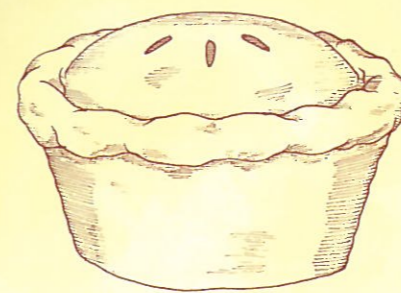
TODD CHALLENGES A STREET MOUNTEBANK BY THE NAME OF SIGNOR PIRELLI, A MAN WHO CLAIMS TO BE THE "KING OF BARBERS, BARBER OF KINGS". WITH THE BEADLE AS JUDGE, A SHAVE OFF ENSUES WITH TODD THE WINNER. LATER PIRELLI VISITS TODD AND BLACKMAILS HIM, SAYING HE WILL REVEAL TODD'S TRUE IDENTITY UNLESS HE PAYS HIM. PANICKING, TODD ATTACKS PIRELLI AND KILLS HIM. TO DISPOSE OF THE BODY, MRS. LOVETT SUGGESTS USING HIM TO FILL HER REVOLTING PIES AND TAKES PIRELLI'S ASSISTANT, TOBIAS, AS HER "ADOPTED SON".

ANTHONY, THE SAILOR WHO SAVED TODD AND BRINGS HIM BACK TO LONDON, FALLS IN LOVE WITH A BEAUTIFUL GIRL WHO IS TODD'S DAUGHTER JOHANNA. THREATENED BY ANTHONY'S APPEARANCE TURPIN DECIDES TO WED JOHANNA HIMSELF, AND ON BEADLE'S RECOMMENDATION, VISITS TODD FOR A SHAVE. TODD RELISHES THE OPPORTUNITY TO HAVE THE JUDGE IN HIS CHAIR BUT, BEFORE HE CAN HAVE VENGEANCE, ANTHONY INTERRUPTS WITH NEWS OF HIS NEW LOVE AND HIS PLAN TO STEAL JOHANNA AWAY. THE JUDGE LEAVES ENRAGED, VOWING NEVER TO COME BACK TO TODD'S PARLOUR, AND HAS JOHANNA COMMITTED TO AN ASYLUM TO THWART THEIR INTENDED ASSIGNATION. FURIOUS THAT HE HAS MISSED HIS OPPORTUNITY, TODD DECIDES TO PRACTICE ON OTHER THROATS AND SWEARS HE WILL HAVE VENGEANCE. THIS PROVIDES MORE MEAT FOR MRS. LOVETT'S PIES, WHICH MAKES HER SHOP EXTREMELY POPULAR.

ANTHONY ASKS TODD FOR ADVICE ON HOW TO RESCUE JOHANNA AND HE SUGGESTS MASQUERADING AS A WIGMAKERS APPRENTICE TO GAIN ACCESS TO THE ASYLUM. HE ALSO RECOMMENDS THEY RETURN TO HIS SHOP BEFORE THEY FLEE LONDON. TODD THEN WRITES TO THE JUDGE, TELLING HIM OF ANTHONY'S RESCUE ATTEMPT AND THAT THEY WILL BE AT HIS SHOP LATER THAT NIGHT.

DURING ALL THIS TOBIAS BECOMES INCREASINGLY SUSPICIOUS OF TODD AND FEARS FOR MRS. LOVETT'S SAFETY. TO EASE HIS FEARS MRS. LOVETT TAKES HIM TO THE BAKE HOUSE AND TEACHES HIM HOW TO MAKE THE PIES, WITHOUT REVEALING THEIR GRUESOME CONTENTS. THE BEADLE ARRIVES AND MRS. LOVETT LOCKS TOBIAS IN THE BAKE HOUSE AND TODD'S PLAN BEGINS TO UNFOLD.....

WHO DESERVES TO DIE? WHAT HAPPENS THEN, WELL THAT'S THE PLAY AND HE WOULDN'T WANT US TO GIVE IT AWAY.....

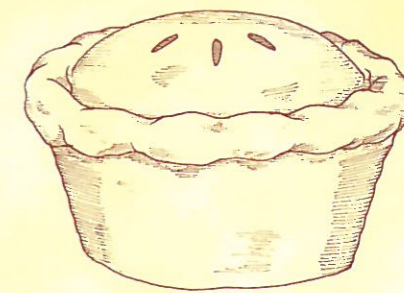


Act 1

"NO PLACE LIKE LONDON"
 "THE BARBER AND HIS WIFE"
 "THE WORST PIES IN LONDON"
 "POOR THING"
 "MY FRIENDS"
 "THE BALLAD OF SWEENEY TODD"
 (REPRISE)
 "GREEN FINCH AND LINNET BIRD"
 "AH, MISS"
 "JOHANNA"
 "PIRELLI'S MIRACLE ELIXIR"
 "THE CONTEST"
 "THE BALLAD OF SWEENEY TODD"
 (REPRISE)
 "JOHANNA (JUDGE'S SONG)"
 "WAIT"
 "PIRELLI'S DEATH"
 "THE BALLAD OF SWEENEY TODD"
 "KISS ME"
 "LADIES IN THEIR SENSITIVITIES"
 "KISS ME"
 "PRETTY WOMEN"
 "EPIPHANY"
 "A LITTLE PRIEST"

Songs
 Prologue

"ORGAN PRELUDE"
 "THE BALLAD OF SWEENEY TODD"



Act 2

"GOD, THAT'S GOOD!"
 "JOHANNA (QUARTET)"
 "BY THE SEA"
 "WIGMAKER SEQUENCE; THE BALLAD OF SWEENEY TODD" (REPRISE)
 "THE LETTER"
 "NOT WHILE I'M AROUND"
 "SWEET POLLY PLUNKET"
 "THE TOWER OF BRAY"
 "THE BALLAD OF SWEENEY TODD" (REPRISE)
 "FOGG'S ASYLUM/FOGG'S PASSACAGLIA"
 "CITY ON FIRE"
 "SEARCHING"
 "AH, MISS" (REPRISE)
 "BEGGAR WOMAN'S LULLABY"
 "THE JUDGE'S RETURN"
 "FINAL SEQUENCE"
 "THE BALLAD OF SWEENEY TODD"
 (EPILOGUE)

Dancewear Specialists BODY & SOLE



- Pointe Shoe Fitting by Appointment
- Freestyle & Fitness Wear
- Dancewear & Shoes • Ballroom Shoes
- Skating Wear • Gifts

• Prompt Mail Order Service • Children's Fancy Dress Hire

www.bodynsole.co.uk

01206 564606

43 St. John's Street, Colchester, Essex CO2 7AD

Attend the tale of Sweeney Todd.....

SWEENEY TODD IS A FICTIONAL CHARACTER WHO FIRST APPEARED AS THE ANTAGONIST OF THE VICTORIAN PENNY DREADFUL THE STRING OF PEARLS (1846-1847). PENNY DREADFULS, OR PENNY BLOODS, WERE SERIALIZED TALES OF MURDER AND TERROR THAT COST A PENNY. PUBLISHED IN THE 19TH CENTURY, THESE BRITISH FICTIONS WERE MAINLY AIMED AT WORKING CLASS ADOLESCENTS AND WERE PRINTED ON CHEAP PULP PAPER. CLAIMS THAT SWEENEY TODD WAS A HISTORICAL PERSON ARE STRONGLY DISPUTED BY SCHOLARS, ALTHOUGH THERE ARE POSSIBLE LEGENDARY PROTOTYPES, ARGUABLY MAKING THE STORY OF SWEENEY TODD AN EARLY EXAMPLE OF AN URBAN LEGEND.

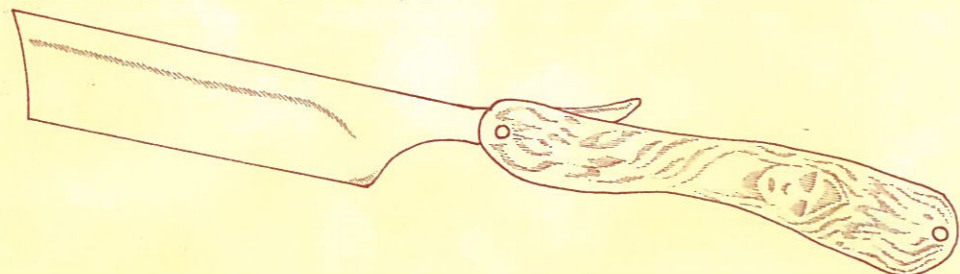
IN THE ORIGINAL VERSION OF THE TALE, TODD IS A BARBER WHO DISPATCHES HIS VICTIMS BY PULLING A LEVER WHILE THEY ARE IN HIS BARBER CHAIR, WHICH MAKES THEM FALL BACKWARD DOWN A REVOLVING TRAPDOOR INTO THE BASEMENT OF HIS SHOP, GENERALLY CAUSING THEM TO BREAK THEIR NECKS OR SKULLS. JUST IN CASE THEY ARE ALIVE, HE GOES TO THE BASEMENT AND "POLISHES THEM OFF" (SLITTING THEIR THROATS WITH HIS STRAIGHT RAZOR). AFTER TODD HAS ROBBED HIS DEAD VICTIMS OF THEIR GOODS, MRS. LOVETT, HIS PARTNER IN CRIME, ASSISTS HIM IN DISPOSING OF THE BODIES BY BAKING THEIR FLESH INTO MEAT PIES, AND SELLING THEM TO THE UNSUSPECTING CUSTOMERS OF HER PIE SHOP. TODD'S BARBER SHOP IS SITUATED AT 186 FLEET STREET, LONDON AND IS CONNECTED TO MRS. LOVETT'S PIE SHOP IN NEARBY BELL YARD BY MEANS OF AN UNDERGROUND PASSAGE.

CLAIMS THAT SWEENEY TODD WAS A REAL PERSON WERE FIRST MADE IN THE INTRODUCTION TO THE 1850 (EXPANDED) EDITION OF THE STRING OF PEARLS AND HAVE PERSISTED TO THE PRESENT DAY. IN TWO BOOKS, PETER HAINING ARGUED THAT SWEENEY TODD WAS A HISTORICAL FIGURE WHO COMMITTED HIS CRIMES AROUND 1800. NEVERTHELESS, OTHER RESEARCHERS WHO HAVE TRIED TO VERIFY HIS CITATIONS FIND NOTHING IN THESE SOURCES TO BACK HAINING'S CLAIMS. THE TALE SURROUNDING THE CHARACTER BECAME A STAPLE OF VICTORIAN MELODRAMA. LATER IT WAS THE SUBJECT OF A 1959 BALLET BY ENGLISH COMPOSER SIR MALCOLM ARNOLD.

IN 1973 SWEENEY TODD, THE DEMON BARBER OF FLEET STREET, A PLAY BY THE BRITISH PLAYWRIGHT CHRISTOPHER BOND, WAS THE FIRST TO GIVE TODD A MORE SYMPATHETIC MOTIVE: HE IS A WRONGFULLY IMPRISONED BARBER WHO RETURNS UNDER THE NEW NAME SWEENEY TODD TO LONDON AFTER 15 YEARS IN AN AUSTRALIAN PENAL COLONY TO FIND THAT THE JUDGE RESPONSIBLE FOR HIS IMPRISONMENT HAS RAPED HIS YOUNG WIFE AND DRIVEN HER TO SUICIDE. HE SWEARS REVENGE, BUT WHEN HIS PLANS FACE OBSTACLES, HE BEGINS TO SLASH THE THROATS OF HIS CUSTOMERS. THE CHARACTER'S NEW, SYMPATHETIC BACK-STORY WAS BOND'S WAY OF GRAFTING DRAMATIC THEMES FROM THE REVENGER'S TRAGEDY ONTO PITT'S STAGE PLOT.

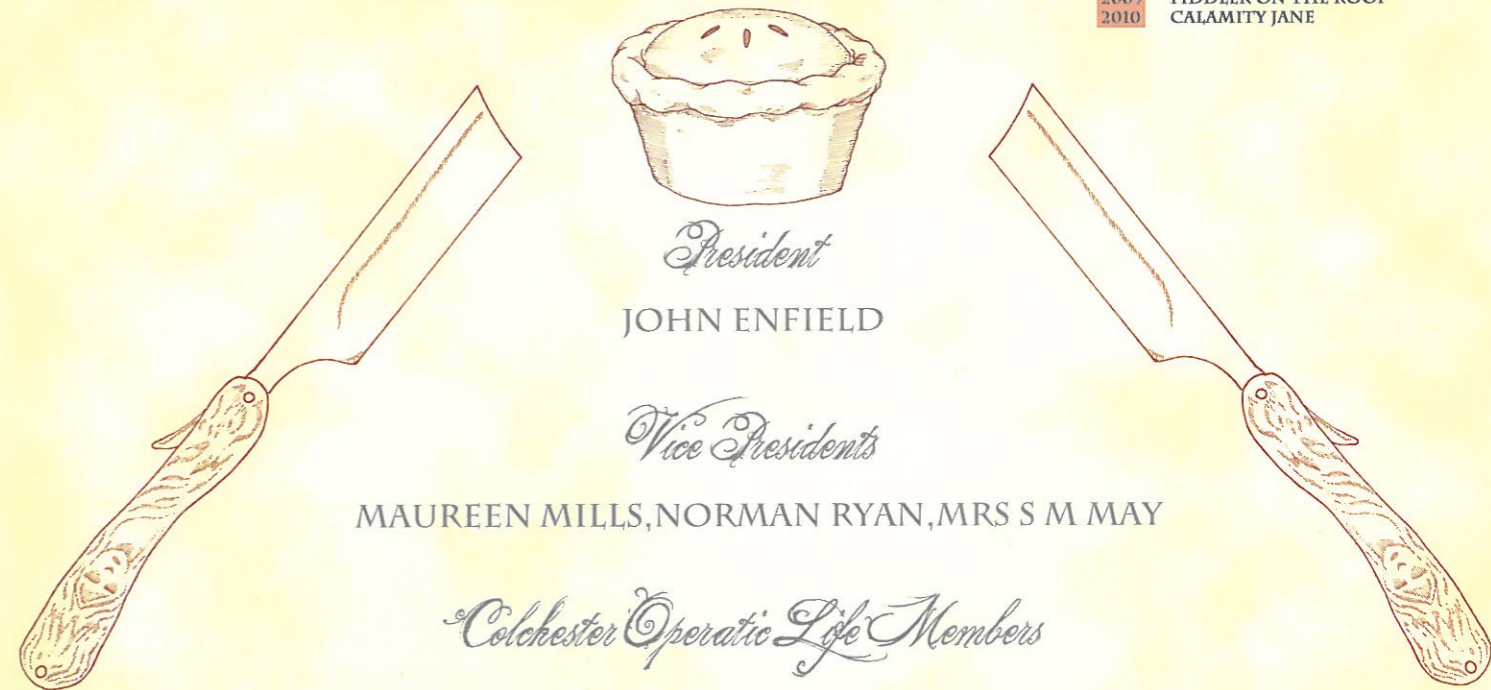
IN 1979, SWEENEY TODD: THE DEMON BARBER OF FLEET STREET - A MUSICAL THRILLER, THE ACCLAIMED MUSICAL ADAPTATION OF BOND'S PLAY BY STEPHEN SONDHEIM AND HUGH WHEELER OPENED, STARRING LEN CARIOU AS SWEENEY TODD (HERE CHRISTENED AS BENJAMIN BARKER) AND ANGELA LANSBURY AS MRS. LOVETT. IT IS SONDHEIM'S VERSION THAT COLCHESTER OPERATIC SOCIETY WILL BE PERFORMING TONIGHT.

SWEENEY TODD HAS ALSO BEEN FEATURED IN SEVERAL FILMS, THE MOST RECENT BEING 2007'S SWEENEY TODD: THE DEMON BARBER OF FLEET STREET, BASED ON THE 1979 MUSICAL, DIRECTED BY TIM BURTON, WITH JOHNNY DEPP IN THE TITLE ROLE.



Past Productions

1925	GONDOLIERS	1951	THE STUDENT PRINCE	1971	DIE FLEDERMAUS	1989	MIKADO
1926	MIKADO	1952	HARMONY HILL	1972	MIKADO	1990	MY FAIR LADY
1927	PRINCESS IDA	1953	SHOW BOAT	1973	ROBERT AND ELIZABETH	1991	THE PAJAMA GAME
1929	IOLANTHE	1954	BRIGADOON	1974	ORPHEUS IN THE UNDERWORLD	1992	THE MUSIC MAN
1930	YEOMAN OF THE GUARD	1955	PINK CHAMPAGNE	1975	THE MERRY WIDOW	1993	FIDDLER ON THE ROOF
1931	TRIAL BY JURY	1956	VAGABOND KING	1976	MY FAIR LADY	1994	OKLAHOMA
	PIRATES OF PENZANCE	1957	WHITE HORSE INN	1977	THE GREAT WALTZ		KISS ME KATE
	LES CLOCHES DE CORNEVILLE	1958	SUMMER SONG	1978	FIDDLER ON THE ROOF		GODSPELL
1932	QUAKER GIRL	1959	THE MERRY WIDOW	1979	THE KING & I	1995	ORPHEUS IN THE UNDERWORLD
1933	MIKADO	1960	SONG OF NORWAY	1980	SHOW BOAT	1996	HELLO DOLLY
1935	GONDOLIERS	1961	NAUGHTY MARIETTA	1981	HELLO DOLLY	1998	PIRATES OF PENZANCE
	MERRIE ENGLAND	1962	THE DANCING YEARS	1982	CAMELOT	1999	ME & MY GIRL
1936	DUCHESS OF DANZIG	1963	KISMET	1983	HALF A SIXPENCE	2000	SINGIN' IN THE RAIN
1937	VAGABOND KING	1964	THE MOST HAPPY FELLA	1984	BRIGADOON	2001	SWEET CHARITY
1938	COUNTRY GIRL	1965	THEY CAME TO A CITY	1985	GUYS & DOLLS	2002	HALF A SIXPENCE
1946	THE BEGGAR'S OPERA		THE STUDENT PRINCE		CAROUSEL	2003	CAROUSEL
1947	TOM JONES		HAY FEVER	1986	PIRATES OF PENZANCE	2004	THE KING & I
	THE ARCADIAN	1966	LA BELLE HELENE		THE SOUND OF MUSIC	2005	OLIVER
1948	WALTZ DREAM	1967	CAROUSEL	1987	SOUTH PACIFIC	2006	CRAZY FOR YOU
1949	NEW MOON	1969	COUNT OF LUXEMBOURG		OLIVER	2007	MY FAIR LADY
1950	THE WIND AND RAIN	1970	OKLAHOMA	1988	THE DESERT SONG	2008	CAMELOT
	DESERT SONG		KISS ME KATE		ANNIE GET YOUR GUN	2009	SOUTH PACIFIC
						2010	FIDDLER ON THE ROOF
							CALAMITY JANE



President

JOHN ENFIELD

Vice Presidents

MAUREEN MILLS, NORMAN RYAN, MRS S M MAY

Colchester Operatic Life Members

ANN DYE, JOHN ENFIELD, DAVID FORDER, SYLVIA HAWKINS,
KEN SMITH, MICHAEL SPURGEON, COLIN THORNE

Colchester Operatic Committee

CHAIRMAN	MIKE SPURGEON
SECRETARY	LIZ THORNE
TREASURER	NORMAN RYAN
BUSINESS MANAGER	MARK FINCHAM
MEMBERSHIP SECRETARY	COLIN THORNE
PUBLICITY	BARBARA PEARS
PUBLICITY ASSISTANT & PROGRAMME	STEVEN CHAN
CO2 CHAIR	ANN MILLS
COSTUMES & PROPS MANAGER	MAGGIE WALTON
SOCIAL COMMITTEE	BARBARA SCULLY
CAST LIASON	CAROLINE FRITZ
WEBSITE	JOHN DAVIES

Acknowledgements

THE COMMITTEE AND MEMBERS OF COLCHESTER OPERATIC SOCIETY WOULD LIKE TO EXPRESS THEIR THANKS TO ALL THOSE WHO CONTRIBUTED TO THIS PRODUCTION THROUGH THEIR HELP IN THE GREEN ROOM AND FRONT OF HOUSE.

THANKS TO;
DEE EVANS AND THE MERCURY STAFF
MONTGOMERY SCHOOL
MAILBOXES ETC
MARTIN VINTER
MJH SOUND DESIGN
STAGE COSTUME DARTFORD
WITHAM OPERATIC

Production Team / Suppliers

STAGE DIRECTOR
MICHAEL SPURGEON

STAGE MANAGER
ALAN LARNER

STAGE CREW
TERRY LYON
BOB WILKINSON
MEMBERS OF COS & CO2

SCENERY
SCENIC PROJECTS LTD

COSTUMES
STAGE COSTUME
DARTFORD

PRODUCTION SOUND
ENGINEER
GRAHAM HOUNSELL

NO. 1 SOUND
MARTY HUNT

NO. 2 SOUND
JOE HAWKEN

SOUND ASSISTANTS
SAM BRAZIER
FRANCESCA KEELING

POSTERS
MAILBOXES ETC

PROGRAM
STEVEN CHAN
MAILBOXES ETC

PHOTOGRAPHS
SALLY PARKINSON

COVER ART
KEN SMITH

INTERIOR ART
STEVEN CHAN

HAIR & MAKE UP
KEN SMITH
MEMBERS OF COS

WARDROBE
BERYL BALLS
MEMBERS OF COS & CO2

PROPERTIES TEAM
MAGGIE WALTON
ANN MILLS
MEMBERS OF
COS & CO2

PROMPTS
MEMBERS OF
COS & CO2

Dates For Your Diary

Colchester Operatic Society Second Edition
(CO2)

"A Musical History Tour"

A Concert of Musical Theatre
Thursday 14th - Saturday 16th July 2011
St Mary's School, Lexden Road, Colchester
Tickets: £10 (£8 concessions)
Box Office: 01206 383172
Further details:
www.colchesteroperaticsociety.co.uk

Colchester Operatic Society

Jesus Christ Superstar

12th - 22nd October 2011

At The Mercury Theatre



Architectural Cladding
Signs & Vehicle Graphics
Large Format Digital Printing
Screen Printing
POS & Lightbox Manufacturer
Banners, Hoarding & Building Wraps
Clearline DDA Products

15 Clough Road, Severalls Industrial Estate
Colchester, Essex, CO4 9QS

W/ nes-solutions.co.uk T/ 01206 843 200



THE COLCHESTER BARBER SHOP

TRADITIONAL & MODERN
HAIR CUTTING
TRADITIONAL BARBER -
SHOP SHAVING

*Appointments Not Necessary
Children Welcome*

Open 6 Days
Mon - Fri 8.45am - 5.30pm
Sat 8.00am - 4.00pm

01206 583532

Visit our website:
www.colchesterbarbershop.co.uk
3 St. Botolphs Circus, Colchester CO2 7EF





CLARICE HOUSE

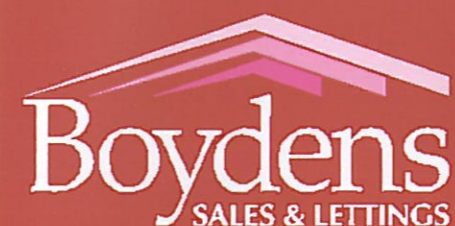
HEALTH CLUBS, DAY SPAS & RESTAURANTS

IPSWICH
01473 464658
ipswich@claricehouse.co.uk
Braintree, Ipswich IP8 1AJ

BURY ST. EDMUNDS
01284 705550
bury@claricehouse.co.uk
Haverhill Road, Bury St. Edmunds IP8 9PH

COLCHESTER
01206 734301
colchester@claricehouse.co.uk
Kingsford Park, Layer Road, Colchester CO1 4PH

www.claricehouse.co.uk



FOUR GENERATION
FAMILY BUSINESS BUILT ON
REPUTATION

ESTATE AGENTS,
LETTINGS & MANAGEMENT,
CHARTERED SURVEYORS & VALUERS

www.boydens.co.uk 01206 762244

COLCHESTER • BRAINTREE • IPSWICH •
FRINTON-ON-SEA • KELVEDON
• SUDBURY

Supporting your local theatre in the community



Fintry Wines

www.fintrywines.co.uk

Superb Choice - over 600 wines from 15 countries
Excellent value, lowest prices guaranteed
Free delivery in the Colchester area

**PLUS 10% off all purchases during January
and February using discount code 'COS10'**
(valid until 28/02/11)