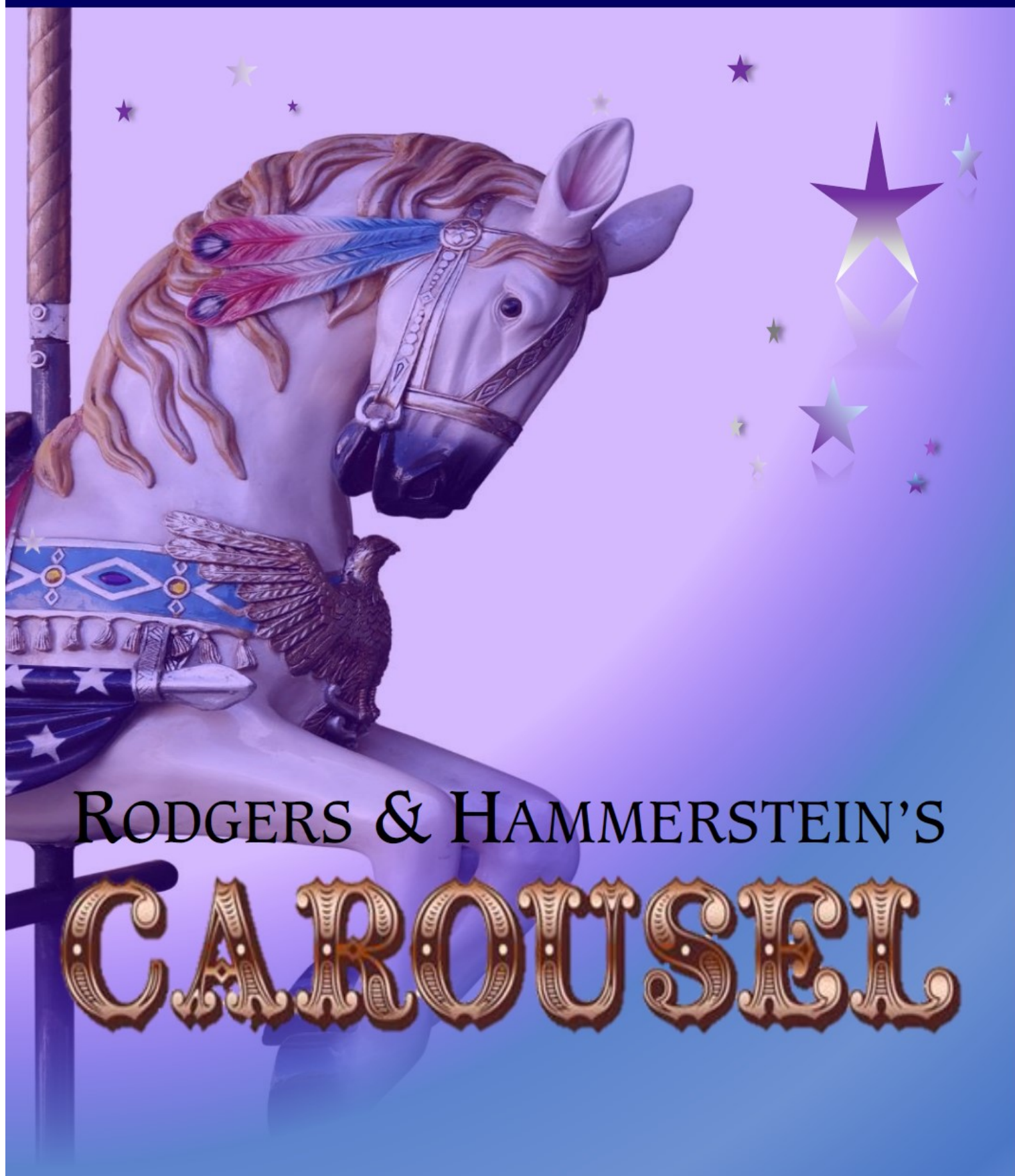


**COLCHESTER OPERATIC SOCIETY SECOND EDITION (CO2)**



**RODGERS & HAMMERSTEIN'S**  
**CAROUSEL**

**MERCURY THEATRE COLCHESTER**  
**8<sup>TH</sup> – 17<sup>TH</sup> SEPTEMBER 2016**

# THE DANCE SHOP

4 PORTAL PRECINCT SIR ISAACS WALK  
COLCHESTER CO1 1JJ



**BLOCH**

*Capezio*

*Katz Mirella*

*Genetex*

**Grishko**

**01206 616545**

[www.thedanceshopcolchester.co.uk](http://www.thedanceshopcolchester.co.uk)

**Stockists of All the Major  
Dancewear Manufactures**

*pineapple*

**Bunheads**  
**FREED  
OF LONDON**

**CALL IN AND ASK ABOUT OUR  
LOYALTY CARD SCHEME**

**Pointe Shoe Fitting  
by Appointment**

## THE NEW SEASON AT

*The*  
**Headgate**  
T H E A T R E

**Our new season brochure is out now!**

Contact the Box Office or go to the  
"What's On" page on our website.

The Headgate Theatre welcomes new volunteers who are  
interested in front of house, bar cover or technical support.  
As well as providing a venue for groups to perform, we hold  
open auditions for our own Headgate Theatre Productions

Headgate Theatre Productions present

### **The Play What I Wrote**

**October 5th – 8th (inc matinee)**  
*(a homage to Morecambe and Wise)*

### **Entertaining Angels**

**October 19th – 22nd**  
*(Comedy originally starring Penelope Keith)*

### **Di & Viv & Rose**

**November 9th – 12th**  
*(Challenging, sensitive and funny play)*

### **Father Christmas – The Panto!**

**December 7th – 11th (inc matinees)**

**Tickets for all productions: £11 / £9**

WE ARE IN CHAPEL STREET NORTH BEHIND THE PLAYHOUSE AND NEXT DOOR TO THE WAREHOUSE RESTAURANT

**01206 366000 [www.headgatetheatre.co.uk](http://www.headgatetheatre.co.uk)**





**Colchester Operatic Society Second Edition**

RODGERS & HAMMERSTEIN'S  
**CAROUSEL**

Music by  
**RICHARD RODGERS**  
Book and Lyrics by  
**OSCAR HAMMERSTIEN II**

As adapted by Benjamin F. Glazer  
Based on Ferenc Molnar's Play "Liliom"

**Original Dances by Agnes de Mille**

This amateur production is presented by arrangement with R & H Theatricals Europe

[www.rnh.com](http://www.rnh.com)



NODA, the National Operatic & Dramatic Association, founded in 1899, is the main representative body for Amateur Theatre in the U.K. It has a membership of some 2400 amateur/community theatre groups and 300 individual enthusiasts throughout the country.

[www.noda.org.uk](http://www.noda.org.uk)

## ★ CHAIRPERSON'S MESSAGE ★

**Welcome to the Mercury Theatre and CO2's production of Carousel.**

After last year's premiere production of Legally Blonde, we decided this year to give our CO2 members the opportunity to perform in one of the all-time classic musicals. This has given them quite a challenge at rehearsals due to the different style of dance and music that they have been accustomed to. When it came to the setting of "You'll Never Walk Alone" we all found this a very emotional rehearsal, as we remembered those who are no longer with us. This year it seems a number of talented stars have been taken away from us, not only those in the media but also those close to the COS/CO2 family.

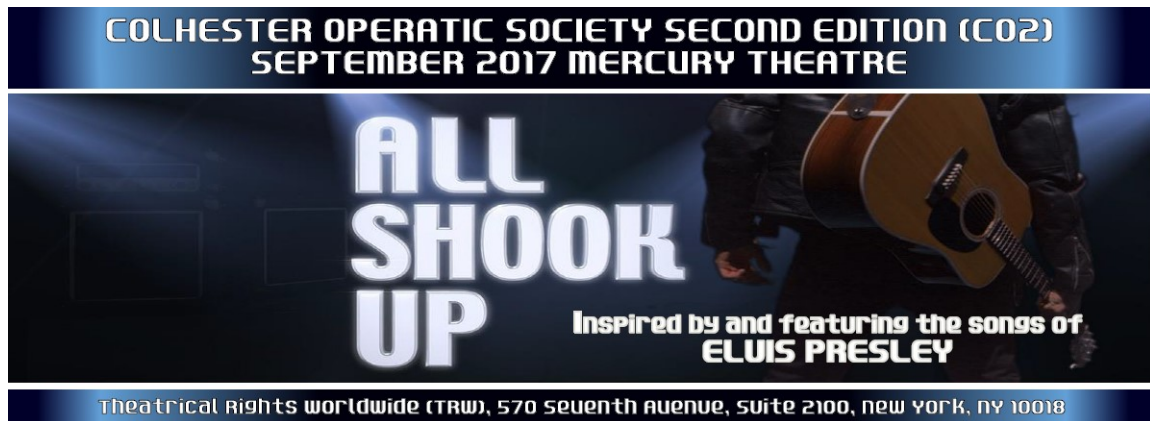
Have you ever thought you would like to be involved? As with all our productions we could not bring them together without the help of a number of volunteers working behind the scenes. It can be hard work at times but it's great fun and very rewarding. Also if you know of someone between the ages of 11 – 23 who would like to join in this experience, please let them know about us. If they say 'I don't think I'm good enough', tell them we have had a number of members who have also said this, but when they take part in a show they wish they had come along sooner!

Finally, I would like to take this opportunity to thank all who have helped with this production of Carousel, the CO2 Committee for all their support, and you our audience who we continually rely upon to make this possible.

Thank you all and enjoy the show.

Ann Taylor

CO2 Chairperson



### The Society

#### **President**

John Enfield

#### **Life Members**

Beryl Balls, John Enfield, Sylvia Hawkins, Alan Larner, Valerie Massey, Gill Plumtree, Barbara Ryan,  
Ken Smith, Michael Spurgeon, Colin Thorne, John Warburton

#### **COS Committee**

**Chairperson/Business Manager-** Mark Fincham

**Vice Chairperson-** Ann Taylor

**Secretary-** Elizabeth Thorne

**Treasurer-** Alan Larner

**Membership Secretary-** Colin Thorne

#### **Members**

Katie Cutmore, Diane Emberton, Pat Prestney,  
Neil Somerville, Mike Spurgeon, Maggie Walton

#### **CO2 Committee**

**Chairperson-** Ann Taylor

**Vice Chairperson-** Charlotte Butcher

**Business Manager-** Mark Fincham

**Secretary-** Diane Emberton

**Treasurer-** Alan Larner

**Membership Secretary/Youth Liaison-**

Trevor Walton

#### **Members**

Ella D'Arcy-Jones, Tom Kiernan,  
Connor Pratchett, Mike Spurgeon

## ★ THE PRODUCTION TEAM ★

**NIKKI MUNDELL-POOLE** Director & Choreographer

Nikki was part of the original cast for CO2's *Grease* in 1984 and had many happy years performing with them and made life long friendships as a result.

After a period working with West End productions including *The Phantom of the Opera*, *Cats*, *Miss Saigon* and *Les Misérables*, Nikki started to work with many local societies. She has spent more than 20 years working as a Director and/or Choreographer and during that time has worked on over 40 musicals.

She was delighted to be asked to come back to work with CO2 as Director on such a challenging and emotional show but couldn't be happier to be teaming up again with two talented ladies she has worked with before - Emma and Leanne.

Carousel has many special memories for her and this is her fourth time directing it. However, this time working with a young and talented cast, who were initially unfamiliar with this classic musical, has been the most rewarding.

She would also like to remember with this production her own special 'Heavenly Friend', her late father Derek Massey who will be undoubtedly singing along to 'My Little Girl'.



Emma Nash, Nikki Mundell-Poole, Leanne Fincham

**EMMA NASH** Musical Director

Since graduating from Goldsmith's University of London with a Masters in Piano Performance, Emma is heavily involved in performing across Essex including many classical recitals and has been in the pit orchestra for over 30 productions.

Emma is a well respected soloist and accompanist and enjoys playing in a range of musical genres. She has had the opportunity to perform at the Royal Festival Hall in a keyboard ensemble and as soloist for two concertos with the St Botolph's Orchestra. Emma is also part of the Tanzanite Trio, performing recitals locally. Her most recent concerts include playing Grand Piano for Tubular Bells a tribute to Mike Oldfield which featured professional musicians from the original recording and The South Bank Show, Theme and Variations by Lloyd Webber at Colchester Institute.

In 2014, she made her debut as a Musical Director in Witham with 'WOW's production of *Grease*, also directed by Nikki, which won the Best Youth Musical award from NODA. The following year, she musically directed *Our House*, joint winner of the NETG Best Musical in 2015.

This is Emma's fourth production as a Musical Director and first for CO2 and she would like to thank the whole team, past and present, for this opportunity to continue her growth as a Musical Director. She would also like to thank her father who has continued to support and encourage her development as an MD. After months of working with such a talented young cast, it is an honour for Emma to be conducting them with an orchestra pit of such accomplished outstanding musicians. She hopes you enjoy tonight's show and you've packed tissues!

**LEANNE FINCHAM** Director's Assistant

Leanne's association with CO2 started as a performer, taking on many leading roles such as Anita in *West Side Story*, 1995. She has since gone on to be the director/choreographer's assistant for numerous shows for CO2 including, *West Side Story* in 2013 and *Grease* in 2014. Leanne is a trained dancer and specialises in ballet, modern, and tap. She has performed both nationally and locally, making regular appearances with COS, most recently taking on the role of Maggie Jones in *42nd Street*. She has really enjoyed being part of this classic musical and working with CO2 again.

**LIGHTING DESIGN**

Callum Macdonald

**STAGE MANAGER**

Terry Lyon

**SOUND DESIGN**

Martyn J Hunt

**WARDROBE MISTRESS**

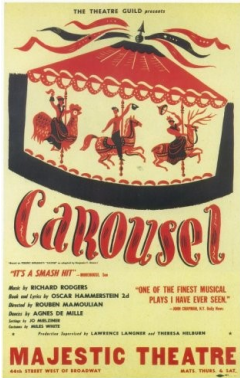
Charlotte Butcher

**PROPERTIES MANAGER**

Diane Emberton



## ★ HISTORY OF THE SHOW ★



The Theatre Guild started producing shows on Broadway in the 1920's and developed a knack for turning their classic plays into what have now become classic musicals. In 1921 they presented *Liliom* by the Hungarian playwright Ferenc Molnár which was incredibly successful. After producing *Porgy and Bess* (1935) and *Oklahoma!* (1943) they knew that there was potential with this play and with Rodgers and Hammerstein on board, Molnár approved.

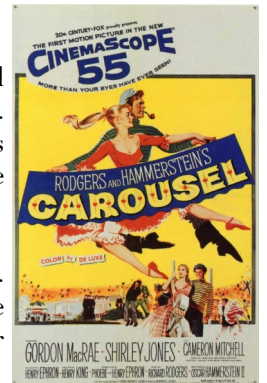
As World War Two raged on, the Hungarian setting did not sit comfortably with the Americans and eventually it was decided to relocate the story to 19th century New England.

The first song Rodgers and Hammerstein wrote was "Soliloquy", this mammoth eight minute solo gave character, emotion and a story to Billy Bigelow, a carousel barker which helped everything else fall into place. Using the same creative team as *Oklahoma!* and after trying out the show in New Haven and Boston it was in some ways unsurprising that after opening at

Broadway's Majestic Theatre on 19th April 1945 *Carousel* ran for a total of 890 performances.

In what would be the final year of World War Two the story of a young widow raising a child alone and the imagery used throughout the show touched all those who had lost a loved one. In particular "You'll Never Walk Alone" was very poignant and proved solace to many. This song stands in its own right and has been adopted by football fans and crowds looking to unite all over the world in times of celebration and tragedy.

In 1950 *Carousel* came to the Theatre Royal, Drury Lane, running for 566 performances. The motion picture was released in 1956 starring Gordon MacRae and Shirley Jones. There have since been hundreds of different theatre companies who have performed the show all over the world with revivals on both Broadway and in the West End proving incredibly successful.



## ★ THE CLAM BAKE ★

If you love shellfish then the clambake is for you! Early settlers in New England developed the practice of coastal Indians who steamed shellfish over hot stones and under a layer of seaweed.

To make a clambake in the traditional way then follow these simple steps:

- ◆ Dig a deep pit on the beach
- ◆ Line the bottom of the pit with stones
- ◆ Light a fire over the stones and allow to burn for several hours to fully heat them
- ◆ Brush off the ash and put a layer of wet seaweed over the stones
- ◆ Put in any ingredients e.g. clams, fish, lobsters, onions, potatoes, sweetcorn, carrots in layers with each layer separated by more seaweed
- ◆ Cover with a thick layer of wet seaweed and a wet canvas to keep the steam in
- ◆ Allow to cook for several hours
- ◆ Eat on the beach with family and friends



Alternatively, steam all the ingredients in a pot on the hob for about an hour and tuck in!

# ★ SCENES AND MUSICAL NUMBERS ★

## New England Coast 1873-1888

### ACT I

#### Scene 1 An Amusement Park on the New England Coast in May

Prologue (The Carousel Waltz)..... The Company

#### Scene 2 A Tree-Lined Path along the Shore – A few minutes later

Mister Snow..... Carrie and Julie

If I Loved You.... Billy and Julie

#### Scene 3 Nettie Fowler's Spa on the Oceanfront in June

June is Bustin' Out All Over.... Nettie, Carrie, Chorus

Encore: June is Bustin' Out All Over ...Nettie, Chorus

Reprise; Mister Snow.... Carrie, Enoch, Girls

When The Children Are Asleep... Enoch and Carrie

Blow High Blow Low... Jigger, Billy, Men

Soliloquy..... Billy

Finale Act I....Nettie, Company

### ACT II

#### Scene 1 Prelude – On an Island Across the Bay, that night

A Real Nice Clambake... Nettie, Julie, Carrie, Enoch, Chorus

Geraniums In The Winder.... Enoch

Stonecutters Cut It On Stone ... Jigger, Chorus

What's The Use Of Wond'rin?.... Julie, Girls

#### Scene 2 Mainland Waterfront. An hour later

You'll Never Walk Alone.. Julie and Nettie

The Highest Judge Of All ....Billy

#### Scene 3 Up there

#### Scene 4 Down Here on a Beach. Fifteen years later

Ballet... Louise, Carnival Boy, Enoch, Snow Children, Dancers

#### Scene 5 Outside Julie's Cottage

Reprise: If I Loved You...Billy

#### Scene 6 Outside a Schoolhouse, the same day.

Finale Ultimo.... The Company

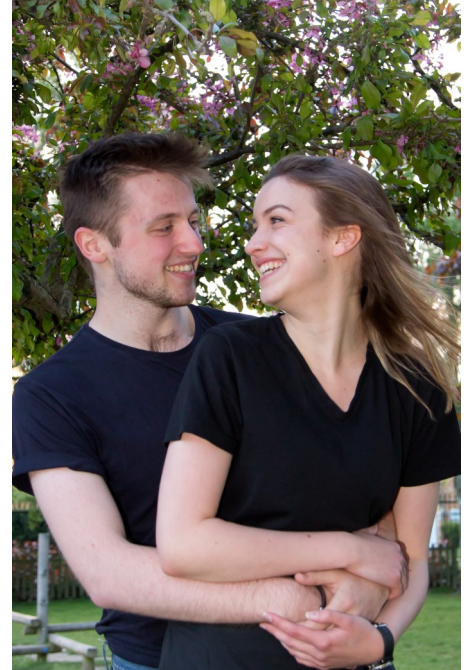




## ★ CAST BIOGRAPHIES ★

### JENNY COLLINS– *JULIE JORDAN*

This is Jenny's 3rd show with CO2, having last been seen as part of the ensemble in *Grease* in 2014. In 2013 she was Maria in *West Side Story*, for which she won the NODA award for Best Young Performer. As well as performing and helping backstage with the Operatic Society, she has performed in multiple productions at the Headgate Theatre, the most recent including *Assassins* as Lynette 'Squeaky' Fromme and *Sweeney Todd* as Johanna. Jenny has taken a year out of her studies to gain experience, and is starting a degree in Drama and Music at Royal Holloway University of London this September, with the ambition to perform professionally. She hopes you enjoy the show and wants to thank Colchester Operatic for making her time with the society so special.



### WILL MUGFORD– *BILLY BIGELOW*

Will made his CO2 debut in 2008 in *The Wiz*, and has appeared in every show since, most recently playing the roles of Warner in *Legally Blonde* and Danny in *Grease*. As well as this, he appeared in COS's recent production of *Sister Act* as Pablo. He is also heavily involved with Mad Hatter Productions where he has played varied roles such as George in *Of Mice and Men* and Aldolpho in *The Drowsy Chaperone*. He made his directing debut in February with Stephen Sondheim's *Assassins*. Will is planning on auditioning for drama school and is hoping to continue his love of theatre with further study. He is delighted to be performing in *Carousel* and to be playing a role that he absolutely loves.

### ELLA D'ARCY-JONES– *CARRIE PIPPERIDGE*

This is Ella's third appearance with CO2 after playing Margot in last year's production of *Legally Blonde* and prior to that being a chorus member in *Grease* in 2014. She is starting her second year at the Colchester Sixth Form College studying A2 Performance Studies, Spanish, English Literature and GCSE Italian; Ella is also planning on auditioning for various drama schools around the country with ambitions to study at Mountview Academy of Theatre Arts. She has been a member of the Mercury Drama group since she was 4 years old and enjoys composing songs on piano and guitar in her spare time. Ella is also a member of the local young company 'Mad Hatter' with whom she has performed in two concerts and was involved in their most recent performance of *Urinetown* earlier this year.



### CONNOR PRATCHETT– *JIGGER CRAIGIN*

*Carousel* is Connor's fifth show with CO2 after joining in 2012 for *Guys and Dolls*. Since then he has gone on to play Snowboy in *West Side Story*, Doody in *Grease* and Aaron Shultz in last year's production of *Legally Blonde*. In January of this year Connor moved over to COS and played the role of TJ in *Sister Act*, which is his favourite role to date. Other favourite roles of his include Leon Czolgosz in *Assassins*, Rod in *Avenue Q* and Emcee in *Cabaret*. Earlier this year Connor found out he had been accepted into drama school and has just begun the BA (Hons) in Professional Dance and Musical Theatre course at Bird College and commutes back for each performance.



## ★ CAST BIOGRAPHIES ★

**WADE ABLITT– *ENOCH SNOW***

This is Wade's fourth production with CO2 and he's so happy to be performing in one of his favourite shows. Other favourite roles that he has performed with a variety of local theatre groups include The Proprietor in *Assassins*, Firmin in *The Phantom of the Opera*, Professor Callahan in *Legally Blonde*, Simon in *Jesus Christ Superstar* and Nicely Nicely Johnson in *Guys and Dolls*. Wade is also a keen director, recently directing *Urinetown* and *The Drowsy Chaperone* for Mad Hatter Productions, as well as *A Midsummer Night's Dream* for which he also wrote the music and lyrics. He is currently working on several original musicals and continues his directorial work with Mad Hatter Productions and his own theatre company Wide Eye Productions.

**ELLIE TATE– *MRS MULLIN***

Ellie has now appeared in three productions with CO2 having previously played Vivienne in *Legally Blonde* and Rizzo in *Grease*. She has also performed with COS' production of *42nd Street* as Phyllis Dale. She also performs locally and appeared in Mad Hatter's production of *Assassins* and OD Production's version of *Rent*. Having just finished studying a two year musical theatre course at Colchester Institute she is planning on continuing her study and will be auditioning for London drama schools.

**EMILY BATE– *NETTIE FOWLER***

Emily is appearing in her second production with CO2, her first being *Legally Blonde*. She has also performed with other local companies such as Mad Hatter Productions where she was in *Assassins* and *Urinetown* and OD Productions in *Chorus Line*. She is about to go into her third year, studying Musical Theatre at Colchester Institute and hopes to continue studying with an MA at a drama school next year. She has really enjoyed rehearsals and hopes you enjoy the show!

**JOEL ELEY– *JIGGER CRAIGIN (15th & 16th September)***

Joel has been with CO2 for 3 years, starting with *Grease* where he played Vince Fontaine and then last year in *Legally Blonde*, playing Elle's Dad and Winthrop. He is thrilled that he finally has a chance to tackle a lead role with CO2 even if it is only for a couple of nights as Jigger! Although this is his last year he is able to perform with CO2 he hopes to continue acting and ideally make a career from it.

★ **THE COMPANY** ★



**Alanah Penwill**  
*Chorus*



**Alex Terry**  
*Mr Bascombe  
& Chorus*



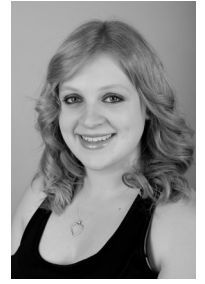
**Alfie de Brito**  
*Starkeeper/Dr Seldon  
& Chorus*



**Alfie Thomson**  
*Snow Child*



**Alice Molnar**  
*Louise  
& Chorus*



**Arianna Bland**  
*Heavenly Friend  
& Chorus*



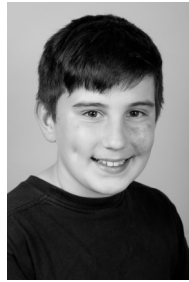
**Emily Lane**  
*Arminy  
& Chorus*



**Joel Eley**  
*Jigger Craigin  
(15th & 16th Sept)*



**Francesca Larkin**  
*Chorus*



**Fraser McLauchlan**  
*Snow Child  
& Chorus*



**Fred Walton**  
*Snow Child*



**Giulia Cipriani**  
*Chorus*



**Kassia Wall**  
*Chorus*



**Laura Ferneyhough**  
*Snow Child  
& Chorus*



**Leonie Wall**  
*Chorus*



**Lewis Eagland**  
*School Principal  
& Chorus*



**Lorna Perrin**  
*Louise Understudy  
& Chorus*



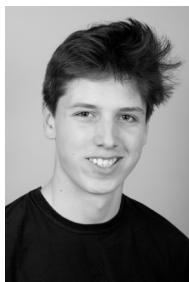
**Lorna Wheaton**  
*Chorus*



**Nathan Rigg**  
*Carnival Boy  
& Chorus*



**Paul Hodgson**  
*Policeman  
& Chorus*



**Rob Mercer**  
*Chorus*



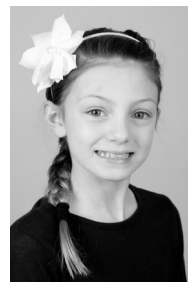
**Ruby Tewson**  
*Snow Child  
& Chorus*



**Scott Dingwall**  
*Chorus*



**Sebastian Eiden**  
*Snow Child*



**Victoria Walton**  
*Snow Child  
& Chorus*



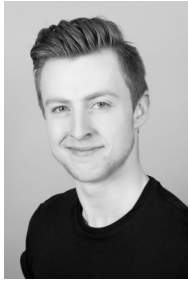
**Wade Ablitt**  
*Enoch Snow*



★ **THE COMPANY** ★



**Bethany Adamson**  
*Chorus*



**Connor Pratchett**  
*Jigger Craigin*



**Corey Moore**  
*Snow Child  
& Chorus*



**Ella D'Arcy-Jones**  
*Carrie Pipperidge*



**Ellie Tate**  
*Mrs Mullin*



**Emily Bate**  
*Nettie Fowler*



**Grace Fincham**  
*Snow Child  
& Chorus*



**Holly Felgate**  
*Chorus*



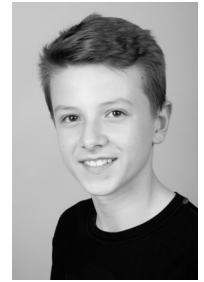
**Jake Daniels**  
*Enoch Snow Jnr  
& Chorus*



**Jasmine Triadi**  
*Chorus*



**Jenny Collins**  
*Julie Jordan*



**Joshua Tarrier**  
*Chorus*



**Mabel Hall**  
*Chorus*



**Martha Mugford**  
*Chorus*



**Megan Patmore**  
*Chorus*



**Millie Gould**  
*Chorus*



**Millie Watson**  
*Chorus*



**Nancy Borges-Wilby**  
*Chorus*



**Shannon Hannah**  
*Chorus*



**Shauna Thompson**  
*Chorus*



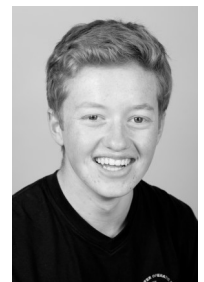
**Sofia Caselli**  
*Chorus*



**Sophie Ramsay**  
*Chorus*



**Tabetha Parrick**  
*Chorus*



**Tom Kiernan**  
*Captain  
& Chorus*



**Will Argent**  
*Chorus*



**Will Mugford**  
*Billy Bigelow*

# ★ COLCHESTER OPERATIC SOCIETY ★

## SECOND EDITION

### You'll Never Walk Alone

Colchester Operatic Society (COS) and Colchester Operatic Society Second Edition (CO2) has a special place in many peoples hearts. For those people who become members of the society or become involved in the productions the bond is even stronger, with many people making lifelong friends, meeting partners or being prepared to dedicate a substantial part of their life to the society.

Earlier this year we were parted with two wonderful people who were very close to the Society, Dani Fincham and Jim Bowman who we would like to dedicate this production to.

#### Dani Fincham– Director, Choreographer & Performer



Dani became involved with the Society in 1984 in the production of *Brigadoon*. She then was part of the original CO2 cast in their production of *Grease*. This started a long involvement with the society which she was passionate about, performing in many shows before taking on the challenge of directing *West Side Story* in 1995. In addition to directing many other productions with both COS and CO2 it was fitting then that Dani directed our 30th anniversary production of *Grease* two years ago. Dani was involved with many other theatre and dance companies, was highly supportive, encouraging young people to get involved. Many people she directed have since studied at drama schools and are incredibly thankful for the opportunities she gave them and the belief that she had in them.

#### Jim Bowman – Lighting Designer & Broadcaster



Jim trained at Royal Scottish Academy of Music & Drama. He then went on to work at the Harrogate Theatre, before traveling down south to work at the Wolsey Theatre, Ipswich as Deputy Chief Electrician under Geoff Spain. It was not long before (in 1984), Jim took up the post of Chief Electrician/Lighting Designer at the Mercury Theatre, Colchester - where he remained until 1997. Within his 13 years at the Mercury Jim lit every main house production - some of which are still talked about today! In 1997 Jim, looking for pastures new, decided to re-train to become a Driving Instructor - which he did for a number of years. It was in this time, that he also started to get the 'radio bug' and subsequently started to work for Hospital Radio Colchester. This then led to him to work for BBC Essex (where he also had his own radio show), before finally being offered a full time position as Station Sound Producer & "Trails bunny" at BBC Radio Suffolk. Luckily for COS & CO2, Jim also kept his hand in as a Lighting

Designer, and from 1997 onwards he continued to light shows for us. In fact, Jim lit every COS & CO2 production (bar 3) at the Mercury Theatre from 1984, before the lights went down in January 2015 on his last production which was '42nd Street'.

## ★ PAST SHOWS ★

1984 Grease	2002 Annie
1985 The Wiz	2003 42nd Street
1986 The Boyfriend	2004 Hot Mikado
1987 Bye Bye Birdie	2005 West Side Story
1988 West Side Story	2006 Godspell
1989 Godspell	2007 We Will Rock You
1990 Guys and Dolls	2008 Summer Holiday
1991 Grease	2009 The Wiz
1992 Anything Goes	2010 Footloose
1993 Annie	2011 Musical History Tour
1994 42nd Street	2012 Oklahoma!
1995 West Side Story	2012 Guys and Dolls
1996 Little Shop of Horrors	2013 West Side Story
1997 The Wiz	2014 Grease
1999 Rock Nativity	2015 Legally Blonde
2000 Fame	2016 Carousel
2001 Guys and Dolls	

## ★ THE COMPANY ★





# ★ ACKNOWLEDGEMENTS ★

Colchester Operatic Society Second Edition (CO2) would like to express their public thanks to all those who have contributed to this production through their help in the Green Room, Front of house and Back Stage. A special thanks to the Mercury Theatre Staff who have been fantastic as always.

Also thanks to Prettygate Junior School for providing our rehearsal venue.

Also thanks to anyone who has not been named but has helped with this production. Finally a special thank you to you, members of our audience, for all your support.

<b>Stage Manager</b>	Terry Lyon
<b>Deputy Stage Managers (on book)</b>	Philip Spurgeon & Lisa Elvish
<b>Stage Directors</b>	Alan Larnar, Mike Spurgeon,
<b>Stage Crew</b>	Matt Clarke, Ed Linley, Elaine Lloyd, Michael Mundell-Poole, Bob Neville, Sam Pilkington, Bob Wilkinson
<b>Lighting Operators</b>	Joshua Carr Kyle Watts
<b>Production Sound Engineer</b>	Graham Hounsell
<b>Number 1 Sound</b>	Marty Hunt
<b>Number 2 Sound</b>	Sophie Knights
<b>Sound Assistant</b>	Charlotte Butcher
<b>Wardrobe Mistress</b>	Charlotte Butcher
<b>Wardrobe Team</b>	Ann Taylor, Maggie Walton
<b>Costume Suppliers</b>	Dress Circle Witham, Witham Amateur Operatic Society
<b>Wigs and Makeup</b>	Members of COS & CO2
<b>Properties Manager</b>	Diane Emberton
<b>Props Team</b>	Becky Bacon, Calum Mundell-Poole, Becky Plant, Ann Taylor
<b>Props Suppliers</b>	Claire Morris, Ipswich Co-Op Juniors, Witham Amateur Operatic Society
<b>Set and Scenery Supplier</b>	Scenic Projects Ltd.
<b>Sound Equipment</b>	MJH Sound Design
<b>Prompts</b>	Gabby Fusi, Pat Prestney
<b>Voice Coach</b>	Barbara Pears
<b>Marketing</b>	Gabby Fusi, Pat Prestney, Sarah White, members of COS & CO2
<b>Poster and Programme Cover</b>	Ann Taylor
<b>Programme</b>	Charlotte Butcher
<b>Poster/Programme Printing</b>	Ed Oakes– Spingold Design and Print
<b>Photography</b>	Sally Parkinson
<b>Advertisement Banners</b>	NES Visual Thinking
<b>Front of House</b>	Trevor Walton, members of COS & CO2
<b>Green Room</b>	Katie Cutmore, members of COS & CO2
<b>Head Chaperone</b>	Trevor Walton
<b>Chaperones</b>	Maeve Borges, Diane Emberton, Elaine Lloyd, Sarah Lloyd, Colin McLauchlan, Sue McLauchlan, Wendy Ramsay, Ann Taylor, Maggie Walton

# ★ THE ORCHESTRA ★

**Musical Director**  
**Orchestral Manager**

Emma Nash  
Neil Somerville

**Keys:** Daniel Law, **Violins:** Kelly Jones, Megan Hill, **Cello:** Chris Slatter, **Bass:** Felix Bartle,  
**Flute/Alto Flute:** Jo Arber, **Oboe/Cor Anglais:** Janet Brook, **Bassoon:** Lynda Blackburn,  
**Trumpets:** John Jermy, Nick Bailey, **Horn:** Kay Dawson, **Trombone:** Shaun Ballisat,  
**Percussion:** Andy Dowding

**COLCHESTER OPERATIC SOCIETY**

**JANUARY 18th -28th 2017**

**MERCURY THEATRE**

*Jekyll & HYDE*  
The Musical

Conceived for the stage by  
Steve Cuden & Frank Wildhorn

Book and Lyrics by Leslie Bricusse

Music by Frank Wildhorn

Orchestrations by Kim Scharnberg

Arrangements by Jason Howland

This amateur productions is presented by arrangement with  
JOSEF WEINBERGER LIMITED  
on behalf of MUSIC THEATRE INTERNATIONAL of New York

**WWW.MERCURYTHEATRE.CO.UK 01206 573 948**  
**[www.colchesteroperaticsociety.co.uk](http://www.colchesteroperaticsociety.co.uk)**





Christmas Lighting



Flags & Banners



Marquees



Windsocks

## Contact us



[www.piggotts.co.uk](http://www.piggotts.co.uk)



46 Stepfield Witham



01376 535750



[sales@piggotts.co.uk](mailto:sales@piggotts.co.uk)



***This year we celebrate 80 years of fine food***

home cooked gammon ham  
stockists of local produce  
baskets & gifts

hand roasted coffees  
forty different teas  
supplier of artisan cheeses

***Colchester's Specialist Grocer***

81-83 Crouch Street, Colchester, Essex, CO3 3EZ

Tel: 01206 572200

@HGuntonLtd

Email: [info@gunttons.co.uk](mailto:info@gunttons.co.uk)

[www.gunttons.co.uk](http://www.gunttons.co.uk)



**JEANNEAU**

**New & Used Boats • Workshop & Servicing  
Marine & Clothing Superstore • Moorings**

**Open 7 days a week - 9:00am to 5:30pm**

**Free car parking**



**morgan marine**

Brightlingsea Boatyard, CO7 0AR

[www.morganmarine.com](http://www.morganmarine.com)

01206 302 003

# Apogee

Creative Print Solutions

**\*Apogee: noun, apo-gee**

*the highest point of something*



## Clothing

Screen printing • Transfers • DTG (Direct to garment)  
Dye-Sub • Design service...



## Signage

Signage • Flat-cut Lettering • Light boxes • Window Graphics,  
Point of sale • Hoardings • Health & Safety Signs...



## Interiors

Digital Printing • Wallpapers • Canvases • Acrylic Artwork,  
Glass Manifestations • Bespoke Projects...



## Vehicles

Vehicle Livery • Vehicle Wrapping  
Window Tinting • Design...



## Displays

Posters • Banners • Promotional Stationary • Exhibition Graphics  
Roller Banners • Business Cards • Logo Design...

**01787 224400**

[www.apogeeprint.com](http://www.apogeeprint.com)

[info@apogeeprint.com](mailto:info@apogeeprint.com)





# HATFIELDS

*What's The Use Of Word 'in'?*

*Visit Hatfields for yourself to see  
the quality and choice we offer!*

*Established 1886*



**QUALITY HOME FURNISHINGS**  
INDOORS OR OUTDOORS WE'VE GOT IT COVERED!



**Hatfields**  
HOME FURNISHERS

Peartree Road, Stanway, Colchester, Essex CO3 0LA  
**01206 765444 [www.hatfields.com](http://www.hatfields.com)**

